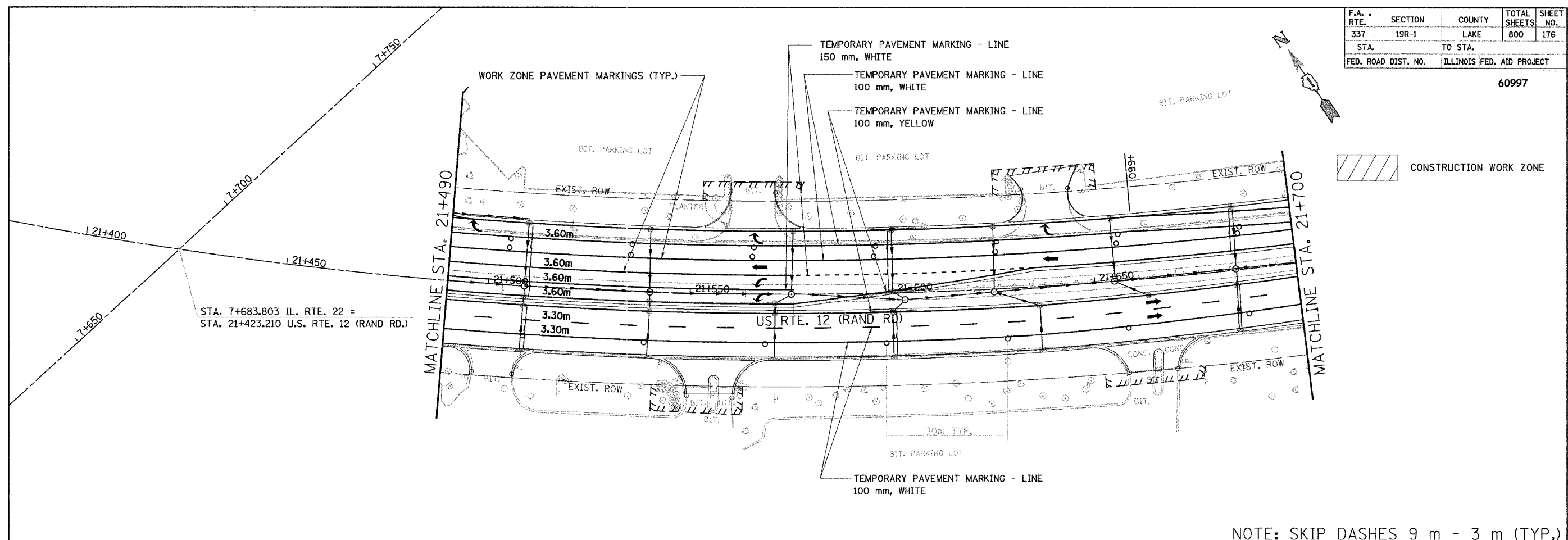


F.A. RTE.	SECTION	COUNTY	TOTAL SHEETS	SHEET NO.
337	19R-1	LAKE	800	176
STA.	TO STA.			
FED. ROAD DIST. NO.	ILLINOIS FED. AID PROJECT			

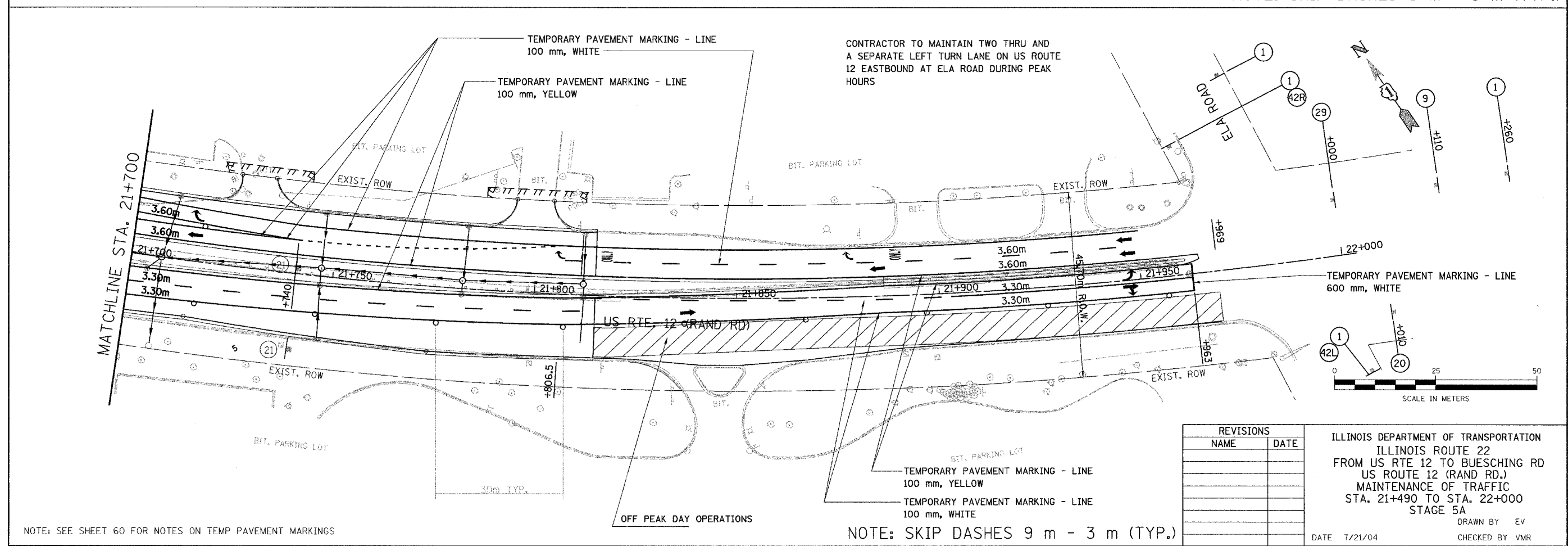
60997



STA. 7+683.803 IL. RTE. 22 =  
STA. 21+423.210 U.S. RTE. 12 (RAND RD.)

CONSTRUCTION WORK ZONE

NOTE: SKIP DASHES 9 m - 3 m (TYP.)



CONTRACTOR TO MAINTAIN TWO THRU AND A SEPARATE LEFT TURN LANE ON US ROUTE 12 EASTBOUND AT ELA ROAD DURING PEAK HOURS

OFF PEAK DAY OPERATIONS

NOTE: SKIP DASHES 9 m - 3 m (TYP.)

NOTE: SEE SHEET 60 FOR NOTES ON TEMP PAVEMENT MARKINGS

REVISIONS	
NAME	DATE

ILLINOIS DEPARTMENT OF TRANSPORTATION  
ILLINOIS ROUTE 22  
FROM US RTE 12 TO BUESCHING RD  
US ROUTE 12 (RAND RD.)  
MAINTENANCE OF TRAFFIC  
STA. 21+490 TO STA. 22+000  
STAGE 5A  
DRAWN BY EV  
CHECKED BY VMR  
DATE 7/21/04