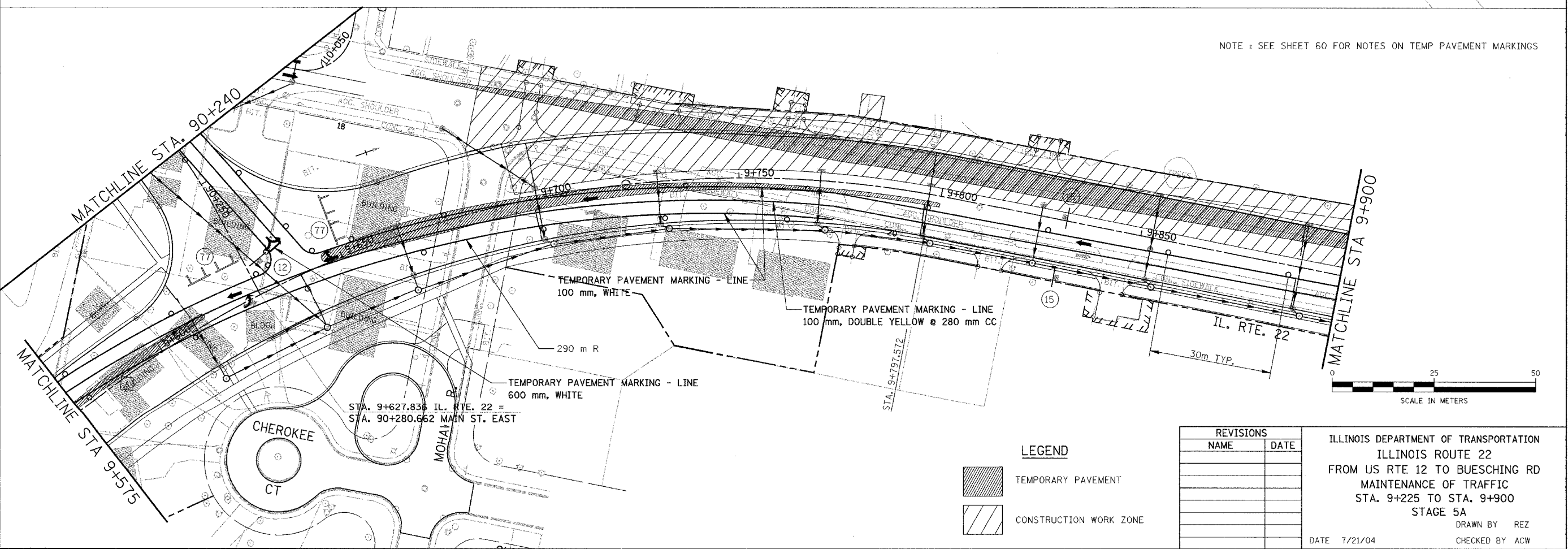
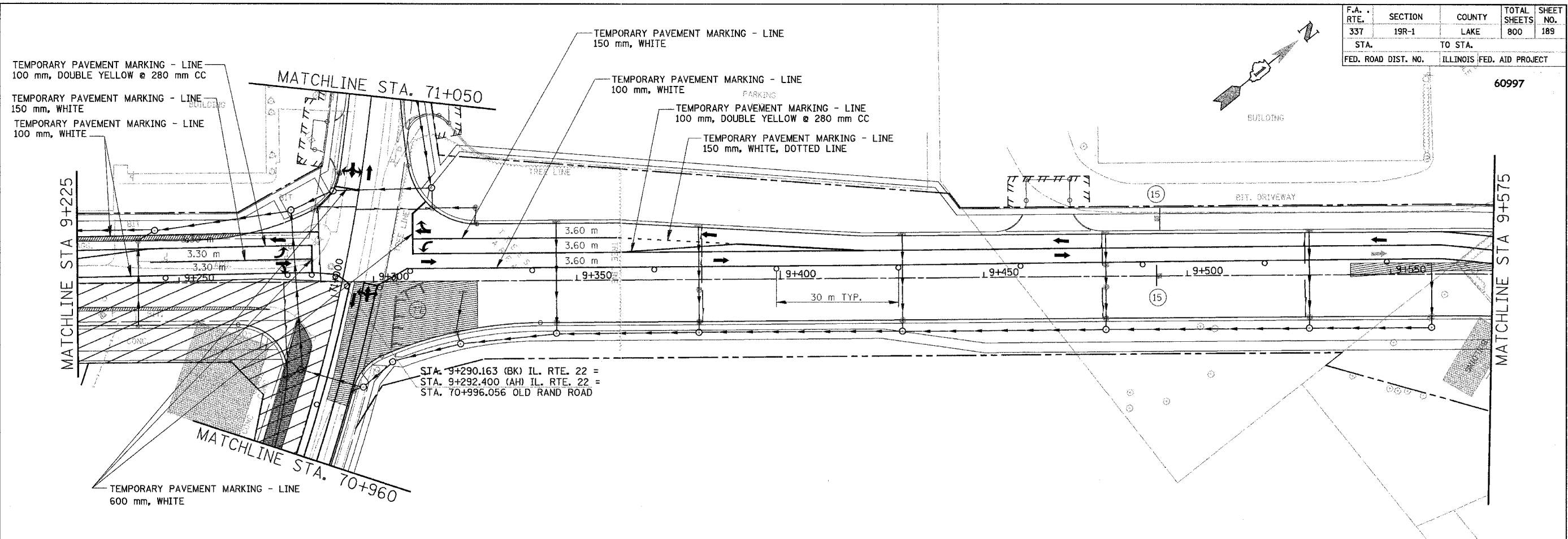
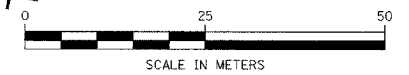


F.A. RTE.	SECTION	COUNTY	TOTAL SHEETS	SHEET NO.
337	19R-1	LAKE	800	189
STA.	TO STA.			
FED. ROAD DIST. NO.	ILLINOIS FED. AID PROJECT			

60997



NOTE : SEE SHEET 60 FOR NOTES ON TEMP PAVEMENT MARKINGS



LEGEND

	TEMPORARY PAVEMENT
	CONSTRUCTION WORK ZONE

REVISIONS	
NAME	DATE

ILLINOIS DEPARTMENT OF TRANSPORTATION
 ILLINOIS ROUTE 22
 FROM US RTE 12 TO BUESCHING RD
 MAINTENANCE OF TRAFFIC
 STA. 9+225 TO STA. 9+900
 STAGE 5A
 DRAWN BY REZ
 CHECKED BY ACW
 DATE 7/21/04