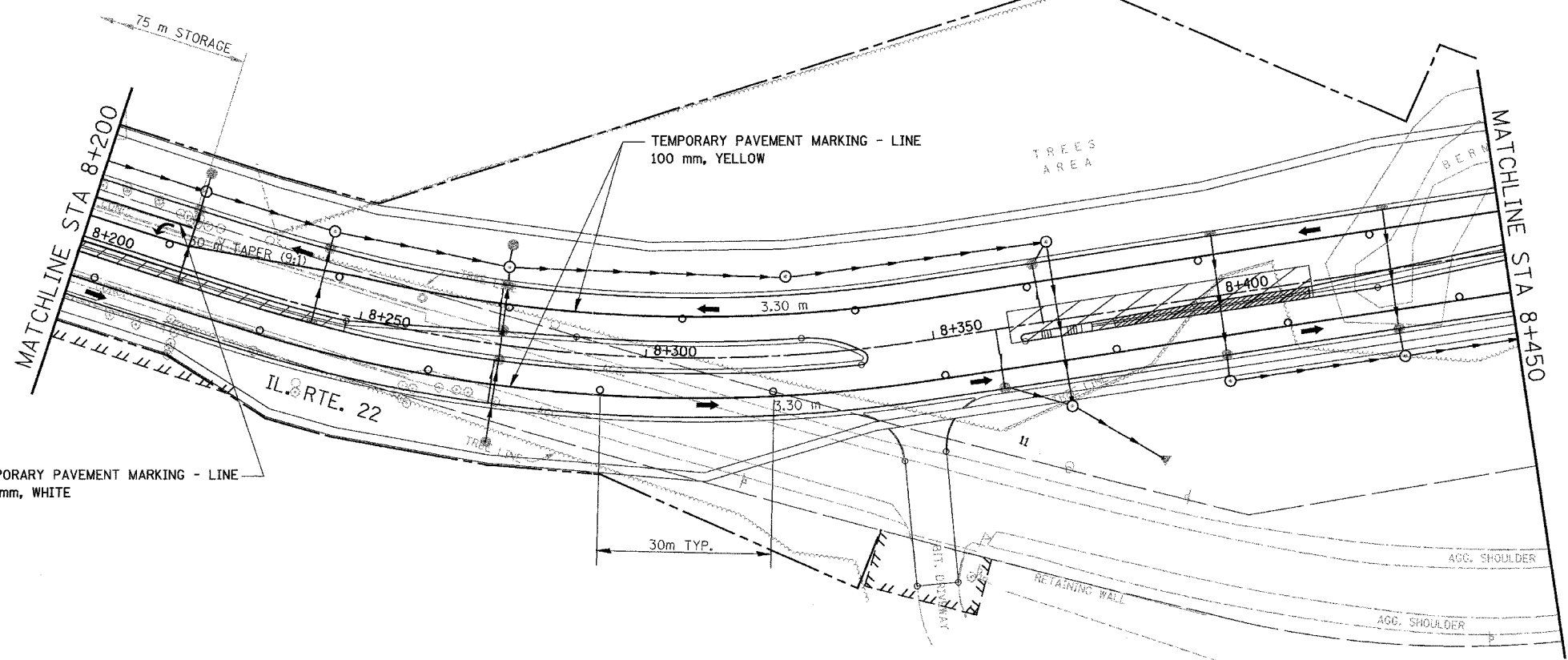
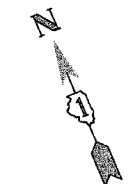


F.A. RTE.	SECTION	COUNTY	TOTAL SHEETS	SHEET NO.
337	19R-1	LAKE	800	204
STA.		TO STA.		
FED. ROAD DIST. NO.		ILLINOIS FED. AID PROJECT		

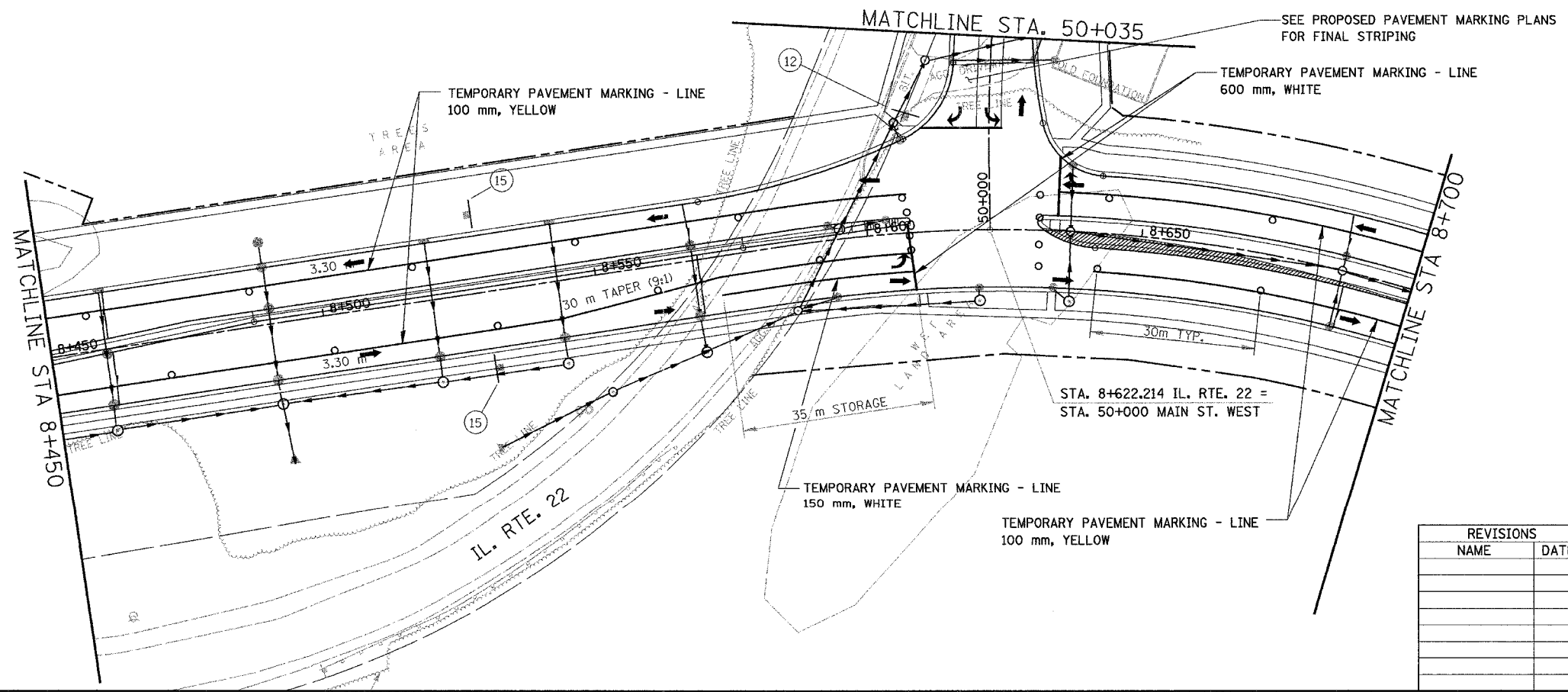
60997



TEMPORARY PAVEMENT MARKING - LINE
150 mm, WHITE

TEMPORARY PAVEMENT MARKING - LINE
100 mm, YELLOW

NOTE: SEE SHEET 60 FOR NOTES ON TEMP PAVEMENT MARKINGS



SEE PROPOSED PAVEMENT MARKING PLANS
FOR FINAL STRIPING

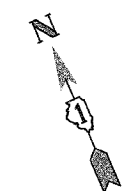
TEMPORARY PAVEMENT MARKING - LINE
600 mm, WHITE

TEMPORARY PAVEMENT MARKING - LINE
100 mm, YELLOW

STA. 8+622.214 IL. RTE. 22 =
STA. 50+000 MAIN ST. WEST

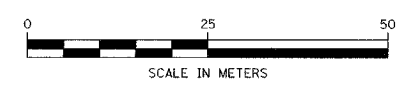
TEMPORARY PAVEMENT MARKING - LINE
150 mm, WHITE

TEMPORARY PAVEMENT MARKING - LINE
100 mm, YELLOW



LEGEND

- TEMPORARY PAVEMENT
- CONSTRUCTION WORK ZONE



REVISIONS	
NAME	DATE

ILLINOIS DEPARTMENT OF TRANSPORTATION
ILLINOIS ROUTE 22
FROM US RTE 12 TO BUESCHING RD
MAINTENANCE OF TRAFFIC
STA. 8+200 TO STA. 8+700
STAGE 6A & 6B
DRAWN BY DCS
CHECKED BY SMK
DATE 7/21/04