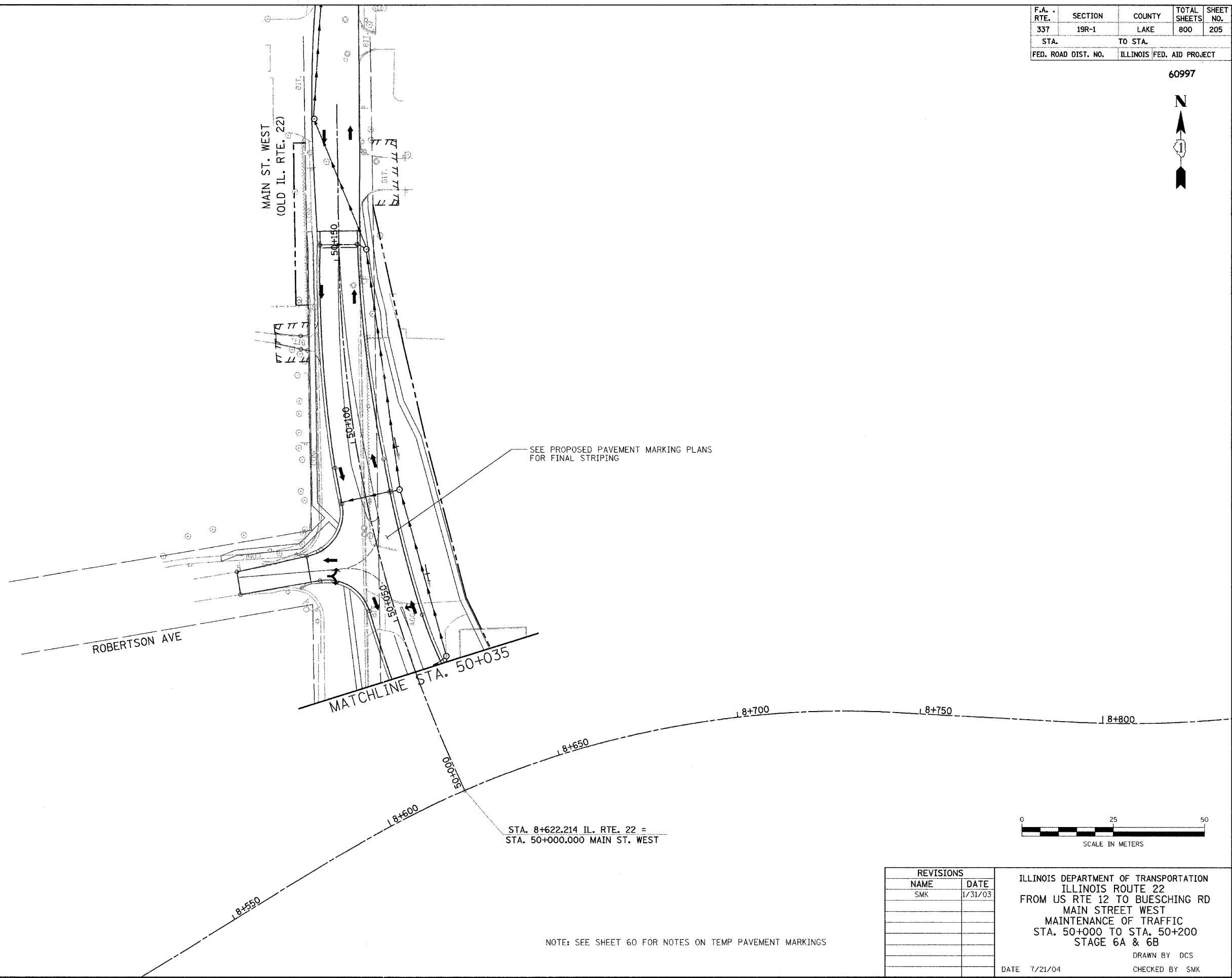


F.A. RTE.	SECTION	COUNTY	TOTAL SHEETS	SHEET NO.
337	19R-1	LAKE	800	205
STA.		TO STA.		
FED. ROAD DIST. NO.		ILLINOIS FED. AID PROJECT		

60997



STA. 8+622.214 IL. RTE. 22 =  
STA. 50+000.000 MAIN ST. WEST

NOTE: SEE SHEET 60 FOR NOTES ON TEMP PAVEMENT MARKINGS

REVISIONS	
NAME	DATE
SMK	1/31/03

ILLINOIS DEPARTMENT OF TRANSPORTATION  
ILLINOIS ROUTE 22  
FROM US RTE 12 TO BUESCHING RD  
MAIN STREET WEST  
MAINTENANCE OF TRAFFIC  
STA. 50+000 TO STA. 50+200  
STAGE 6A & 6B  
DRAWN BY DCS  
DATE 7/21/04  
CHECKED BY SMK