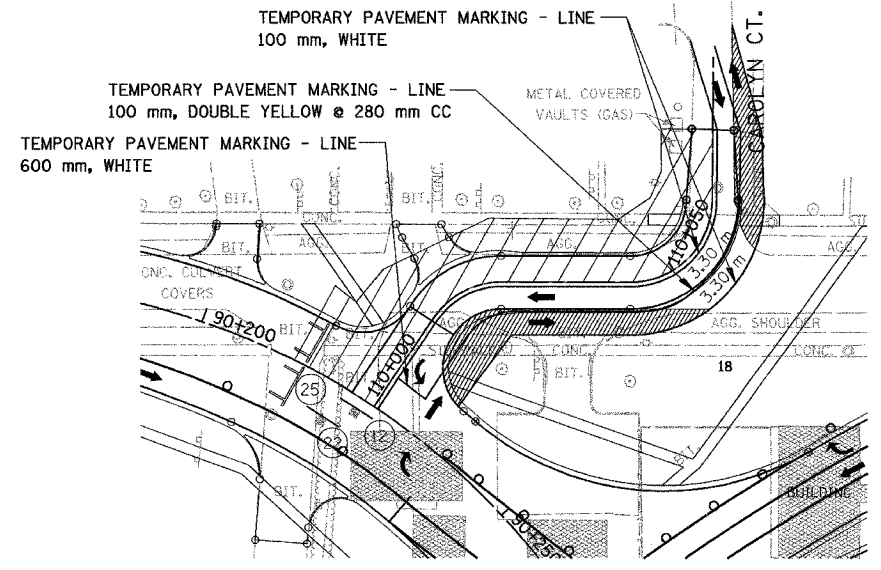
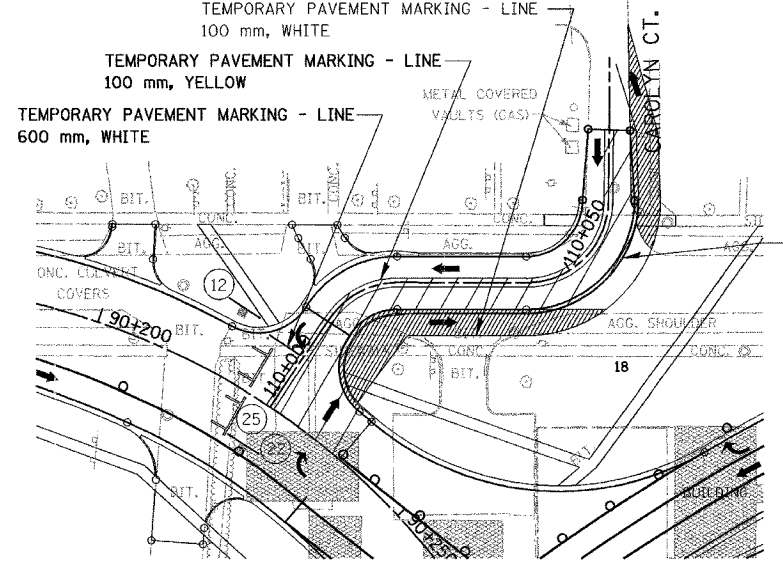


F.A. RTE.	SECTION	COUNTY	TOTAL SHEETS	SHEET NO.
337	19R-1	LAKE	800	212
STA.		TO STA.		
FED. ROAD DIST. NO.		ILLINOIS FED. AID PROJECT		

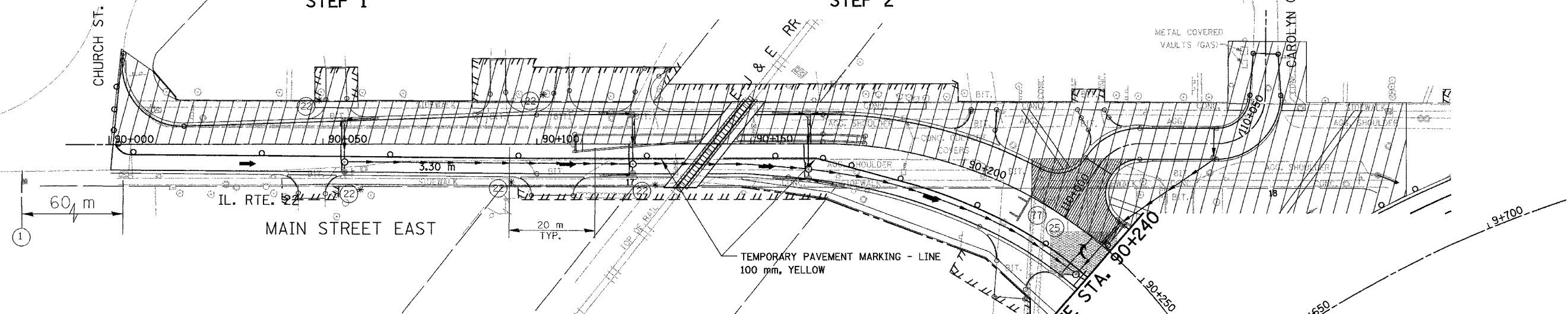
60997



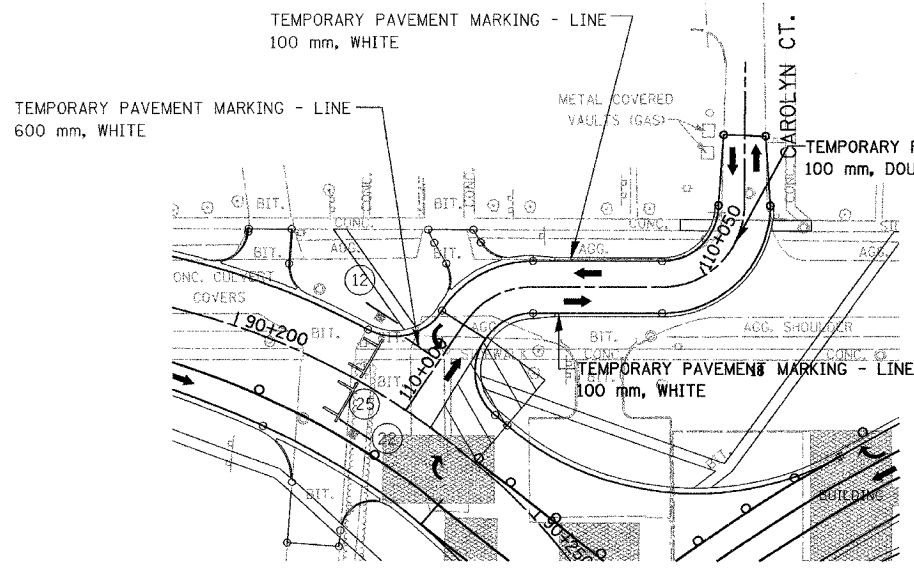
STEP 1



STEP 2



* TYPICAL EACH ENTRANCE LT OR RT(TYP.)



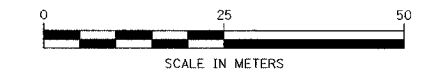
STEP 3

NOTE : SEE SHEET 60 FOR NOTES ON TEMP PAVEMENT MARKINGS

LEGEND

	TEMPORARY PAVEMENT
	CONSTRUCTION WORK ZONE

REVISIONS	
NAME	DATE



ILLINOIS DEPARTMENT OF TRANSPORTATION
 ILLINOIS ROUTE 22
 FROM US RTE 12 TO BUESCHING RD
 MAIN ST. EAST-MOHAWK TRAIL
 MAINTENANCE OF TRAFFIC
 STA. 90+000 TO STA. 90+240
 STAGE 6B
 DRAWN BY REZ
 CHECKED BY ACW
 DATE 7/21/04