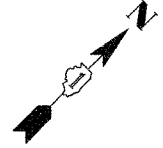


F.A. RTE.	SECTION	COUNTY	TOTAL SHEETS	SHEET NO.
337	19R-1	LAKE	800	229
STA.		TO STA.		
FED. ROAD DIST. NO.		ILLINOIS FED. AID PROJECT		

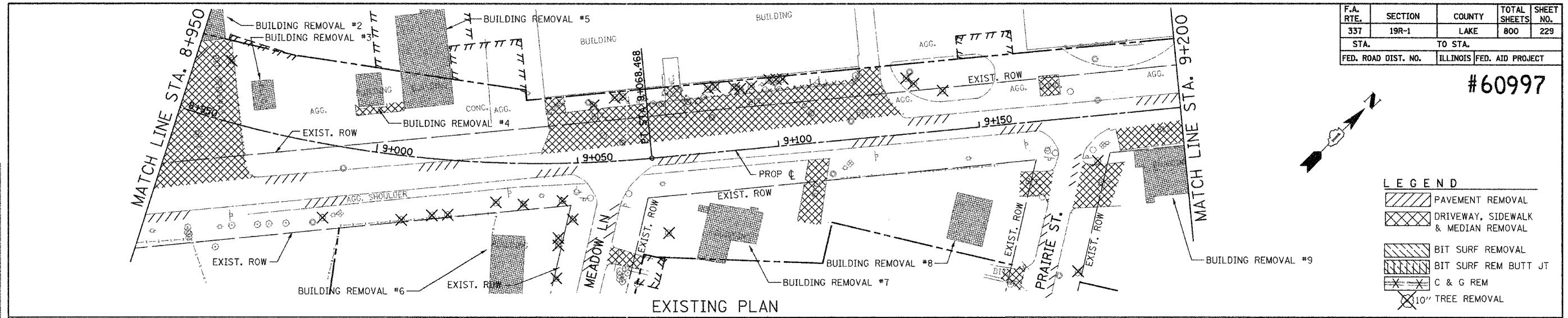
#60997



LEGEND

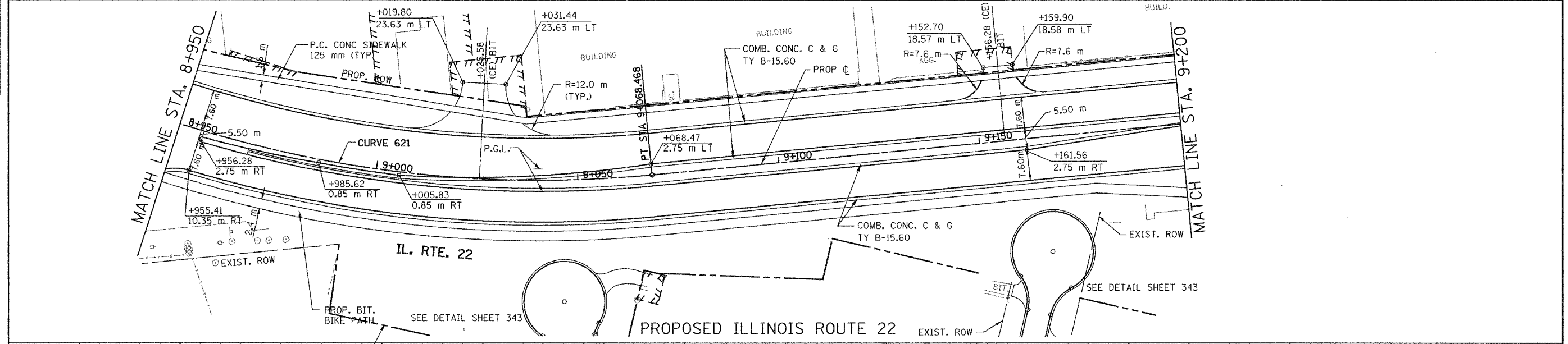
- PAVEMENT REMOVAL
- DRIVEWAY, SIDEWALK & MEDIAN REMOVAL
- BIT SURF REMOVAL
- BIT SURF REM BUTT JT
- C & G REM
- 10" TREE REMOVAL

FINAL SURVEY PLOTTED	BY	DATE
NOTE BOOK TEMPLATE		
AREAS CHECKED		
NO.		

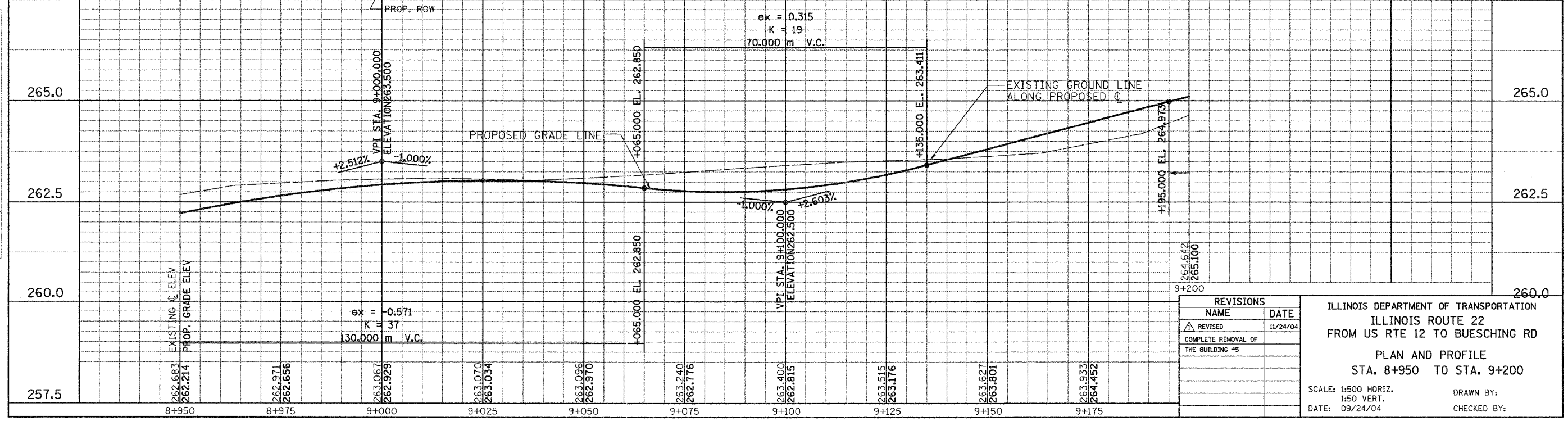


EXISTING PLAN

ORIGINAL SURVEY PLOTTED	BY	DATE
NOTE BOOK TEMPLATE		
AREAS CHECKED		
NO.		



PROPOSED ILLINOIS ROUTE 22



REVISIONS

NAME	DATE
REVISOR	11/24/04
COMPLETE REMOVAL OF THE BUILDING #5	

ILLINOIS DEPARTMENT OF TRANSPORTATION
 ILLINOIS ROUTE 22
 FROM US RTE 12 TO BUESCHING RD
 PLAN AND PROFILE
 STA. 8+950 TO STA. 9+200

SCALE: 1:500 HORIZ.
 1:50 VERT.
 DATE: 09/24/04

DRAWN BY:
 CHECKED BY: