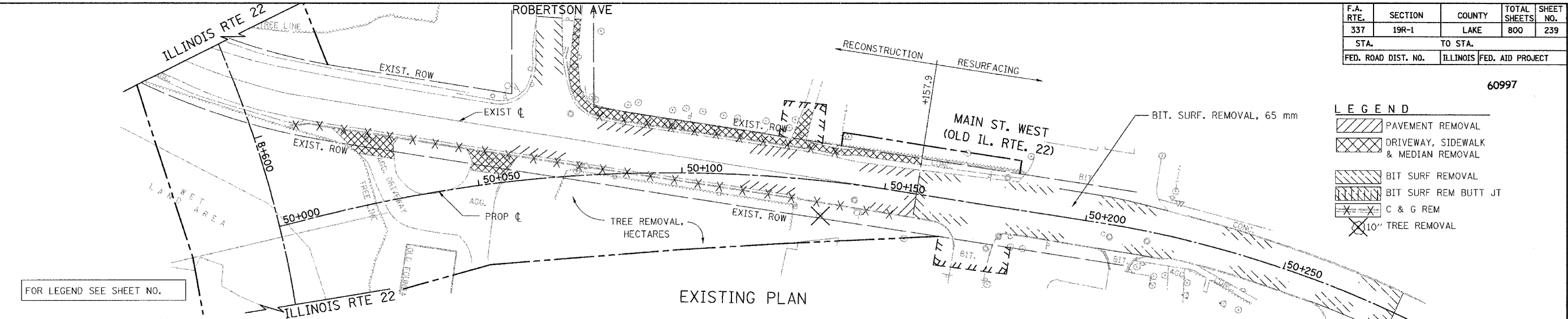


F.A. RTE.	SECTION	COUNTY	TOTAL SHEETS	SHEET NO.
337	19R-1	LAKE	800	239
STA.		TO STA.		
FED. ROAD DIST. NO.		ILLINOIS FED. AID PROJECT		

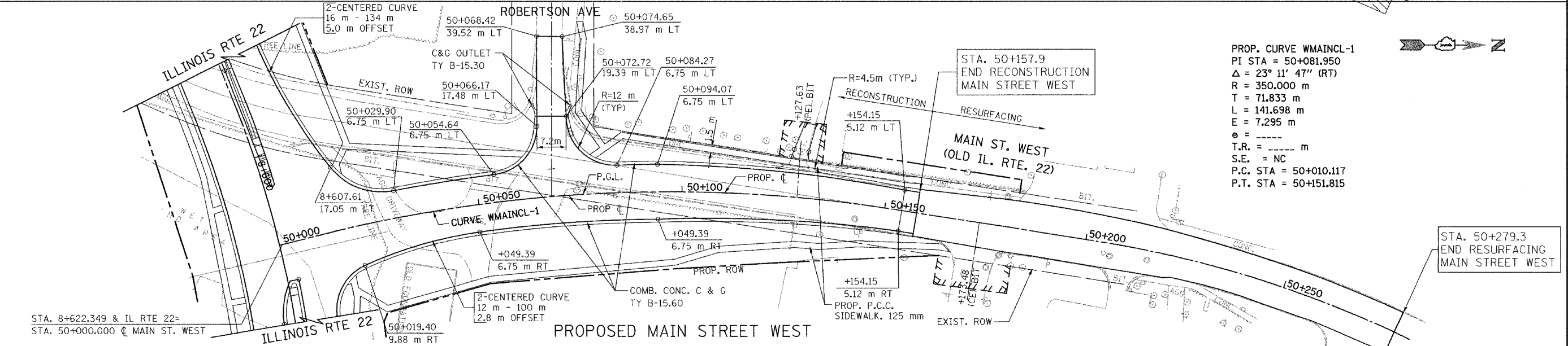
60997

LEGEND

- PAVEMENT REMOVAL
- DRIVEWAY, SIDEWALK & MEDIAN REMOVAL
- BIT SURF REMOVAL
- BIT SURF REM BUTT JT
- C & G REM
- 10" TREE REMOVAL



FOR LEGEND SEE SHEET NO.



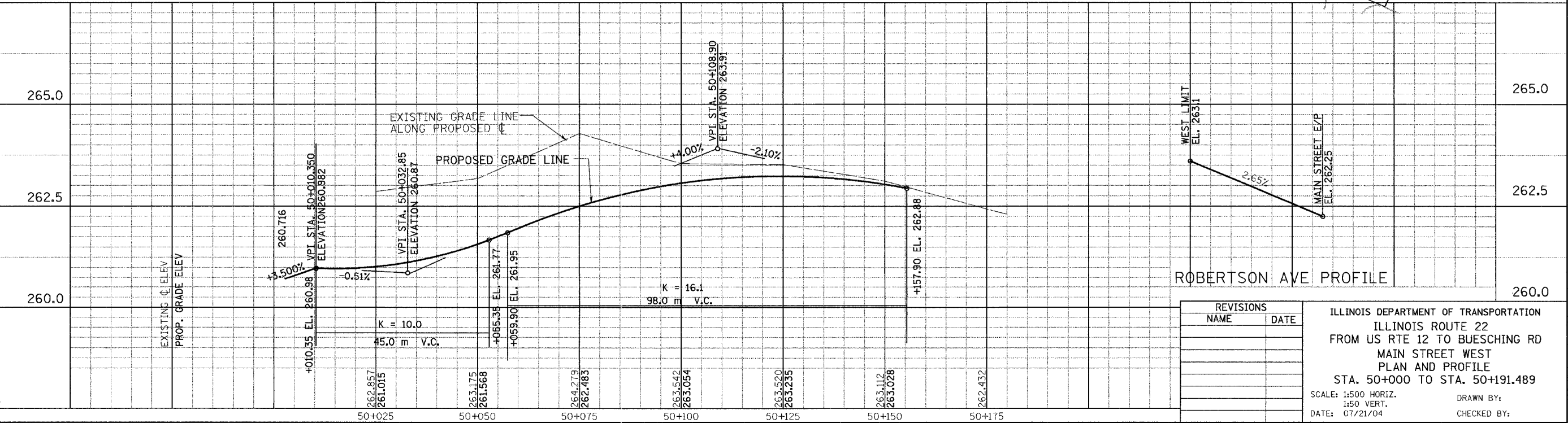
PROP. CURVE WMAINCL-1
 PI STA = 50+081.950
 $\Delta = 23^\circ 11' 47''$ (RT)
 R = 350.000 m
 T = 71.833 m
 L = 141.698 m
 E = 7.295 m
 $e =$ ----- m
 T.R. = ----- m
 S.E. = NC
 P.C. STA = 50+010.117
 P.T. STA = 50+151.815

STA. 50+279.3
 END RESURFACING
 MAIN STREET WEST

STA. 8+622.349 & IL RTE 22=
 STA. 50+000.000 ϕ MAIN ST. WEST

DATE	BY
DATE	BY
DATE	BY

DATE	BY
DATE	BY
DATE	BY



REVISIONS	
NAME	DATE

ILLINOIS DEPARTMENT OF TRANSPORTATION
 ILLINOIS ROUTE 22
 FROM US RTE 12 TO BUESCHING RD
 MAIN STREET WEST
 PLAN AND PROFILE
 STA. 50+000 TO STA. 50+191.489

SCALE: 1:500 HORIZ.
 1:50 VERT.
 DATE: 07/21/04

DRAWN BY:
 CHECKED BY: