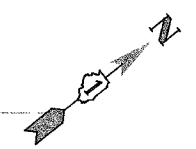


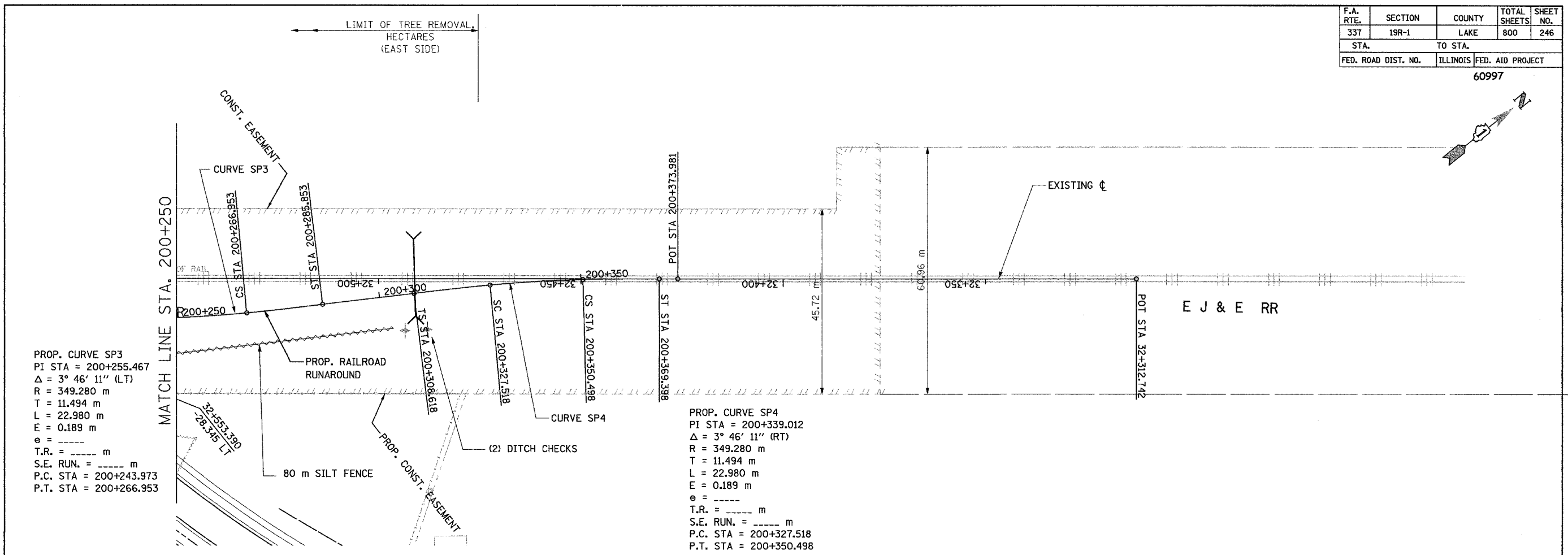
F.A. RTE.	SECTION	COUNTY	TOTAL SHEETS	SHEET NO.
337	19R-1	LAKE	800	246
STA.		TO STA.		
FED. ROAD DIST. NO.		ILLINOIS FED. AID PROJECT		
60997				



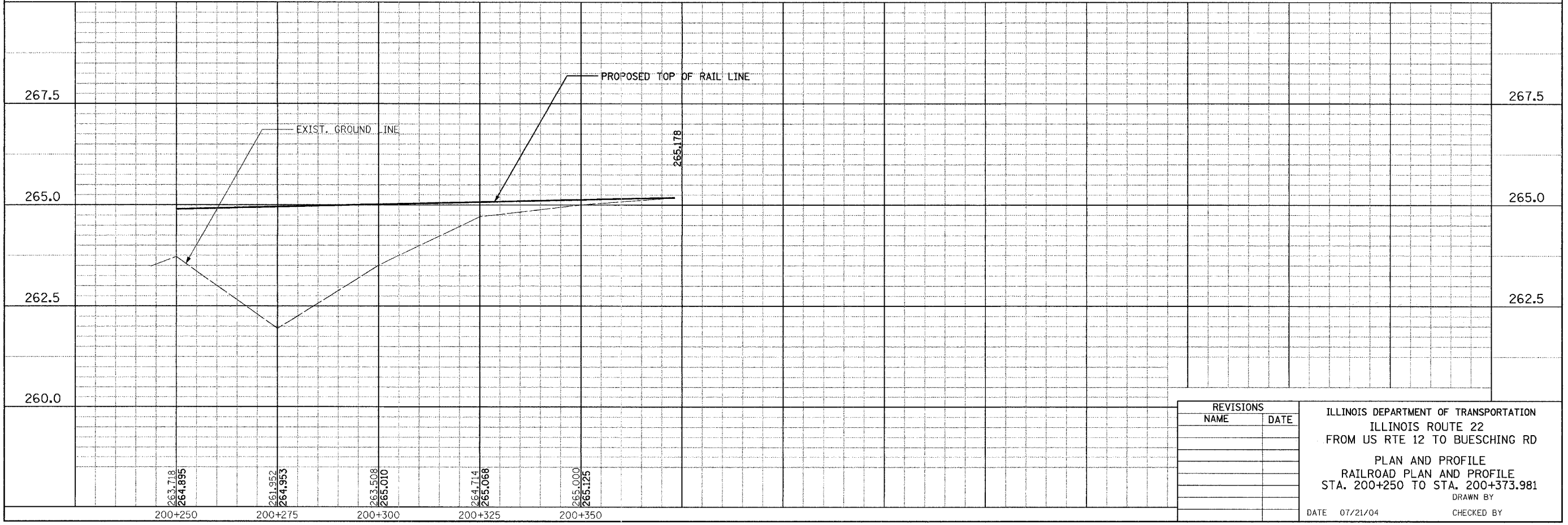
BY	DATE
FINAL SURVEYED	
SURVEY PLOTTED	
NOTE BOOK TEMPLATE	
AREAS CHECKED	
NO.	

PROP. CURVE SP3  
 PI STA = 200+255.467  
 $\Delta = 3^\circ 46' 11''$  (LT)  
 R = 349.280 m  
 T = 11.494 m  
 L = 22.980 m  
 E = 0.189 m  
 e = -----  
 T.R. = ----- m  
 S.E. RUN. = ----- m  
 P.C. STA = 200+243.973  
 P.T. STA = 200+266.953

PROP. CURVE SP4  
 PI STA = 200+339.012  
 $\Delta = 3^\circ 46' 11''$  (RT)  
 R = 349.280 m  
 T = 11.494 m  
 L = 22.980 m  
 E = 0.189 m  
 e = -----  
 T.R. = ----- m  
 S.E. RUN. = ----- m  
 P.C. STA = 200+327.518  
 P.T. STA = 200+350.498



BY	DATE
ORIGINAL SURVEYED	
SURVEY PLOTTED	
NOTE BOOK TEMPLATE	
AREAS CHECKED	
NO.	



REVISIONS	
NAME	DATE

ILLINOIS DEPARTMENT OF TRANSPORTATION  
 ILLINOIS ROUTE 22  
 FROM US RTE 12 TO BUESCHING RD  
 PLAN AND PROFILE  
 RAILROAD PLAN AND PROFILE  
 STA. 200+250 TO STA. 200+373.981  
 DRAWN BY  
 DATE 01/21/04  
 CHECKED BY