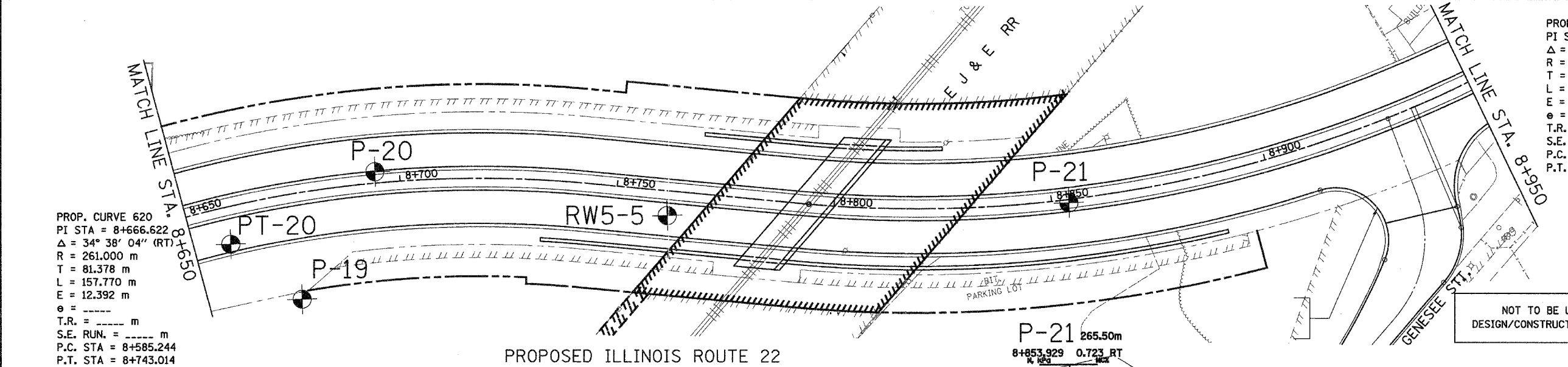
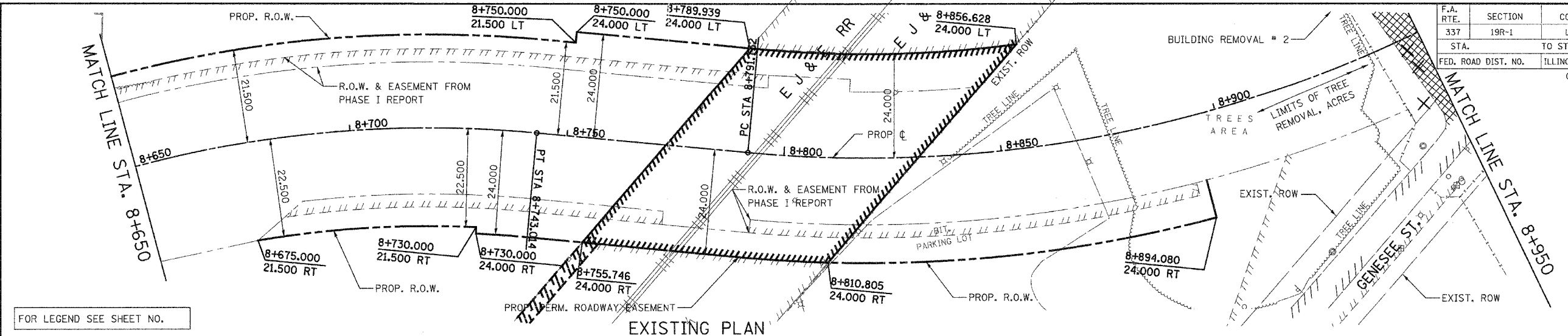


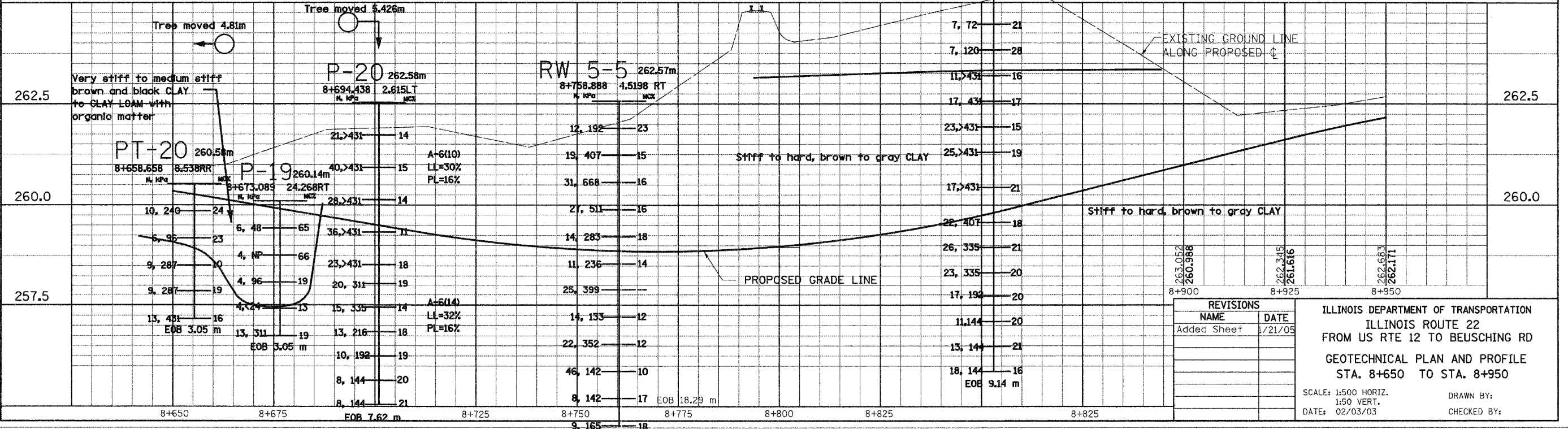
F.A. RTE.	SECTION	COUNTY	TOTAL SHEETS	SHEET NO.
337	19R-1	LAKE	800	2461
STA.		TO STA.		
FED. ROAD DIST. NO.		ILLINOIS FED. AID PROJECT		
CONTRACT NO. 60997				



PROP. CURVE 621
 PI STA = 8+666.622
 $\Delta = 34^\circ 38' 04''$ (RT)
 R = 261.000 m
 T = 81.378 m
 L = 157.770 m
 E = 12.392 m
 e = -----
 T.R. = ----- m
 S.E. RUN. = ----- m
 P.C. STA = 8+585.244
 P.T. STA = 8+743.014

PROP. CURVE 621
 PI STA = 8+941.561
 $\Delta = 54^\circ 28' 34''$ (LT)
 R = 291.060 m
 T = 149.829 m
 L = 276.737 m
 E = 36.300 m
 e = -----
 T.R. = ----- m
 S.E. RUN. = ----- m
 P.C. STA = 8+791.732
 P.T. STA = 9+068.468

NOT TO BE USED FOR DESIGN/CONSTRUCTION PURPOSES



REVISIONS	
NAME	DATE
Added Sheet	1/21/05

ILLINOIS DEPARTMENT OF TRANSPORTATION
 ILLINOIS ROUTE 22
 FROM US RTE 12 TO BEUSCHING RD
 GEOTECHNICAL PLAN AND PROFILE
 STA. 8+650 TO STA. 8+950

SCALE: 1:500 HORIZ.
 1:50 VERT.
 DATE: 02/03/03

DRAWN BY:
 CHECKED BY:

FINAL SURVEY	BY	DATE
SURVEYED		
PLOTTED		
NOTE BOOK		
TEMPLATE		
AREAS CHECKED		
NO.		

ORIGINAL SURVEY	BY	DATE
SURVEYED		
PLOTTED		
NOTE BOOK		
TEMPLATE		
AREAS CHECKED		
NO.		

FOR LEGEND SEE SHEET NO.