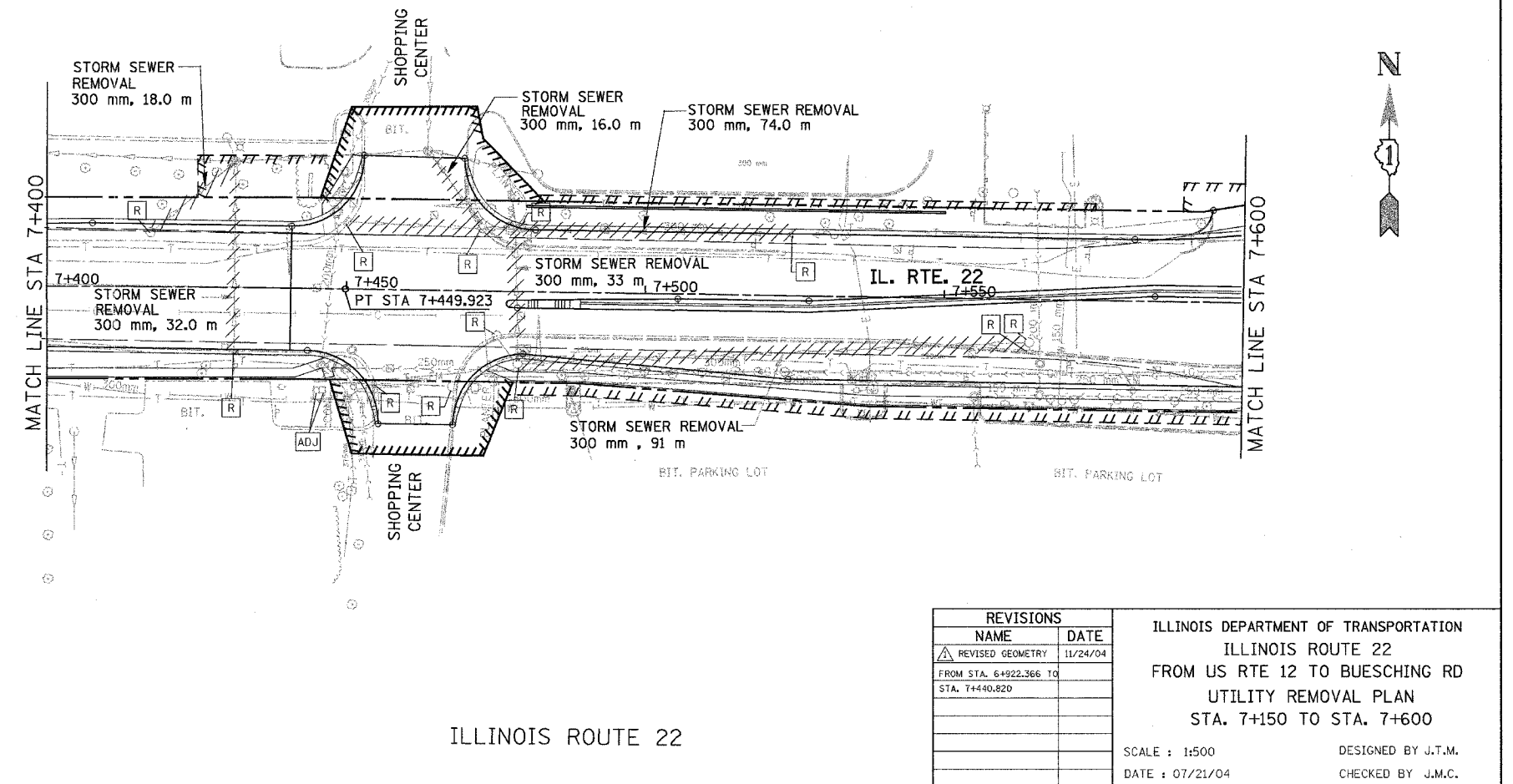
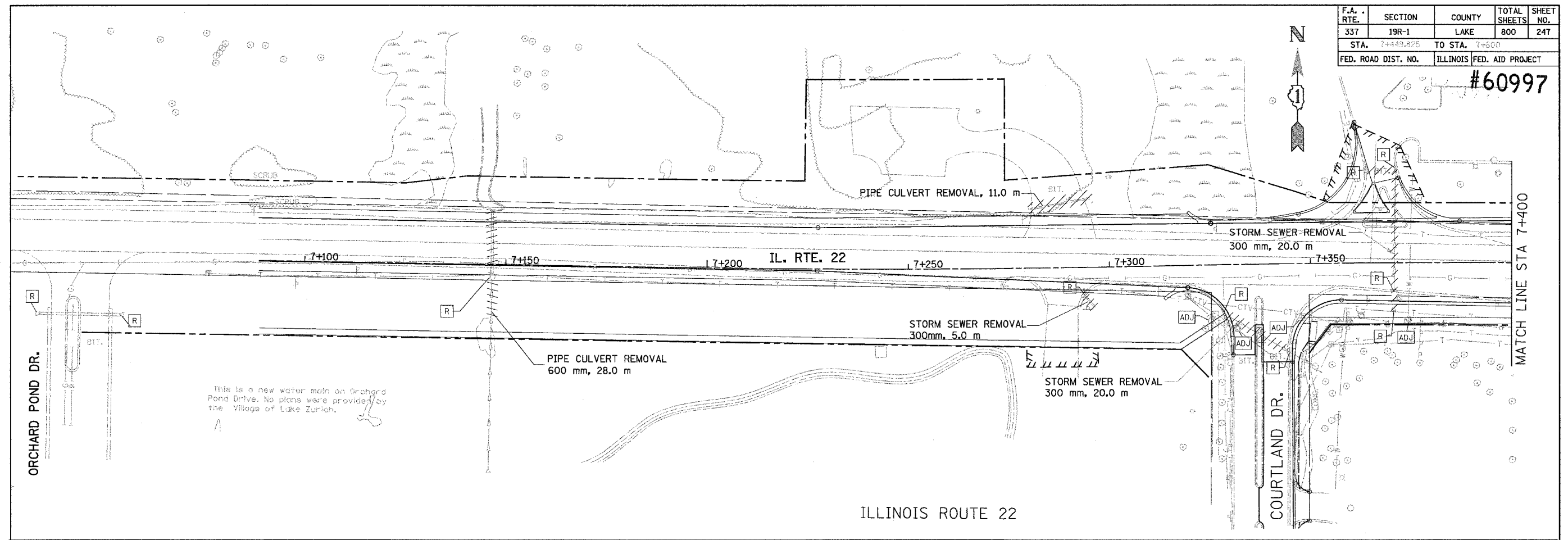


F.A. RTE.	SECTION	COUNTY	TOTAL SHEETS	SHEET NO.
337	19R-1	LAKE	800	247
STA. 7+449.825		TO STA. 7+600		
FED. ROAD DIST. NO.		ILLINOIS FED. AID PROJECT		

#60997



**LEGEND**

ADJ	STRUCTURE TO BE ADJUSTED
R	STRUCTURE TO BE REMOVED
F	STRUCTURE TO BE FILLED
REC	STRUCTURE TO BE RECONSTRUCTED
---	PIPE CULVERT OR SEWER REMOVAL

**REVISIONS**

NAME	DATE
REVISOR	
DESIGNER	
CHECKER	
DATE	

ILLINOIS DEPARTMENT OF TRANSPORTATION  
 ILLINOIS ROUTE 22  
 FROM US RTE 12 TO BUESCHING RD  
 UTILITY REMOVAL PLAN  
 STA. 7+150 TO STA. 7+600

SCALE : 1:500  
 DATE : 07/21/04

DESIGNED BY J.T.M.  
 CHECKED BY J.M.C.

ILLINOIS ROUTE 22