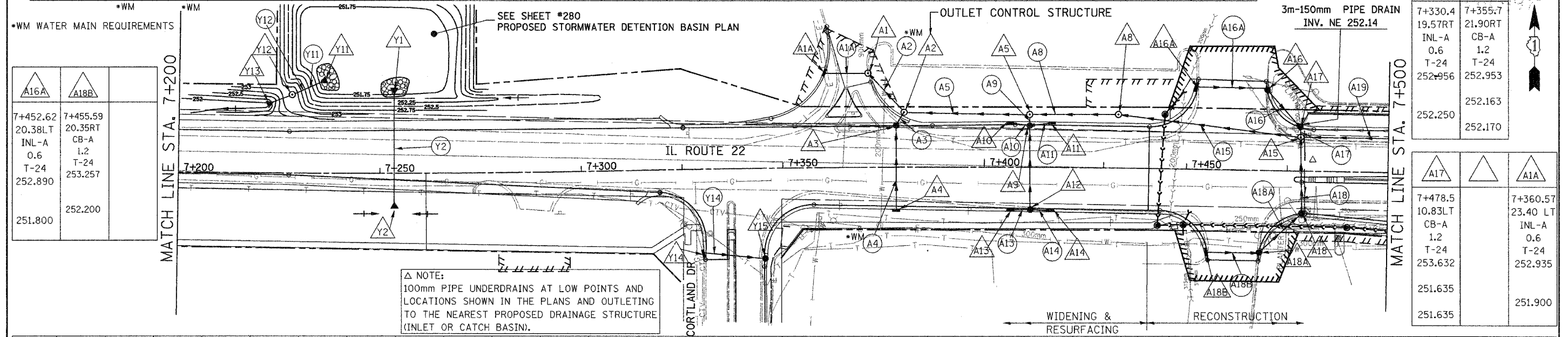


F.A. RTE.	SECTION	COUNTY	TOTAL SHEETS	SHEET NO.
337	19R-1	LAKE	800	259
STA. TO STA.		FED. ROAD DIST. NO. ILLINOIS FED. AID PROJECT		
		#60997		

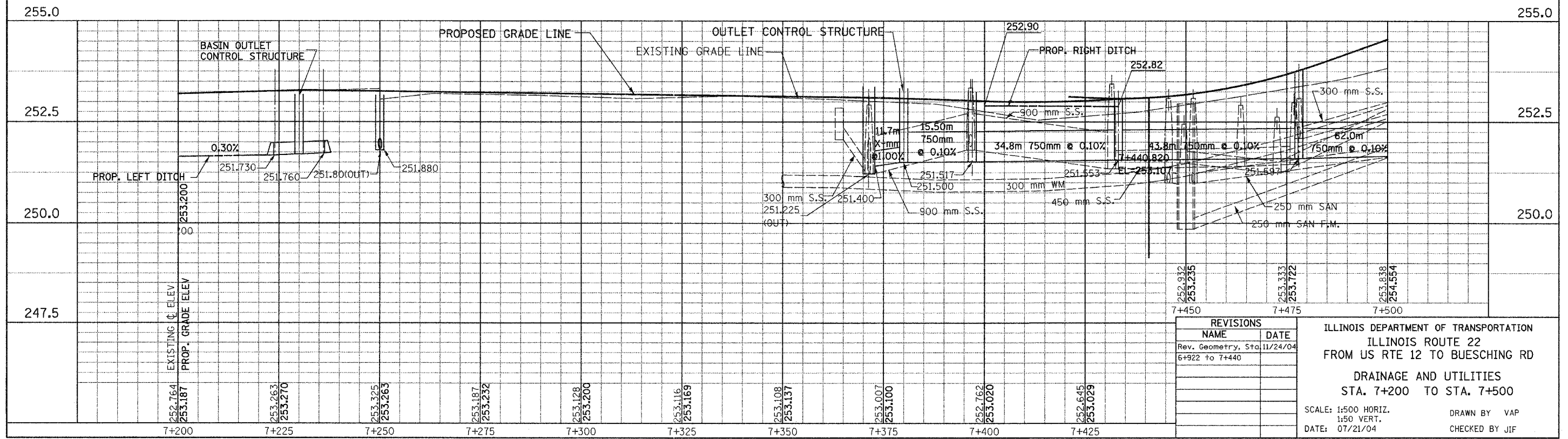
PIPE NO.	A2	A3	A4	A5		A8	A9	A10	A11	A12	A13	A14	A15	A16	A17	A18	A19	Y2						Y11	Y12	A18A	A1A	Y14	A16A	A18B	
SIZE (mm)	375	300	300	750		750	300	300	300	300	300	300	750	300	300	300	750	300						300	300	300		300	300	300	300
LENGTH (m)	11.7	2.3	19.5	29.5		20.5	1.9	3.8	3.8	19.5	3.8	3.8	43.8	10.6	1.4	17.5	58.5	10.3					6.5	6.5	12.9		9.9	15.0	16.9	12.2	
TYPE	2	1	1	2		2	1	1	1	1	1	1	2	1	1	1	3	2					2	2	1		1	1	1	1	
T.B.F. (CU. M.)	7.80	6.10	4.90	N/A		N/A	0.90	1.40	1.40	4.50	1.40	1.40	34.60	3.20	1.20	4.80	220.20	N/A					N/A	N/A	2.60		3.20	4.10	1.40	1.10	



Match Line Sta.	7+200	7+500
A16A	7+452.62	7+455.59
A18B	20.38LT	20.35RT
	INL-A	CB-A
	0.6	1.2
	T-24	T-24
	252.890	253.257
	251.800	252.200

Match Line Sta.	7+200	7+500
Y14	7+330.4	7+355.7
Y15	19.57RT	21.90RT
	INL-A	CB-A
	0.6	1.2
	T-24	T-24
	252.956	252.953
	252.250	252.163
	252.250	252.170
A17	7+478.5	7+360.57
	10.83LT	23.40 LT
	CB-A	INL-A
	1.2	0.6
	T-24	T-24
	253.632	252.935
	251.635	251.900
	251.635	251.900
A1A	7+478.5	7+360.57
	10.83LT	23.40 LT
	CB-A	INL-A
	1.2	0.6
	T-24	T-24
	253.632	252.935
	251.635	251.900
	251.635	251.900

STR. NO.	A1	A2	A3	A4	A5		A8	A9	A10	A11	A12	A13	A14	A15	A16	A18A	A18	Y1	Y2											Y11	Y12	Y13
STA.	7+371.2	7+380.0	7+378.2	7+378.2	7+397.0		7+433.3	7+433.3	7+428.3	7+438.3	7+411.28	7+428.3	7+438.3	7+478.5	7+469.61	7+468.26	7+478.5	7+250.0	7+250.0											7+236.0	7+230.0	7+224.0
OFF. (m)	23.40 LT	13.60 LT	10.30 LT	9.65 RT	13.60 LT		13.60 LT	10.55 LT	10.55 LT	10.50 LT	10.15 RT	10.10 RT	10.15 RT	8.40 LT	20.18 LT	20.49RT	10.43RT	19.57 LT	7.05 RT										23.00 LT	20.00 LT	18.00 LT	
TYPE	MH-A	O.C.S.	CB-A	INL-A	MH-A		MH-A	CB-A	INL-A	INL-A	CB-A	INL-A	INL-A	MH-A	CB-A	CB-A	CB-A	FES	FES									FES	O.C.S.	FES		
DIA. (m)	2.1	1.8	1.2	0.6	1.5		1.5	1.2	0.6	0.6	1.2	0.6	0.6	1.5	1.2	1.2	1.2	0.3	0.3									0.3	1.8	0.3		
F&G	T-1-CL	T-1-CL	T-24	T-24	T-1-CL		T-1-CL	T-24	T-24	T-24	T-24	T-24	T-24	T-1-CL	T-24	T-24	T-24											T-1-CL				
RIM EL.	252.935	253.300	253.191	253.191	253.150		253.100	252.935	252.944	252.945	253.001	252.944	252.945	253.680	252.906	253.110	253.640											253.200				
INV. N	251.225	251.500		252.300			251.100	251.875	251.875	251.792	251.792	251.792	251.792	251.635	251.792	252.400	252.015		251.880													
INV. S	251.400		252.088		251.531		251.553	251.875	251.875	251.792	251.792	251.792	251.792	251.835	251.690	252.015	252.015		251.800													
INV. E	251.305	251.500	252.088		251.531		251.553	251.598	251.598	251.792	251.792	252.043	251.792	251.597	251.690	252.080	252.080		251.800													
INV. W	251.625	251.938			251.531		251.553	251.598	251.598	251.792	251.792	252.043	251.792	251.597	251.690	252.080	252.080		251.800													



REVISIONS	
NAME	DATE
Rev. Geometry, Sta. 6+922 to 7+440	11/24/04

ILLINOIS DEPARTMENT OF TRANSPORTATION
 ILLINOIS ROUTE 22
 FROM US RTE 12 TO BUESCHING RD
DRAINAGE AND UTILITIES
 STA. 7+200 TO STA. 7+500

SCALE: 1:500 HORIZ.
 1:50 VERT.
 DATE: 07/21/04

DRAWN BY VAP
 CHECKED BY JIF

BY: _____ DATE: _____
 SURVEYED: _____
 PLOTTED: _____
 NOTE BOOK: _____
 TEMPLATE: _____
 AREAS CHECKED: _____

BY: _____ DATE: _____
 SURVEYED: _____
 PLOTTED: _____
 NOTE BOOK: _____
 TEMPLATE: _____
 AREAS CHECKED: _____