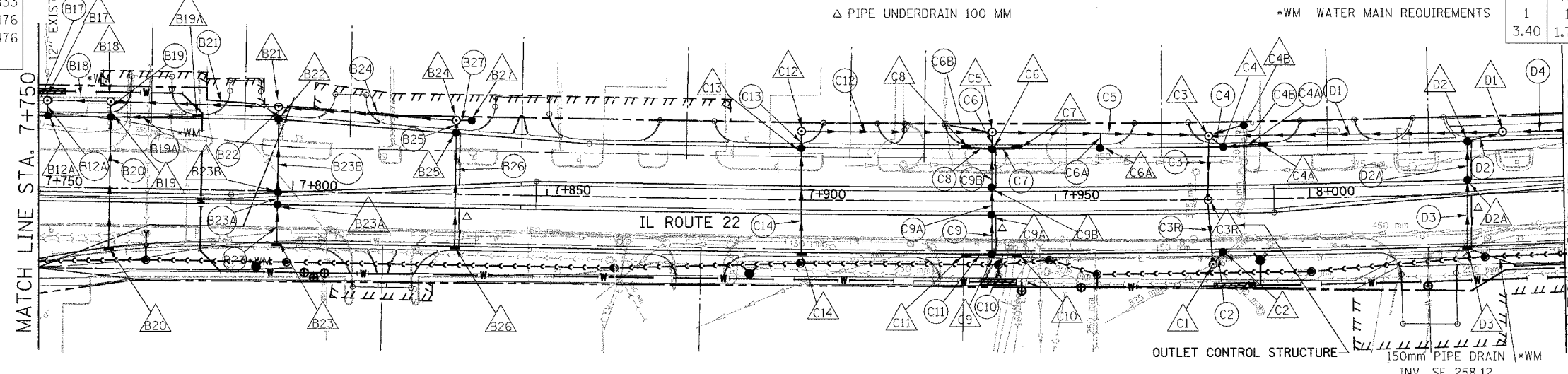


C9A	C9B	C3R
7+937.0	7+937.0	7+980.0
2.75 RT	2.75 LT	0
CB-A	CB-A	OCS
1.2	1.2	1.8
T-24	T-24	T-1-CL
258.041	258.041	258.833
256.872	256.829	255.476
256.872	256.829	255.476

*WM		C9A	C9B	C3R	PIPE NO.	B18	B19	B20	B21	B22	B23	B24	B25	B26	B27	C2	C3	C4	C5	C6	C7	C8	C9	C10	C11	C12	C13	C14	D1	D2	D3	D4	B23A	B23B	
300	300	375	300	300	300	300	300	300	300	300	300	300	300	300	300	300	900	300	750	300	300	300	300	300	300	300	300	300	750	300	300	300	300	300	300
4.3	6.4	8.9	4.3	4.3	4.3	4.3	4.3	4.3	4.3	4.3	4.3	4.3	4.3	4.3	4.3	2.4	8.8	2.3	41.5	1.7	3.8	3.8	6.4	3.8	35.7	2.0	19.5	56.5	6.1	12.2	30.7	1.3	13.1		
1	1	1	1	1	1	1	1	1	1	1	1	1	1	1	1	1	2	1	2	1	1	1	1	1	2	1	2	1	1	2	1	1	1		
1.60	2.90	29.40	1.60	1.60	1.60	1.60	1.60	1.60	1.60	1.60	1.60	1.60	1.60	1.60	1.60	1.00	44.40	1.00	N/A	1.00	1.10	1.10	1.50	1.10	1.10	N/A	1.00	8.70	147.80	4.50	5.60	67.00	1.00	5.90	
N/A	1.00	N/A	N/A	N/A	N/A	N/A	N/A	N/A	N/A	N/A	N/A	N/A	N/A	N/A	N/A	1.00	44.40	1.00	N/A	1.00	1.10	1.10	1.50	1.10	1.10	N/A	1.00	8.70	147.80	4.50	5.60	67.00	1.00	5.90	

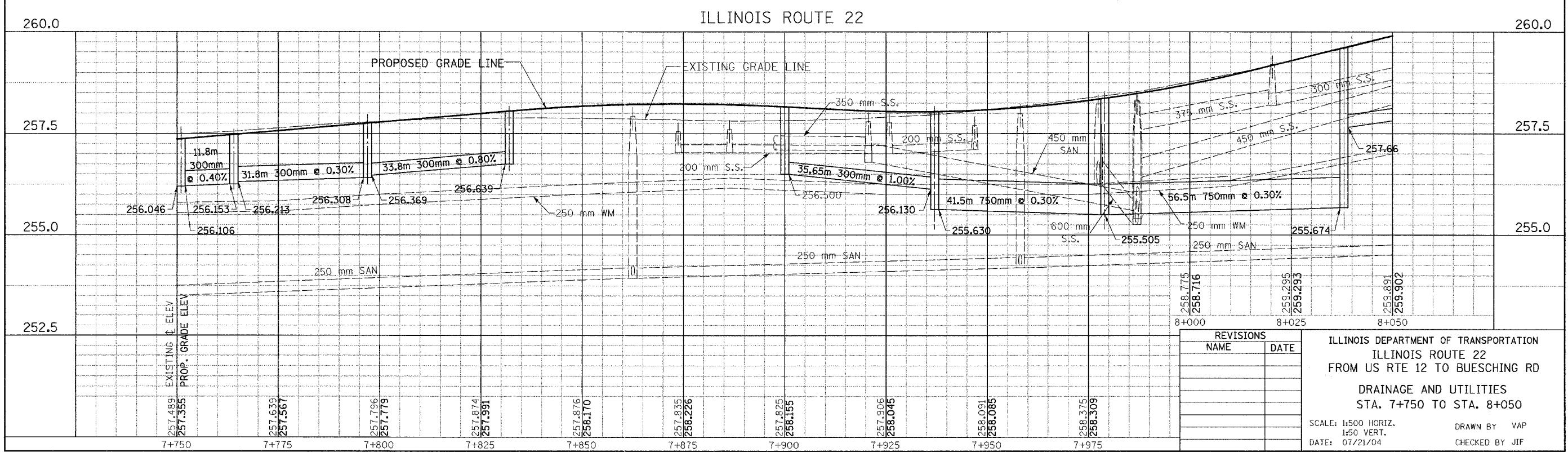
F.A. RTE.	SECTION	COUNTY	TOTAL SHEETS	SHEET NO.
337	19R-1	LAKE	800	261
STA.	TO STA.		PROJECT NO.	
	60997			
FED. ROAD DIST. NO.	ILLINOIS	FED. AID PROJECT		

D2A	C4B
8+031.0	7+987.3
2.75LT	14.5 LT
CB-A	CB-C
1.2	0.6
T-24	T-8
259.439	258.250
257.978	
257.979	
	255.560



B19A	B12A	C6A
7+781.0	7+751.0	7+959.0
13.95LT	13.95LT	10.35 LT
INL-A	CB-A	CB-A
0.6	1.2	1.2
T-24	T-24	T-24
257.411	257.139	258.011
	256.154	257.000
		256.504

STR. NO.	B17	B18	B19	B20	B21	B22	B23	B24	B25	B26	C1	C2	C3	C4	C5	C6	C7	C8	C9	C10	C11	C12	C13	C14	D1	D2	D3	B23A	B23B	C4A	B27			
STA.	7+751.0	7+764.0	7+764.0	7+764.0	7+797.0	7+797.0	7+797.0	7+832.0	7+832.0	7+832.0	7+980.0	7+983.0	7+980.0	7+983.0	7+937.0	7+937.0	7+942.0	7+932.0	7+937.0	7+942.0	7+932.0	7+937.0	7+942.0	7+932.0	7+900.0	7+900.0	7+900.0	8+038.0	8+031.0	8+031.0	7+797.0	7+797.0	7+991	7+835.0
OFF. (m)	17.00 LT	17.00 LT	13.95 LT	11.61 RT	16.5LT	13.95 LT	10.35 RT	14.5 LT	11.93	10.35 RT	12.68 RT	10.35 RT	12.60 LT	10.35 LT	13.50 LT	10.35 LT	10.35 LT	10.35 LT	10.35 RT	10.35 RT	10.35 RT	10.35 RT	10.35 RT	10.35 RT	13.50 LT	10.35 LT	10.35 RT	12.0LT	10.35 LT	10.35 RT	2.75RT	0.30RT	10.35 LT	14.50 LT
TYPE	MH-A	MH-A	CB-A	INL-A	MH-A	CB-A	INL-A	MH-A	CB-A	INL-A	MH-A	CB-A	MH-A	CB-A	MH-A	CB-A	INL-A	INL-A	CB-A	INL-A	INL-A	INL-A	INL-A	INL-A	MH-A	CB-A	INL-A	MH-A	CB-A	INL-A	CB-A	INL-A	CB-A	CB-C
DIA. (m)	1.2	1.2	1.2	0.6	1.2	1.2	0.6	1.2	1.2	0.6	1.5	1.2	1.5	1.2	1.5	1.2	0.6	0.6	1.2	1.2	0.6	0.6	0.6	1.2	1.2	0.6	1.5	1.2	0.6	1.2	0.6	1.2	0.6	0.6
F&G	T-1-CL	T-1-CL	T-24	T-24	T-1-CL	T-24	T-24	T-1-CL	T-24	T-24	T-1-CL	T-24	T-1-CL	T-24	T-1-CL	T-24	T-24	T-24	T-24	T-24	T-24	T-24	T-24	T-24	T-1-CL	T-24	T-24	T-1-CL	T-24	T-24	T-24	T-24	T-24	T-8
RIM EL.	257.152	257.270	257.250	257.276	257.640	257.529	257.601	257.975	257.866	257.898	258.294	258.267	258.200	258.267	257.967	257.889	257.900	257.885	257.889	257.936	257.900	257.885	257.885	258.055	258.003	258.003	259.355	259.287	259.287	257.753	257.799	258.397	257.600	
INV. N	256.250	256.343	256.343	256.465	256.380	256.380	256.588	256.639	256.649	256.852	255.438	255.505	255.505	255.505	256.748	256.765	256.765	256.803	256.936	256.936	257.050	256.560	256.560	256.580	256.580	256.775	257.853	257.914	257.914	256.524	256.511	257.400	256.661	
INV. S	256.130	256.213	256.343	256.343	256.369	256.380	256.588	256.639	256.649	256.852	255.370	255.505	255.505	255.505	256.748	256.765	256.765	256.803	256.936	256.936	257.050	256.560	256.560	256.580	256.580	256.775	257.853	257.914	257.914	256.524	256.511	257.400	256.661	
INV. E	256.106	256.213	256.343	256.343	256.369	256.380	256.588	256.639	256.649	256.852	255.370	255.505	255.505	255.505	256.748	256.765	256.765	256.803	256.936	256.936	257.050	256.560	256.560	256.580	256.580	256.775	257.853	257.914	257.914	256.524	256.511	257.400	256.661	
INV. W	256.046	256.153	256.343	256.343	256.369	256.380	256.588	256.639	256.649	256.852	255.370	255.505	255.505	255.505	256.748	256.765	256.765	256.803	256.936	256.936	257.050	256.560	256.560	256.580	256.580	256.775	257.853	257.914	257.914	256.524	256.511	257.400	256.661	



REVISIONS	
NAME	DATE

ILLINOIS DEPARTMENT OF TRANSPORTATION
 ILLINOIS ROUTE 22
 FROM US RTE 12 TO BUESCHING RD
 DRAINAGE AND UTILITIES
 STA. 7+750 TO STA. 8+050

SCALE: 1:500 HORIZ.
 1:50 VERT.
 DATE: 07/21/04

DRAWN BY VAP
 CHECKED BY JIF

FINAL SURVEY PLOTTED
 NOTE BOOK TEMPLATE
 AREAS CHECKED

ORIGINAL SURVEYED
 SURVEY PLOTTED
 NOTE BOOK TEMPLATE
 AREAS CHECKED