

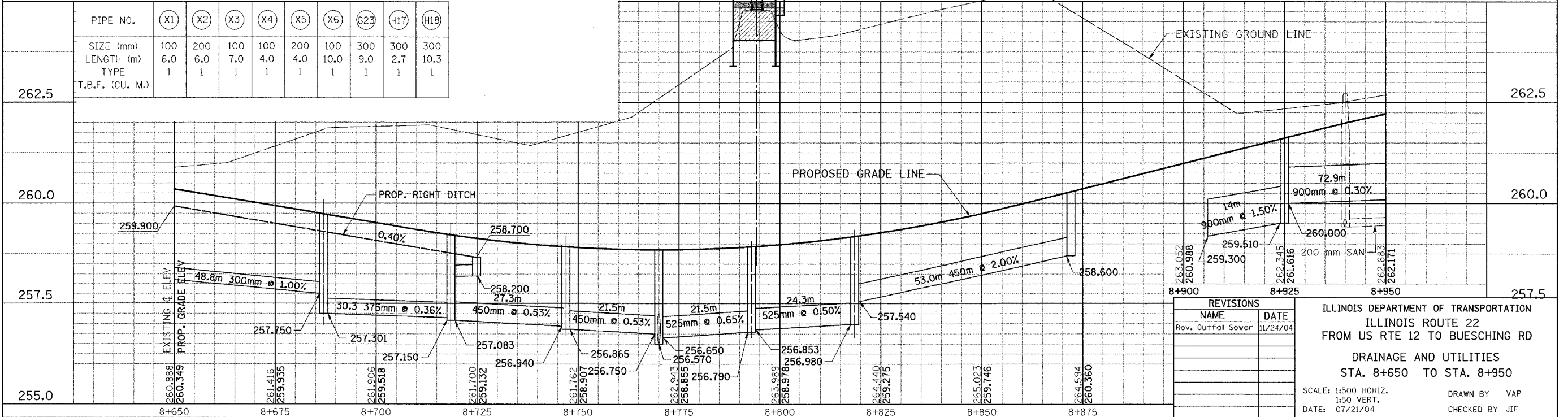
#60997

F.A. RTE.	SECTION	COUNTY	TOTAL SHEETS	SHEET NO.
337	19R-1	LAKE	800	264
STA.	TO STA.			
FED. ROAD DIST. NO.	ILLINOIS FED. AID PROJECT			

(H16)	PIPE NO.	(G2)	(G3)	(G4)	(G5)	(G6)	(G7)	(G8)	(G9)	(G10)	(G11)	(G12)	(G13)	(G14)	(G15)	(G16)	(H1)	(H2)	(H3)	(H4)	(H5)	(H6)	(H7)	(H8)	(H9)	(G2A)	(I2A)	(G5A)	(G10A)	(I2)	(H5A)	(H8A)	(H9A)	(G13A)	(H14)	(H15)
375	SIZE (mm)	300	300	300	300	300	300	450	300	300	450	300	300	375	300	300	525	300	300	525	300	300	450	300	300	900	300	300	900	300	300	300	300	300	300	
3.6	LENGTH (m)	9.2	3.8	3.8	1.6	3.8	3.8	21.7	9.2	6.4	27.3	1.6	9.2	30.3	1.6	9.2	21.5	9.2	1.6	24.2	9.2	1.6	53.0	9.2	1.6	14.0	6.4	1.6	69.3	1.4	300	300	6.0	300	300	
1	TYPE	1	1	1	1	1	1	2	1	1	2	1	1	2	1	1	2	1	1	2	1	1	2	1	1	2	1	1	2	1	1	1	1	1	1	
0.80	T.B.F. (CU. M.)	2.20	0.90	0.90	0.80	0.80	0.90	N/A	2.20	3.30	N/A	0.40	2.20	N/A	0.40	2.20	N/A	2.20	0.40	N/A	2.20	0.40	112.30	2.30	0.40	12.00	2.30	0.30	199.70	0.40	0.40	1.50	1.00	2.80	3.20	

(H17)	(H18)	(H19)
8+924.1	8+931.1	8+942.0
13.3 RT	13.3 RT	14.4 RT
INL-A	CB-A	PROP.
0.6	1.2	MH
T-8	T-24	BY
262.000	262.030	OTHERS
261.000	260.945	260.842
260.945	260.945	

STR. NO.	(G1)	(G2)	(G3)	(G4)	(G5)	(G6)	(G7)	(G8)	(G9)	(G10)	(G11)	(G12)	(G13)	(G14)	(G15)	(G16)	(H1)	(H2)	(H3)	(H4)	(H5)	(H6)	(H7)	(H8)	(H9)	(G2A)	(G5A)	(G10A)	(I1)	(H5A)	(H8A)	
STA.	8+770.0	8+770.0	8+775.0	8+765.0	8+770.0	8+775.0	8+765.0	8+742.0	8+742.0	8+742.0	8+718.5	8+718.5	8+718.5	8+687.0	8+687.0	8+687.0	8+793.0	8+793.0	8+793.0	8+818.5	8+818.5	8+818.5	8+873.0	8+873.0	8+873.0	8+770.0	8+770.0	8+742.0	8+919.40	8+818.5	8+873.0	
OFF. (m)	0.00 RT	10.35 LT	10.35 LT	10.35 LT	2.75 RT	10.35 RT	10.35 RT	0.00	10.35 LT	10.35 RT	0.00	2.75 LT	10.35 RT	0.00	2.75 LT	10.35 RT	0.00 RT	10.35 LT	2.75 RT	0.00 RT	10.35 LT	2.75 RT	0.00 RT	10.35 LT	2.75 RT	2.75 LT	10.35 RT	2.75 RT	25.4 LT	2.75 RT	10.35 LT	
TYPE	MH-A	CB-A	INL-A	INL-A	CB-A	INL-A	INL-A	MH-A	CB-A	CB-A	MH-A	CB-A	CB-A	MH-A	CB-A	CB-A	MH-A	CB-A	CB-A	MH-A	CB-A	CB-A	MH-A	INL-A	CB-A	CB-A	CB-A	FES	CB-A	CB-A		
DIA. (m)	1.8	1.2	0.6	0.6	1.2	0.6	0.6	1.2	1.2	1.2	1.2	1.2	1.2	1.2	1.2	1.2	1.2	1.2	1.2	1.2	1.2	1.2	0.6	1.2	1.2	1.2	1.2	900	1.2	1.2		
F&G	T-1-CL	T-24	T-24	T-24	T-24	T-24	T-24	T-1-CL	T-24	T-24	T-1-CL	T-24	T-24	T-1-CL	T-24	T-24	T-1-CL	T-24	T-24	T-24	T-1-CL	T-24	T-24	T-24	T-24	T-24	T-24	T-24	T-24	T-24	T-24	
RIM EL.	259.044	258.768	258.796	258.798	258.852	258.838	258.774	259.152	259.051	258.808	259.411	259.219	258.964	259.927	259.734	259.468	259.199	258.739	258.926	259.374	258.938	259.182	260.477	260.059	260.310	258.852	258.799	258.960	259.188	260.310		
INV. N	257.720				257.600			257.900		257.800	258.270		258.000	258.800	258.800	258.500	257.700	257.800	257.900	257.700	257.900	257.700	258.200	258.970	259.100	259.200	257.750	257.700	257.500	259.300	257.800	259.000
INV. S	256.570	257.850		257.900	257.600			257.470		258.100	257.910		258.300	258.410	258.800	257.870	257.800	257.900	258.170	257.900	257.900	258.170	259.170	259.100	259.200	257.750	257.700	257.500	257.800	259.000	259.000	
INV. E	256.750	257.850		257.900	257.600		257.800	256.865		257.301	257.083		257.150	257.301	257.750	256.790	256.853	257.9NE	257.540	257.540	257.540	257.540	259.170	259.100	259.200	257.750	257.700	257.500	257.800	259.000	259.000	
INV. W	256.650	257.850	257.900		257.900		257.900	256.940		257.900	257.083		257.150	257.301	257.750	256.790	256.853	257.9NE	257.540	257.540	257.540	257.540	259.170	259.100	259.200	257.750	257.700	257.500	257.800	259.000	259.000	
INV. SW	256.500				257.900		257.900	256.940		257.900	257.083		257.150	257.301	257.750	256.790	256.853	257.9NE	257.540	257.540	257.540	257.540	259.170	259.100	259.200	257.750	257.700	257.500	257.800	259.000	259.000	



REVISIONS	
NAME	DATE
Rev. Outfall Sewer	11/24/04

ILLINOIS DEPARTMENT OF TRANSPORTATION
 ILLINOIS ROUTE 22
 FROM US RTE 12 TO BUESCHING RD
 DRAINAGE AND UTILITIES
 STA. 8+650 TO STA. 8+950
 SCALE: 1:500 HORIZ.
 1:50 VERT.
 DATE: 07/21/04
 DRAWN BY VAP
 CHECKED BY JIF

FINAL SURVEYED
 SURVEY PLOTTED
 NOTE BOOK TEMPLATE
 AREAS CHECKED
 NO.

ORIGINAL SURVEYED
 SURVEY PLOTTED
 NOTE BOOK TEMPLATE
 AREAS CHECKED
 NO.