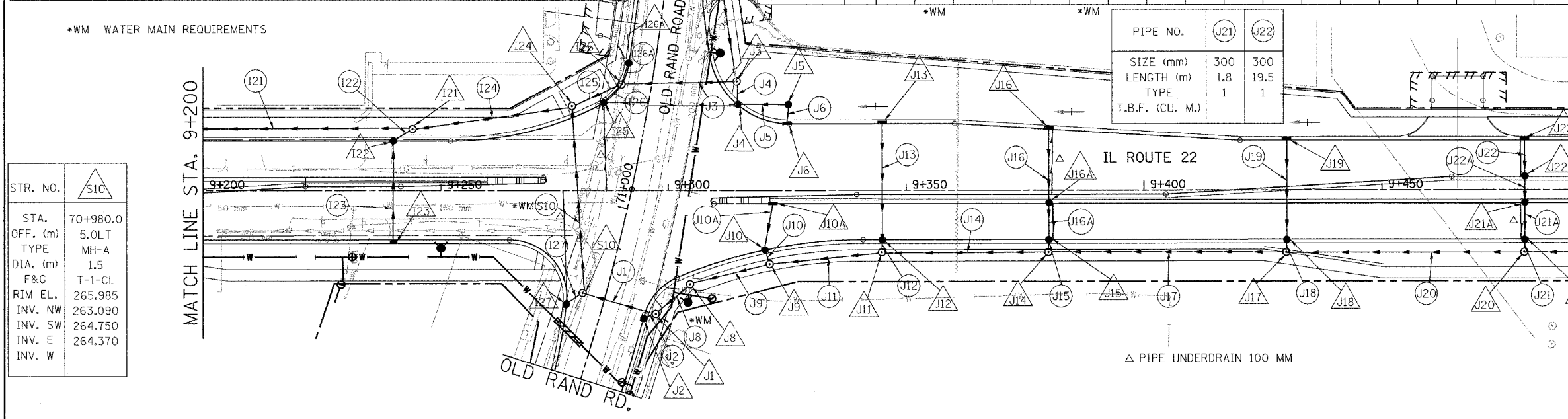


PIPE NO.	I16	I17	I18	I19	I20	I21	I22	I23	I24	I25	I26	I27	J16A	J26A
SIZE (mm)	300	300	750	300	300	750	300	300	750	375	300	300	300	300
LENGTH (m)	2.0	19.5	36.2	2.0	12.2	48.8	4.0	19.5	37.8	9.9	4.2	2.7	8.6	3.8
TYPE	1	1	2	1	1	2	1	1	2	2	1	1	1	1
T.B.F. (CU. M.)	0.50	5.40	129.27	0.60	11.10	221.60	2.10	5.40	171.60	25.15	2.42	0.60	2.00	1.00

PIPE NO.	J1	J2	J3	J4	J5	J6	J8	J9	J10	J11	J12	J13	J14	J15	J16	J17	J18	J19	J20
SIZE (mm)	450	300	375	300	300	300	375	600	300	600	300	300	600	300	300	600	300	300	600
LENGTH (m)	14.5	1.6	22.8	3.7	9.3	4.0	7.8	16.5	1.8	22.5	1.8	23.1	33.5	1.8	14.5	48.5	1.8	19.5	48.5
TYPE	2	1	2	1	1	1	1	1	1	1	1	1	2	1	1	2	1	1	3
T.B.F. (CU. M.)	0.80	0.80	10.10	1.80	1.00	1.00	7.20	44.40	0.60	42.30	0.60	6.40	74.7	0.60	5.20	180.80	0.60	6.20	23.20

F.A. RTE.	SECTION	COUNTY	TOTAL SHEETS	SHEET NO.
337	19R-1	LAKE	800	266
STA.	TO STA.		60997	
FED. ROAD DIST. NO.		ILLINOIS FED. AID PROJECT		



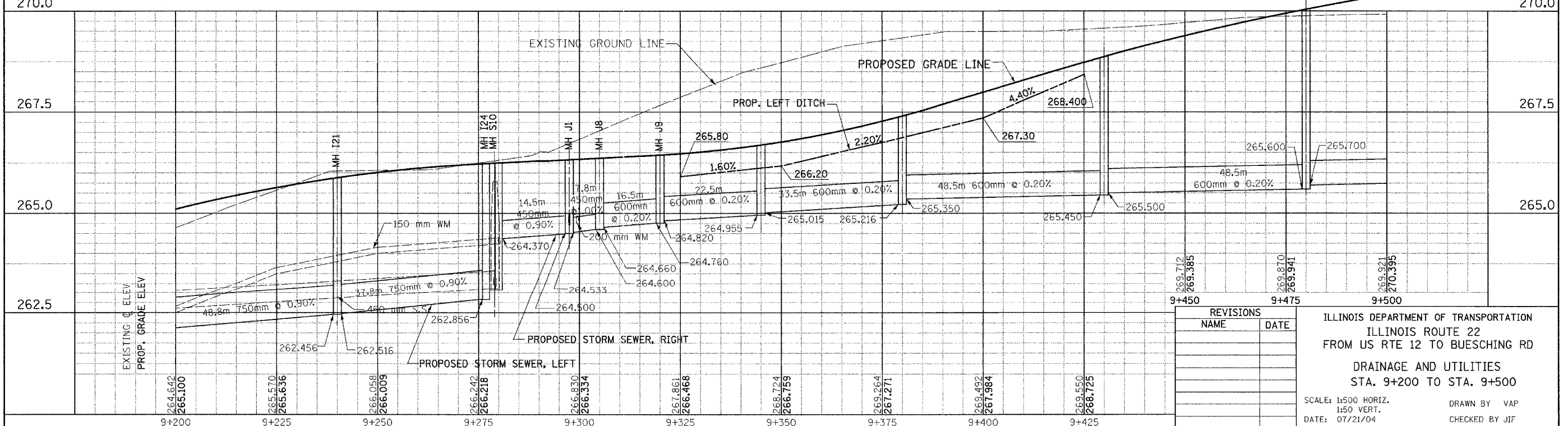
STR. NO.	S10
STA.	70+980.0
OFF. (m)	5.0LT
TYPE	MH-A
DIA. (m)	1.5
F&G	T-1-CL
RIM EL.	265.985
INV. NW	263.090
INV. SW	264.750
INV. E	264.370
INV. W	

PIPE NO.	J21	J22
SIZE (mm)	300	300
LENGTH (m)	1.8	19.5
TYPE	1	1
T.B.F. (CU. M.)		

J21A	J22A	J10A	S10
300	300	300	450
6.4	4.3	8.6	38.8
1	1	1	2
0.80	1.20	2.00	164.9

J21A	J22A	J10A
9+480.0	9+480.0	9+325.0
2.75 RT	2.75 LT	2.75RT
CB-A	CB-A	INL-A
1.2	1.2	0.6
T-24	T-24	T-24
270.040	270.040	266.447
268.793	268.836	265.400

STR. NO.	I21	I22	I23	I24	I25	I26	J16A	I27	J1	J2	J3	J4	J5	J6	J8	J9	J10	J11	J12	J13	J14	J15	J16	J17	J18	J19	J20	J21	J22	I26A	
STA.	9+244.0	9+240.0	9+240.0	9+278.8	9+284.2	9+288.0	9+380.0	9+276.3	9+297.4	9+295.0	9+314.5	9+314.5	9+325.0	9+325.0	9+305.0	9+321.3	9+320.4	9+345.0	9+345.0	9+345.0	9+380.0	9+380.0	9+380.0	9+430.0	9+430.0	9+430.0	9+430.0	9+480.0	9+480.0	9+480.0	9+289.8
OFF. (m)	13.50 LT	10.35 LT	10.35 RT	17.0LT	18.2 LT	22.2 LT	2.75RT	24.00 RT	25.94 RT	26.10 RT	22.80 RT	17.92 LT	17.90 LT	13.95 LT	22.00 RT	15.50 RT	12.50 RT	13.50 RT	10.35 RT	13.95 LT	13.50 RT	10.35 RT	12.62 LT	13.50 RT	10.35 RT	10.35 RT	10.35 LT	13.50 RT	10.35 RT	10.35 LT	26.6 LT
TYPE	MH-A	CB-A	INL-A	MH-A	CB-A	MH-A	CB-A	CB-A	MH-A	CB-A	CB-A	MH-A	CB-C	INL-A	O.C.S.	MH-A	CB-A	MH-A	CB-A	INL-A	MH-A	CB-A	INL-A	MH-A	CB-A	INL-A	MH-A	CB-A	INL-A	CB-A	CB-A
DIA. (m)	1.5	1.2	0.6	1.5	1.2	1.5	1.2	1.2	1.5	1.2	1.2	1.2	0.6	0.6	1.8	1.5	1.2	1.5	1.2	0.6	1.5	1.2	0.6	1.5	1.2	0.6	1.5	1.2	0.6	1.2	1.2
F&G	T-1-CL	T-24	T-24	T-1-CL	T-24	T-24	T-24	T-24	T-1-CL	T-24	T-24	T-1-CL	T-8	T-24	T-1-CL	T-1-CL	T-24	T-1-CL	T-24	T-24	T-1-CL	T-24	T-24	T-1-CL	T-24	T-1-CL	T-24	T-1-CL	T-24	T-24	T-24
RIM EL.	265.745	265.727	265.727	266.600	266.000	266.120	267.400	265.883	265.988	265.900	266.250	266.116	265.800	266.244	266.017	266.440	266.252	266.586	266.531	266.459	267.299	267.248	267.203	268.742	268.713	268.713	269.917	269.888	269.888	266.151	
INV. N	264.400	264.500	264.700	262.896	265.100	265.201	266.055	264.800	264.778	264.800	264.198	265.200	265.300	266.244	266.017	265.250	265.300	265.200	265.270	265.500	265.800	265.990	265.990	267.467	267.487	267.700	268.700	268.729	268.729	265.241	
INV. S	262.400	264.500		262.896	265.100	265.201	266.055	264.800	264.778	264.800	264.198	265.200	265.300	266.244	266.017	265.250	265.300	265.200	265.270	265.500	265.800	265.990	265.990	267.467	267.487	267.700	268.700	268.729	268.729	265.241	
INV. E	262.516	264.500		264.167	263.930	263.930	266.055	264.800	264.533	264.800	264.198	265.200	265.300	266.244	266.017	265.250	265.300	265.200	265.270	265.500	265.800	265.990	265.990	267.467	267.487	267.700	268.700	268.729	268.729	265.241	
INV. W	262.456	264.500		262.856	263.930	263.930	266.055	264.800	264.500	264.800	264.198	265.200	265.300	266.244	266.017	265.250	265.300	265.200	265.270	265.500	265.800	265.990	265.990	267.467	267.487	267.700	268.700	268.729	268.729	265.241	



EXISTING @ ELEV	PROF. GRADE ELEV
264.642	264.100
265.570	265.636
266.058	266.009
266.242	266.218
266.830	266.334
267.861	266.468
268.724	266.759
269.264	267.271
269.482	267.984
269.550	268.725

REVISIONS	
NAME	DATE

ILLINOIS DEPARTMENT OF TRANSPORTATION
 ILLINOIS ROUTE 22
 FROM US RTE 12 TO BUESCHING RD
 DRAINAGE AND UTILITIES
 STA. 9+200 TO STA. 9+500

SCALE: 1:500 HORIZ.
 1:50 VERT.
 DATE: 07/21/04

DRAWN BY VAP
 CHECKED BY JIF

FINAL SURVEYED
 SURVEY PLOTTED
 NOTE BOOK TEMPLATE
 AREAS CHECKED

ORIGINAL SURVEYED
 SURVEY PLOTTED
 NOTE BOOK TEMPLATE
 AREAS CHECKED