

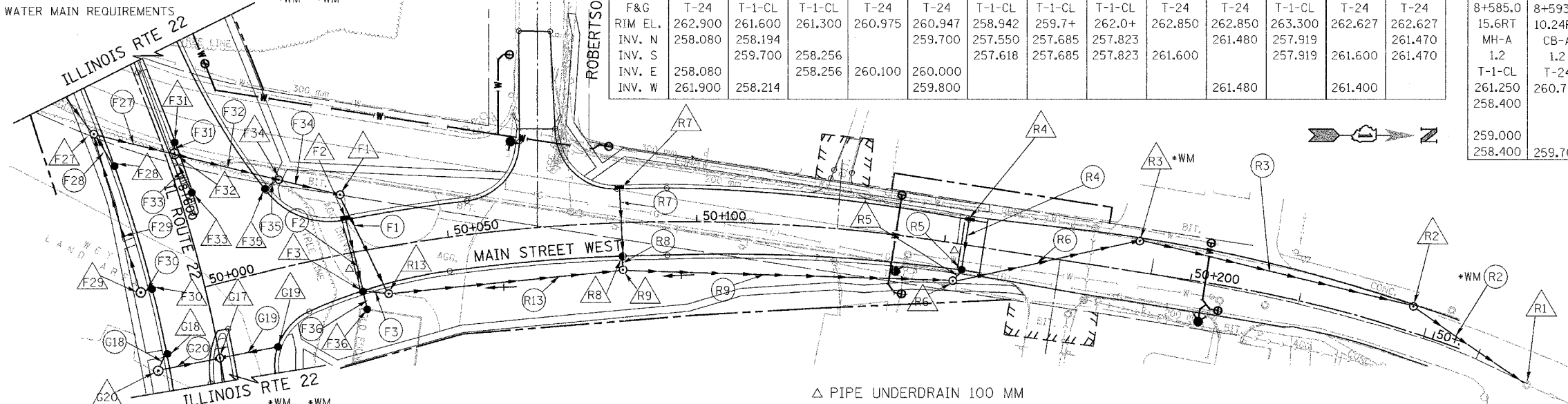
F.A. RTE.	SECTION	COUNTY	TOTAL SHEETS	SHEET NO.
337	19R-1	LAKE	800	273
STA.	TO STA.		60997	
FED. ROAD DIST. NO.	ILLINOIS FED. AID PROJECT			

PIPE NO.	(R9)	(R13)	(F1)	(F2)	(F3)	(R2)	(R3)	(R4)	(R5)	(R6)	(R7)	(R8)
SIZE (mm)	375	375	375	300	300	375	375	300	300	375	300	300
LENGTH (m)	64.5	45.6	20.8	14.7	3.9	26.6	55.4	11.8	4.8	38.2	14.3	1.6
TYPE	3	3	2	1	1	2	3	1	1	3	1	1
T.B.F. (CU. M.)	N/A	N/A	104.30	3.40	0.50	57.50	210.90	5.80	1.00	214.10	3.30	1.00

STR. NO.	(R9)	(R13)	(F1)	(F2)	(F3)	(R1)	(R2)	(R3)	(R4)	(R5)	(R6)	(R7)	(R8)
STA. OFF. (m)	50+084.3	50+036.4	50+030	50+031.0	50+0310	50+271.0	50+245.0	50+188.7	50+154.1	50+154.1	50+152.6	50+084.7	50+084.7
TYPE	9.5RT	9.39RT	11.9LT	6.84LT	7.88RT	0.00	4.75 LT	5.00 LT	5.12LT LT	5.12RT	7.5RT	6.75 LT	6.75 RT
DIA. (m)	CB-A	MH-A	MH-A	INL-A	CB-A	MH-A	MH-A	MH-A	INL-A	CB-A	MH-A	CB-A	INL-A
F&G	1.2	1.2	1.2	0.6	1.2	1.2	1.2	1.2	0.6	1.2	1.2	1.2	0.6
RIM EL.	T-24	T-1-CL	T-1-CL	T-24	T-24	T-1-CL	T-1-CL	T-1-CL	T-24	T-24	T-1-CL	T-24	T-24
INV. N	262.900	261.600	261.300	260.975	260.947	258.942	259.7+	262.0+	262.850	262.850	263.300	262.627	262.627
INV. S	258.080	258.194	258.256	260.100	259.700	257.550	257.685	257.823	261.600	261.480	257.919	261.600	261.470
INV. E	258.080	258.194	258.256	260.100	259.700	257.550	257.685	257.823	261.600	261.480	257.919	261.600	261.470
INV. W	261.900	258.214			259.800						261.480	261.400	

(F27)	(F28)	(F29)	(F30)	(F31)
8+585.0	8+593.0	8+614.81	8+615.0	8+593.0
15.6RT	10.24RT	12.76RT	10.35RT	2.72LT
MH-A	CB-A	MH-A	CB-A	CB-A
1.2	1.2	1.2	1.2	1.2
T-1-CL	T-24	T-1-CL	T-24	T-24
261.250	260.724	261.030	260.475	260.962
258.400		259.400		
			259.500	
259.000				259.900
258.400	259.700	259.300		

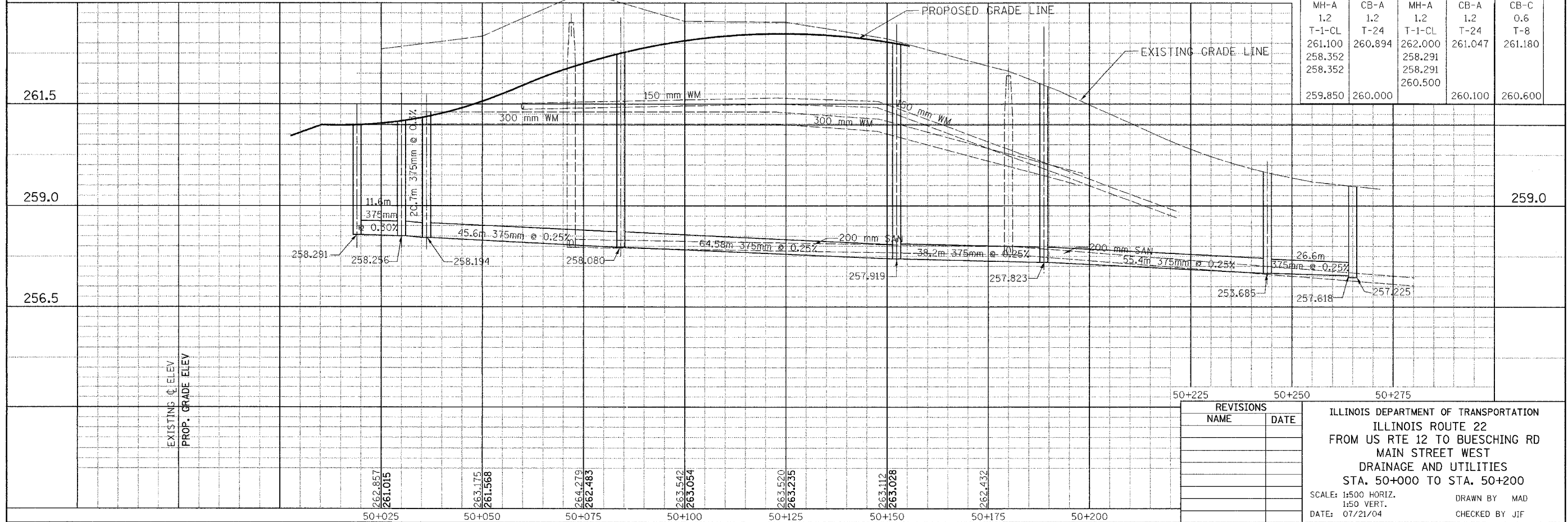
\*WM WATER MAIN REQUIREMENTS



PIPE NO.	(F27)	(F28)	(F29)	(F30)	(F31)	(F32)	(F33)	(F34)	(F35)	(F36)
SIZE (mm)	375	300	300	300	300	375	300	375	300	300
LENGTH (m)	16.0	7.3	32.2	1.2	0.9	20.4	7.6	11.3	2.5	3.1
TYPE	2	1	1	1	1	2	1	3	1	1
T.B.F. (CU. M.)	47.70	1.70	74.80	0.40	0.40	68.50	1.80	59.10	0.60	0.60

\*\* STORM SEWER PIPE 900 mm JACKED IN CASING. CASING SHALL NOT BE PAID SEPARATELY BUT INCLUDED IN STORM SEWER PIPE.

(F32)	(F33)	(F34)	(F35)	(F36)
8+595.07	8+603.0	8+606.0	8+607.0	50+031.0
1.77LT	2.61RT	20.1LT	16.86LT	11.91RT
MH-A	CB-A	MH-A	CB-A	CB-C
1.2	1.2	1.2	1.2	0.6
T-1-CL	T-24	T-1-CL	T-24	T-8
261.100	260.894	262.000	261.047	261.180
258.352		258.291		
258.352		258.291		
		260.500		
259.850	260.000		260.100	260.600



REVISIONS	
NAME	DATE

ILLINOIS DEPARTMENT OF TRANSPORTATION  
 ILLINOIS ROUTE 22  
 FROM US RTE 12 TO BUESCHING RD  
 MAIN STREET WEST  
 DRAINAGE AND UTILITIES  
 STA. 50+000 TO STA. 50+200  
 SCALE: 1:500 HORIZ. DRAWN BY MAD  
 1:50 VERT. CHECKED BY JIF  
 DATE: 07/21/04

FINAL SURVEYED SURVEY PLOTTED NOTE BOOK TEMPLATE AREAS CHECKED NO.

ORIGINAL SURVEYED SURVEY PLOTTED NOTE BOOK TEMPLATE AREAS CHECKED NO.