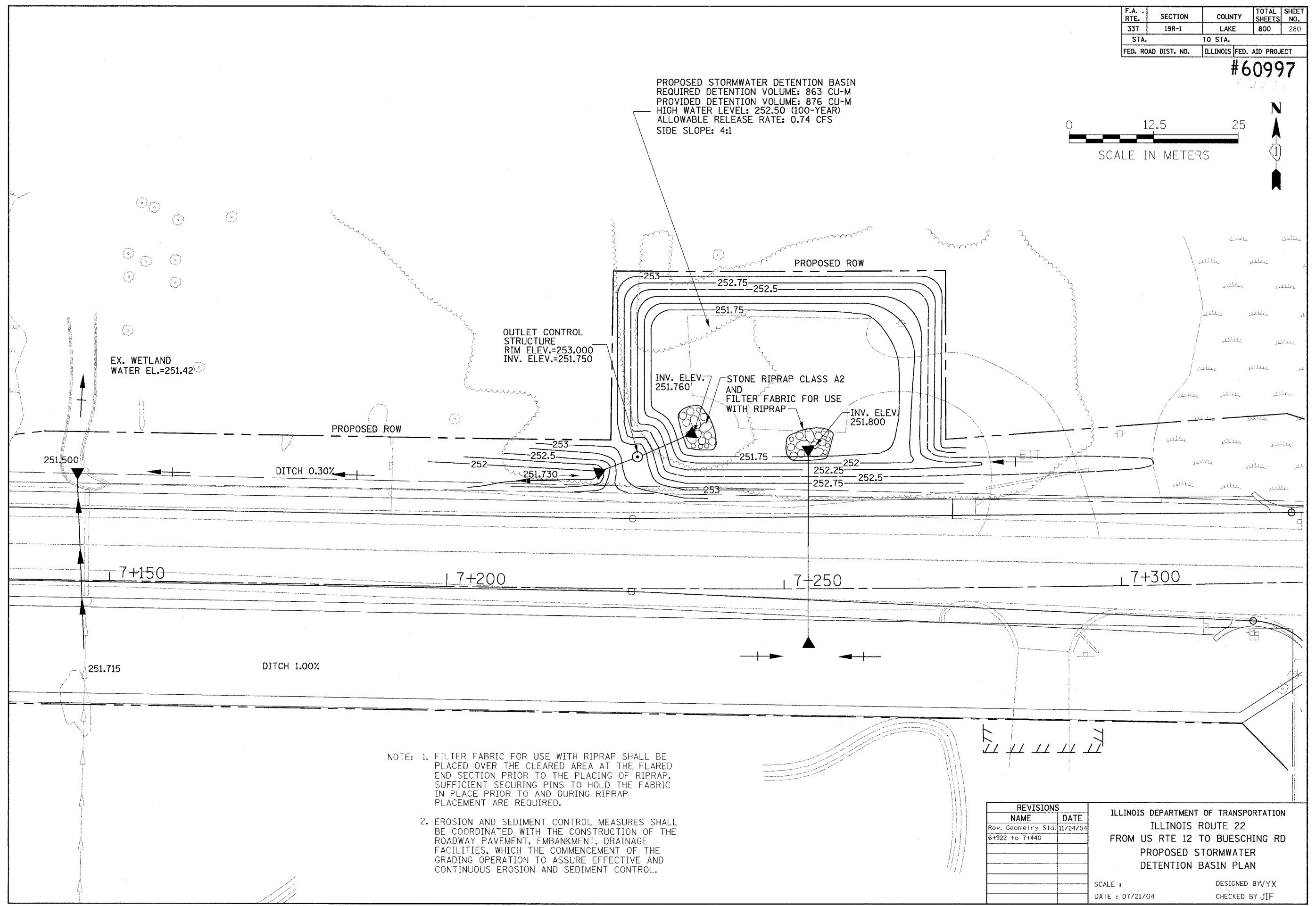
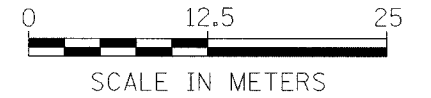


F.A. RTE.	SECTION	COUNTY	TOTAL SHEETS	SHEET NO.
337	19R-1	LAKE	800	280
STA.	TO STA.			
FED. ROAD DIST. NO.	ILLINOIS	FED. AID PROJECT		

#60997

PROPOSED STORMWATER DETENTION BASIN
 REQUIRED DETENTION VOLUME: 863 CU-M
 PROVIDED DETENTION VOLUME: 876 CU-M
 HIGH WATER LEVEL: 252.50 (100-YEAR)
 ALLOWABLE RELEASE RATE: 0.74 CFS
 SIDE SLOPE: 4:1



- NOTE: 1. FILTER FABRIC FOR USE WITH RIPRAP SHALL BE PLACED OVER THE CLEARED AREA AT THE FLARED END SECTION PRIOR TO THE PLACING OF RIPRAP. SUFFICIENT SECURING PINS TO HOLD THE FABRIC IN PLACE PRIOR TO AND DURING RIPRAP PLACEMENT ARE REQUIRED.
2. EROSION AND SEDIMENT CONTROL MEASURES SHALL BE COORDINATED WITH THE CONSTRUCTION OF THE ROADWAY PAVEMENT, EMBANKMENT, DRAINAGE FACILITIES, WHICH THE COMMENCEMENT OF THE GRADING OPERATION TO ASSURE EFFECTIVE AND CONTINUOUS EROSION AND SEDIMENT CONTROL.

REVISIONS	
NAME	DATE
Rev. Geometry Std.	11/24/04
6+922 to 7+440	

ILLINOIS DEPARTMENT OF TRANSPORTATION
 ILLINOIS ROUTE 22
 FROM US RTE 12 TO BUESCHING RD
 PROPOSED STORMWATER
 DETENTION BASIN PLAN

SCALE :
 DATE : 07/21/04

DESIGNED BYVYX
 CHECKED BY JIF