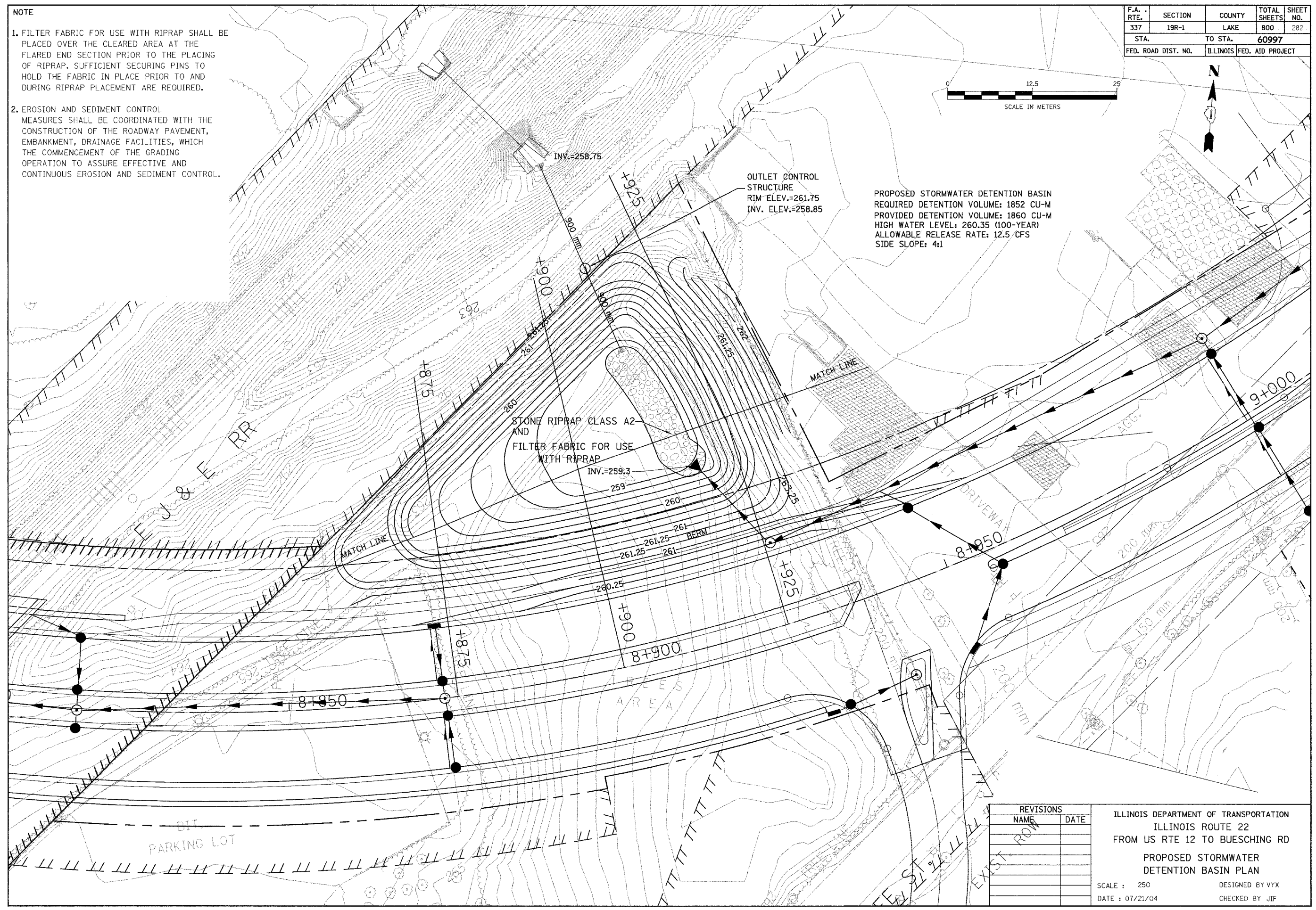
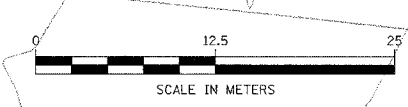


NOTE

1. FILTER FABRIC FOR USE WITH RIPRAP SHALL BE PLACED OVER THE CLEARED AREA AT THE FLARED END SECTION PRIOR TO THE PLACING OF RIPRAP. SUFFICIENT SECURING PINS TO HOLD THE FABRIC IN PLACE PRIOR TO AND DURING RIPRAP PLACEMENT ARE REQUIRED.
2. EROSION AND SEDIMENT CONTROL MEASURES SHALL BE COORDINATED WITH THE CONSTRUCTION OF THE ROADWAY PAVEMENT, EMBANKMENT, DRAINAGE FACILITIES, WHICH THE COMMENCEMENT OF THE GRADING OPERATION TO ASSURE EFFECTIVE AND CONTINUOUS EROSION AND SEDIMENT CONTROL.

F.A. RTE.	SECTION	COUNTY	TOTAL SHEETS	SHEET NO.
337	19R-1	LAKE	800	282
STA.		TO STA.		60997
FED. ROAD DIST. NO.		ILLINOIS FED. AID PROJECT		



PROPOSED STORMWATER DETENTION BASIN
 REQUIRED DETENTION VOLUME: 1852 CU-M
 PROVIDED DETENTION VOLUME: 1860 CU-M
 HIGH WATER LEVEL: 260.35 (100-YEAR)
 ALLOWABLE RELEASE RATE: 12.5 CFS
 SIDE SLOPE: 4:1

OUTLET CONTROL STRUCTURE
 RIM ELEV.=261.75
 INV. ELEV.=258.85

STONE RIPRAP CLASS A2 AND
 FILTER FABRIC FOR USE WITH RIPRAP
 INV.=259.3

REVISIONS	
NAME	DATE

ILLINOIS DEPARTMENT OF TRANSPORTATION
 ILLINOIS ROUTE 22
 FROM US RTE 12 TO BUESCHING RD
 PROPOSED STORMWATER
 DETENTION BASIN PLAN
 SCALE : 250
 DATE : 07/21/04
 DESIGNED BY VYX
 CHECKED BY JIF