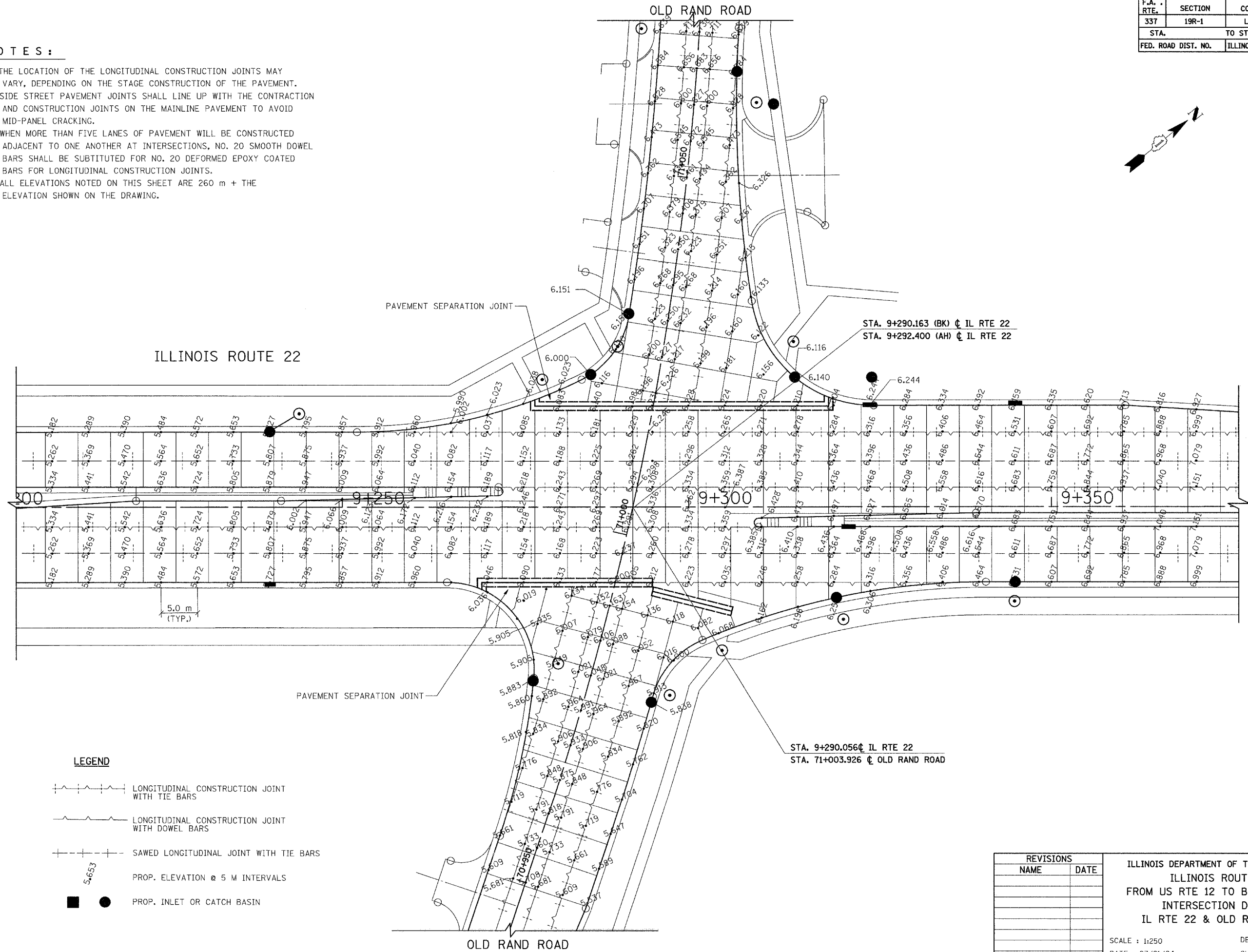
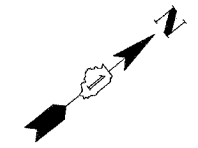


F.A. RTE.	SECTION	COUNTY	TOTAL SHEETS	SHEET NO.
337	19R-1	LAKE	800	344
STA.	TO STA.			
FED. ROAD DIST. NO.	ILLINOIS	FED. AID PROJECT		

60997

**NOTES :**

1. THE LOCATION OF THE LONGITUDINAL CONSTRUCTION JOINTS MAY VARY, DEPENDING ON THE STAGE CONSTRUCTION OF THE PAVEMENT.
2. SIDE STREET PAVEMENT JOINTS SHALL LINE UP WITH THE CONTRACTION AND CONSTRUCTION JOINTS ON THE MAINLINE PAVEMENT TO AVOID MID-PANEL CRACKING.
3. WHEN MORE THAN FIVE LANES OF PAVEMENT WILL BE CONSTRUCTED ADJACENT TO ONE ANOTHER AT INTERSECTIONS, NO. 20 SMOOTH DOWEL BARS SHALL BE SUBSTITUTED FOR NO. 20 DEFORMED EPOXY COATED BARS FOR LONGITUDINAL CONSTRUCTION JOINTS.
4. ALL ELEVATIONS NOTED ON THIS SHEET ARE 260 m + THE ELEVATION SHOWN ON THE DRAWING.



**LEGEND**

- LONGITUDINAL CONSTRUCTION JOINT WITH TIE BARS
- LONGITUDINAL CONSTRUCTION JOINT WITH DOWEL BARS
- SAWED LONGITUDINAL JOINT WITH TIE BARS
- PROP. ELEVATION @ 5 M INTERVALS
- PROP. INLET OR CATCH BASIN

REVISIONS	
NAME	DATE

ILLINOIS DEPARTMENT OF TRANSPORTATION  
 ILLINOIS ROUTE 22  
 FROM US RTE 12 TO BUESCHING RD  
 INTERSECTION DETAILS  
 IL RTE 22 & OLD RAND ROAD

SCALE : 1:250  
 DATE : 07/21/04  
 DESIGNED BY VAP  
 CHECKED BY NAP