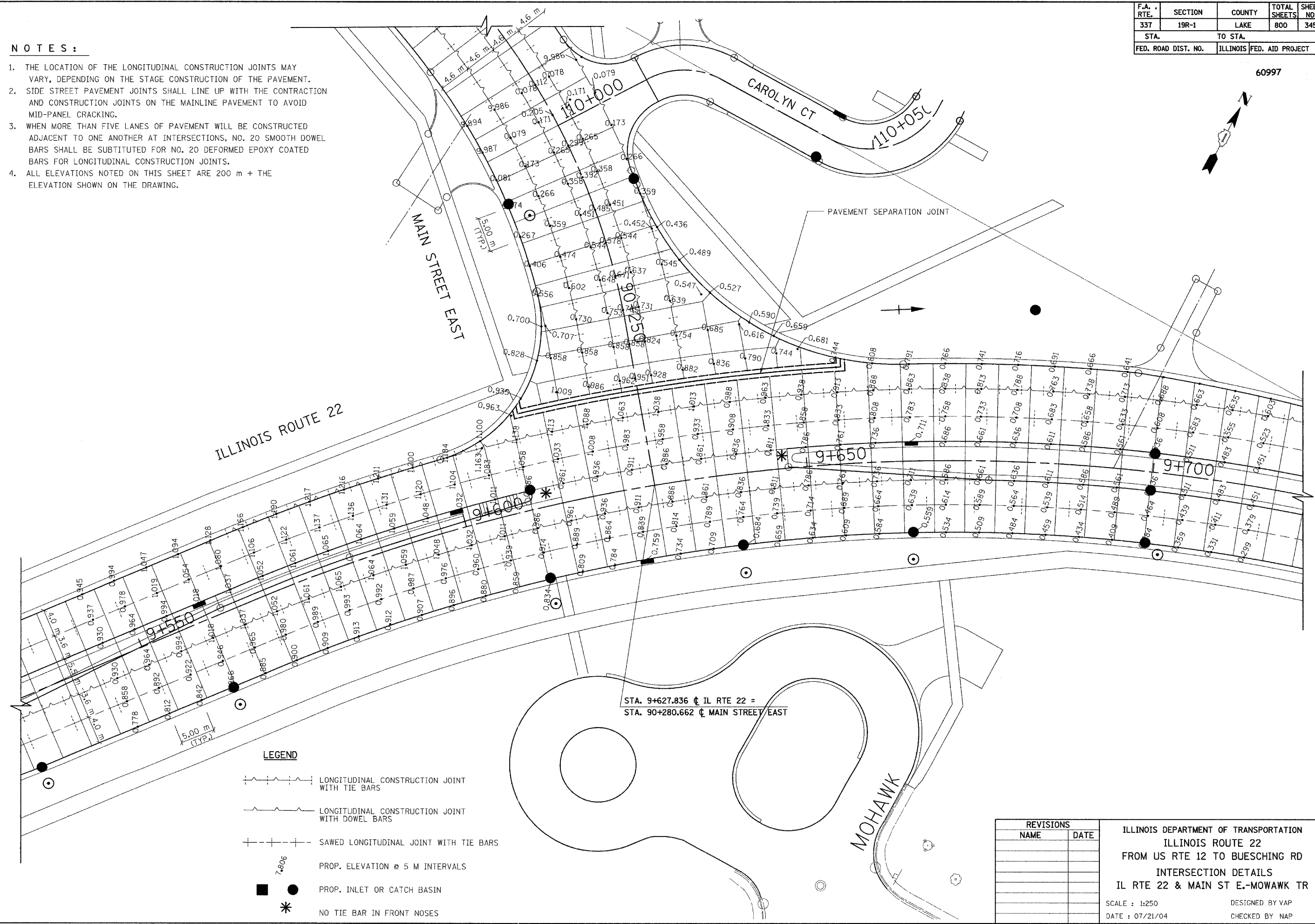


F.A. RTE.	SECTION	COUNTY	TOTAL SHEETS	SHEET NO.
337	19R-1	LAKE	800	345
STA.		TO STA.		
FED. ROAD DIST. NO.		ILLINOIS	FED. AID PROJECT	

60997

NOTES :

1. THE LOCATION OF THE LONGITUDINAL CONSTRUCTION JOINTS MAY VARY, DEPENDING ON THE STAGE CONSTRUCTION OF THE PAVEMENT.
2. SIDE STREET PAVEMENT JOINTS SHALL LINE UP WITH THE CONTRACTION AND CONSTRUCTION JOINTS ON THE MAINLINE PAVEMENT TO AVOID MID-PANEL CRACKING.
3. WHEN MORE THAN FIVE LANES OF PAVEMENT WILL BE CONSTRUCTED ADJACENT TO ONE ANOTHER AT INTERSECTIONS, NO. 20 SMOOTH DOWEL BARS SHALL BE SUBSTITUTED FOR NO. 20 DEFORMED EPOXY COATED BARS FOR LONGITUDINAL CONSTRUCTION JOINTS.
4. ALL ELEVATIONS NOTED ON THIS SHEET ARE 200 m + THE ELEVATION SHOWN ON THE DRAWING.



ILLINOIS ROUTE 22

MAIN STREET EAST

CAROLYN CT

MOHAWK

STA. 9+627.836 ∇ IL RTE 22 =
STA. 90+280.662 ∇ MAIN STREET EAST

LEGEND

- LONGITUDINAL CONSTRUCTION JOINT WITH TIE BARS
- LONGITUDINAL CONSTRUCTION JOINT WITH DOWEL BARS
- SAWED LONGITUDINAL JOINT WITH TIE BARS
- PROP. ELEVATION @ 5 M INTERVALS
- PROP. INLET OR CATCH BASIN
- NO TIE BAR IN FRONT NOSES

REVISIONS	
NAME	DATE

ILLINOIS DEPARTMENT OF TRANSPORTATION
ILLINOIS ROUTE 22
FROM US RTE 12 TO BUESCHING RD
INTERSECTION DETAILS
IL RTE 22 & MAIN ST E.-MOWAWK TR

SCALE : 1:250
DATE : 07/21/04

DESIGNED BY VAP
CHECKED BY NAP