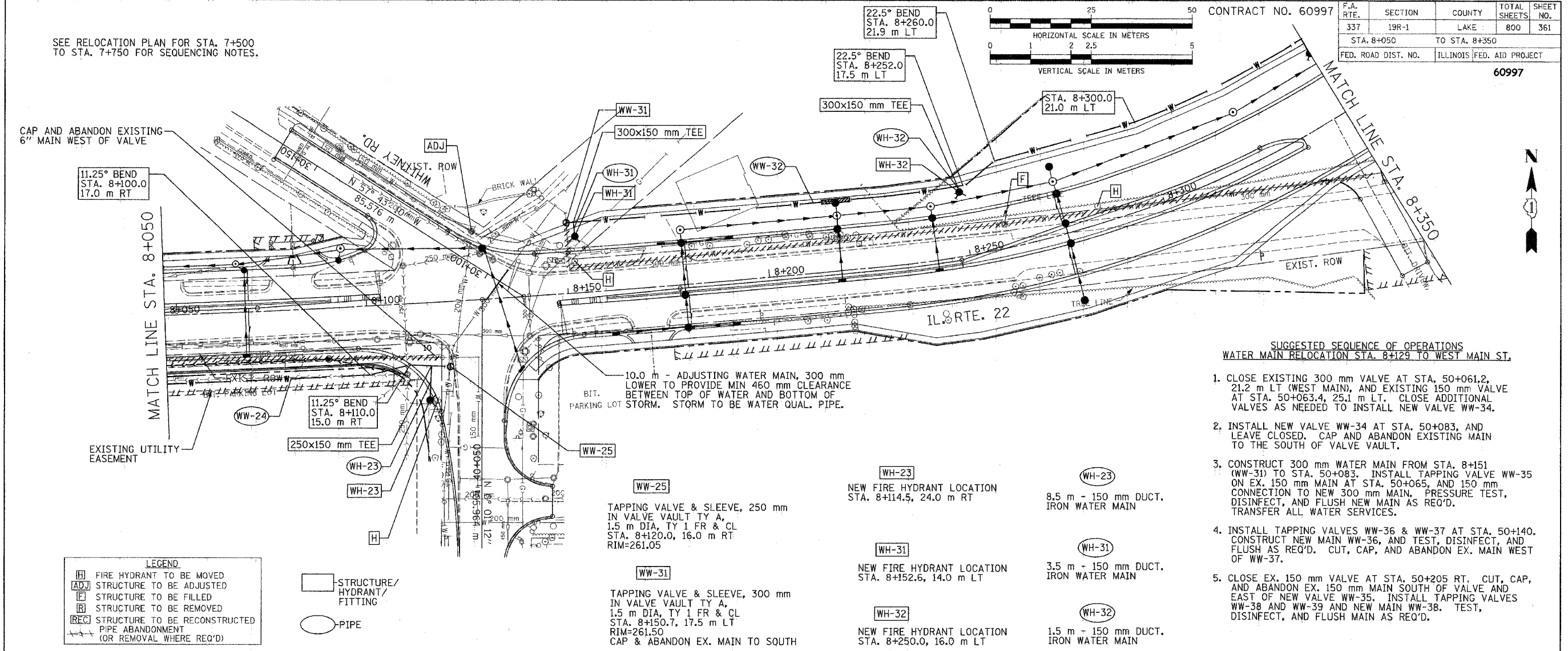


DATE	
BY	
FINAL SURVEY	
SURVEY PLOTTED	
NOTE BOOK TEMPLATE	
NO. AREAS CHECKED	

DATE	
BY	
FINAL SURVEY	
SURVEY PLOTTED	
NOTE BOOK TEMPLATE	
NO. AREAS CHECKED	

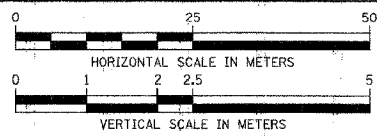


SEE RELOCATION PLAN FOR STA. 7+500 TO STA. 7+750 FOR SEQUENCING NOTES.

CAP AND ABANDON EXISTING 6" MAIN WEST OF VALVE

**LEGEND**

(H)	FIRE HYDRANT TO BE MOVED
(ADJ)	STRUCTURE TO BE ADJUSTED
(F)	STRUCTURE TO BE FILLED
(R)	STRUCTURE TO BE REMOVED
(REC)	STRUCTURE TO BE RECONSTRUCTED
(---)	PIPE ABANDONMENT (OR REMOVAL WHERE REQ'D)
(□)	STRUCTURE/HYDRANT/FITTING
(○)	PIPE



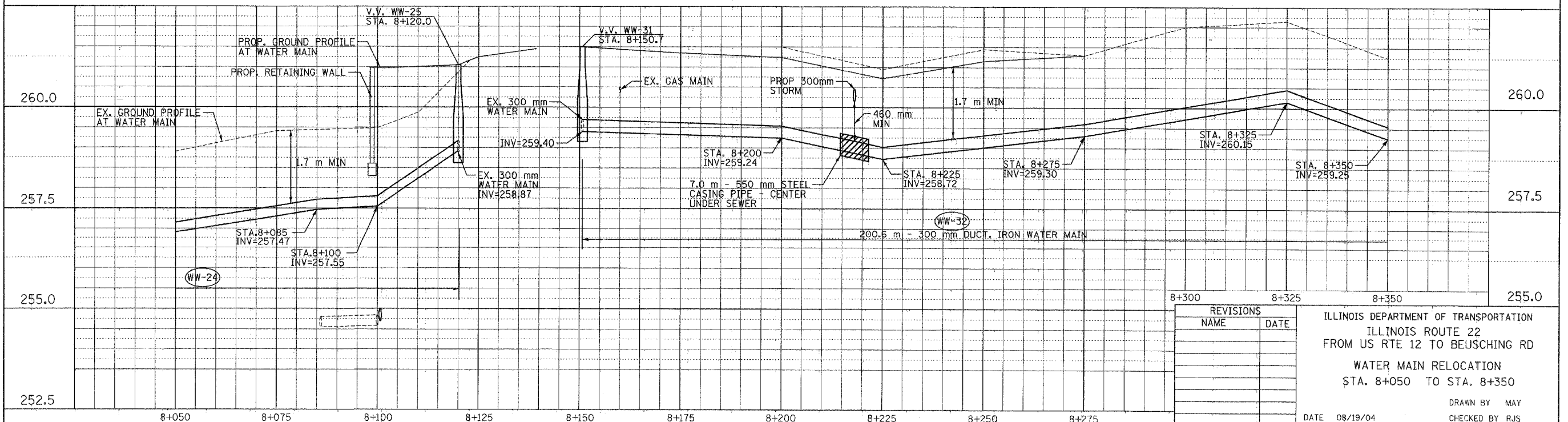
CONTRACT NO. 60997

F.A. RTE.	SECTION	COUNTY	TOTAL SHEETS	SHEET NO.
337	19R-1	LAKE	800	361
STA. 8+050	TO STA. 8+350			
FED. ROAD DIST. NO.	ILLINOIS	FED. AID PROJECT		

60997

**SUGGESTED SEQUENCE OF OPERATIONS**  
WATER MAIN RELOCATION STA. 8+129 TO WEST MAIN ST.

1. CLOSE EXISTING 300 mm VALVE AT STA. 50+061.2, 21.2 m LT (WEST MAIN), AND EXISTING 150 mm VALVE AT STA. 50+063.4, 25.1 m LT. CLOSE ADDITIONAL VALVES AS NEEDED TO INSTALL NEW VALVE WW-34.
2. INSTALL NEW VALVE WW-34 AT STA. 50+083, AND LEAVE CLOSED. CAP AND ABANDON EXISTING MAIN TO THE SOUTH OF VALVE VAULT.
3. CONSTRUCT 300 mm WATER MAIN FROM STA. 8+151 (WW-31) TO STA. 50+083. INSTALL TAPPING VALVE WW-35 ON EX. 150 mm MAIN AT STA. 50+065, AND 150 mm CONNECTION TO NEW 300 mm MAIN. PRESSURE TEST, DISINFECT, AND FLUSH NEW MAIN AS REQ'D. TRANSFER ALL WATER SERVICES.
4. INSTALL TAPPING VALVES WW-36 & WW-37 AT STA. 50+140. CONSTRUCT NEW MAIN WW-36, AND TEST, DISINFECT, AND FLUSH AS REQ'D. CUT, CAP, AND ABANDON EX. MAIN WEST OF WW-37.
5. CLOSE EX. 150 mm VALVE AT STA. 50+205 RT. CUT, CAP, AND ABANDON EX. 150 mm MAIN SOUTH OF VALVE AND EAST OF NEW VALVE WW-35. INSTALL TAPPING VALVES WW-38 AND WW-39 AND NEW MAIN WW-38. TEST, DISINFECT, AND FLUSH MAIN AS REQ'D.



REVISIONS	
NAME	DATE

ILLINOIS DEPARTMENT OF TRANSPORTATION  
ILLINOIS ROUTE 22  
FROM US RTE 12 TO BEUSCHING RD  
WATER MAIN RELOCATION  
STA. 8+050 TO STA. 8+350

DATE 08/19/04

DRAWN BY MAY  
CHECKED BY RJS