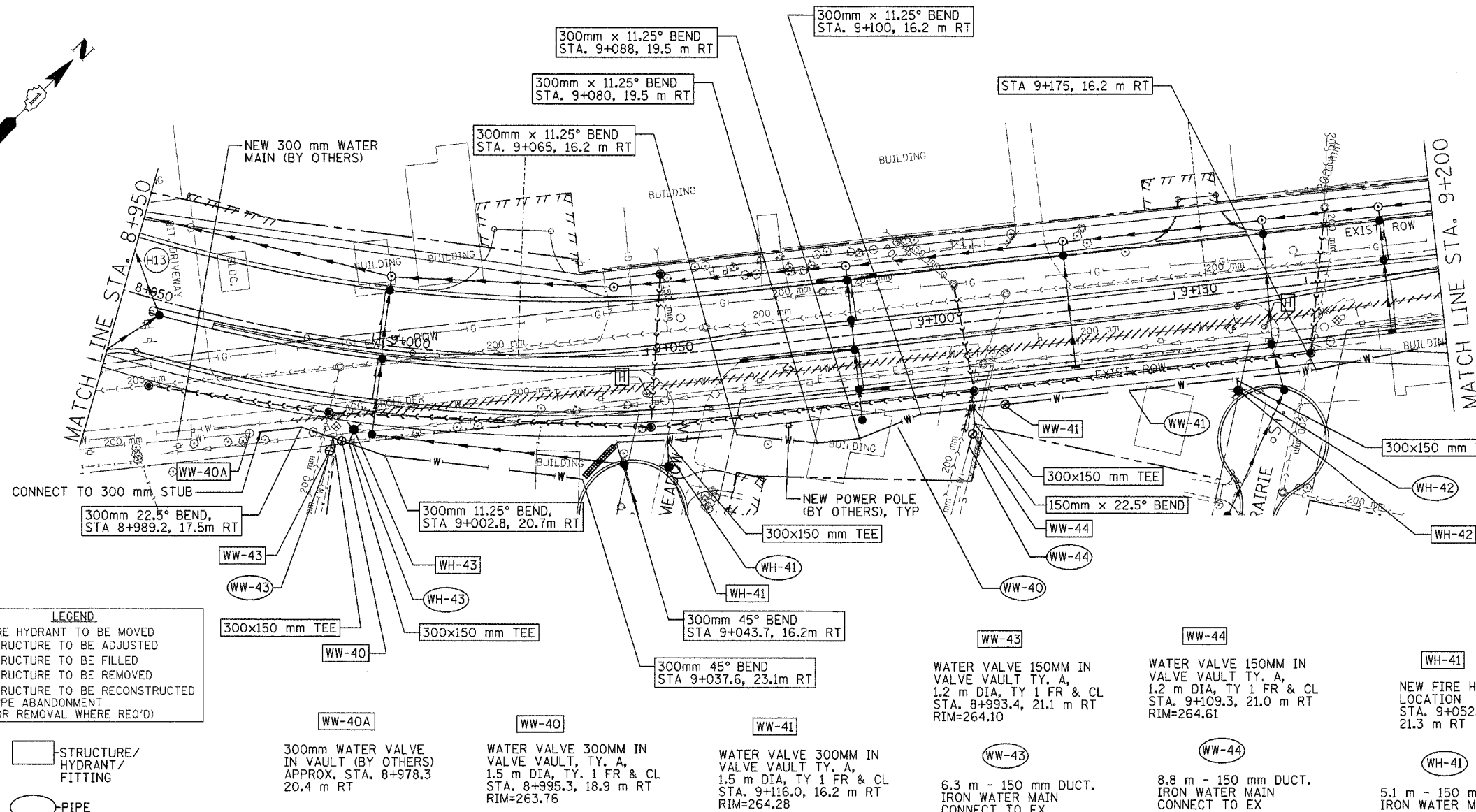
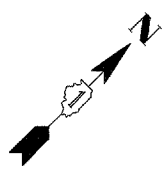
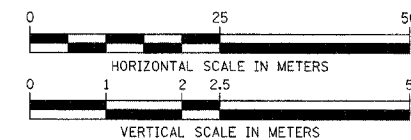


F.A. RTE.	SECTION	COUNTY	TOTAL SHEETS	SHEET NO.
337	19R-1	LAKE	800	363
STA. 8+950		TO STA. 9+200		
FED. ROAD DIST. NO.		ILLINOIS FED. AID PROJECT		



- SUGGESTED SEQUENCE OF OPERATIONS**  
 STA. 8+980 TO 9+290 (IL RTE 22)  
 STA. 70+900 TO STA. 71+150 (OLD RAND RD)
- CLOSE EXISTING VALVES AS NECESSARY TO INSTALL VALVES WW-43, WW-44, WW-46 AND WW-74. NEW VALVES TO REMAIN CLOSED FOLLOWING INSTALLATION.
  - INSTALL NEW WATER MAIN ALONG RT. 22 FROM STUB AT STA. 8+980 TO OLD RAND ROAD, AND ALONG OLD RAND ROAD FROM STA. 70+900 (WW-71) TO STA. 71+092 (WW-73), INCLUDING ALL VALVES.
  - PRESSURE TEST, DISINFECT, AND FLUSH NEW MAIN AS REQUIRED. TRANSFER WATER SERVICES, AND OPEN VALVES WW-43, WW-44, WW-46, AND WW-74.
  - CLOSE EXISTING VALVES AS NECESSARY TO CONNECT TO EXISTING MAINS AT STA. 71+096 & 71+104. TEST, DISINFECT, AND FLUSH AS REQUIRED. CAP AND ABANDON EXISTING MAIN AS INDICATED.
  - CLOSE EXISTING VALVES AS REQUIRED TO INSTALL WATER MAIN WW-76. TEST, DISINFECT, AND FLUSH AS REQUIRED.

**LEGEND**

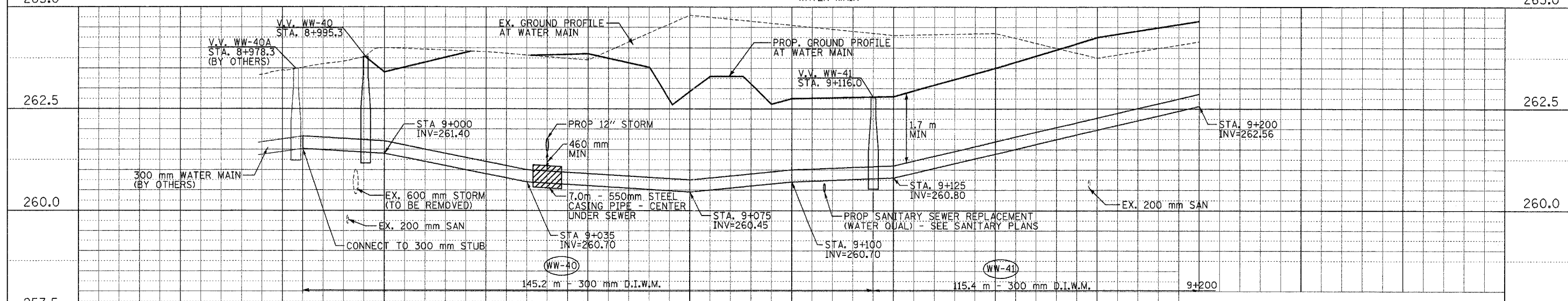
[Symbol]	FIRE HYDRANT TO BE MOVED
[Symbol]	STRUCTURE TO BE ADJUSTED
[Symbol]	STRUCTURE TO BE FILLED
[Symbol]	STRUCTURE TO BE REMOVED
[Symbol]	STRUCTURE TO BE RECONSTRUCTED
[Symbol]	PIPE ABANDONMENT (OR REMOVAL WHERE REQ'D)

[Symbol]	STRUCTURE/HYDRANT/FITTING
[Symbol]	PIPE

WW-40A	300mm WATER VALVE IN VAULT (BY OTHERS) APPROX. STA. 8+978.3 20.4 m RT	WW-40	WATER VALVE 300MM IN VALVE VAULT, TY. A, 1.5 m DIA, TY. 1 FR & CL STA. 8+995.3, 18.9 m RT RIM=263.76	WW-41	WATER VALVE 300MM IN VALVE VAULT TY. A, 1.5 m DIA, TY. 1 FR & CL STA. 9+116.0, 16.2 m RT RIM=264.28	WW-43	WATER VALVE 150MM IN VALVE VAULT TY. A, 1.2 m DIA, TY. 1 FR & CL STA. 8+993.4, 21.1 m RT RIM=264.10	WW-44	WATER VALVE 150MM IN VALVE VAULT TY. A, 1.2 m DIA, TY. 1 FR & CL STA. 9+109.3, 21.0 m RT RIM=264.61	WH-41	NEW FIRE HYDRANT LOCATION STA. 9+052.8, 21.3 m RT	WH-42	NEW FIRE HYDRANT LOCATION STA. 9+160.0, 18.4 m RT	WH-43	FIRE HYDRANT W/ AUXILIARY VALVE & VALVE BOX STA. 8+997.5 16.1 m RT
							6.3 m - 150 mm DUCT. IRON WATER MAIN CONNECT TO EX WATER MAIN		8.8 m - 150 mm DUCT. IRON WATER MAIN CONNECT TO EX WATER MAIN		5.1 m - 150 mm DUCT. IRON WATER MAIN		2.2 m - 150 mm DUCT. IRON WATER MAIN		2.8 m - 150 mm DUCT. IRON WATER MAIN

BY	DATE
SURVEYED	
PLOTTED	
NOTE BOOK	
TEMPLATE	
AREAS	
CHECKED	
NO.	

BY	DATE
ORIGINAL SURVEYED	
PLOTTED	
NOTE BOOK	
TEMPLATE	
AREAS	
CHECKED	
NO.	



**REVISIONS**

NAME	DATE
Misc.	11/24/04

ILLINOIS DEPARTMENT OF TRANSPORTATION  
 ILLINOIS ROUTE 22  
 FROM US RTE 12 TO BEUSCHING RD  
**WATER MAIN RELOCATION**  
 STA. 8+950 TO STA. 9+200

DATE 08/19/04  
 DRAWN BY MAY  
 CHECKED BY RJS