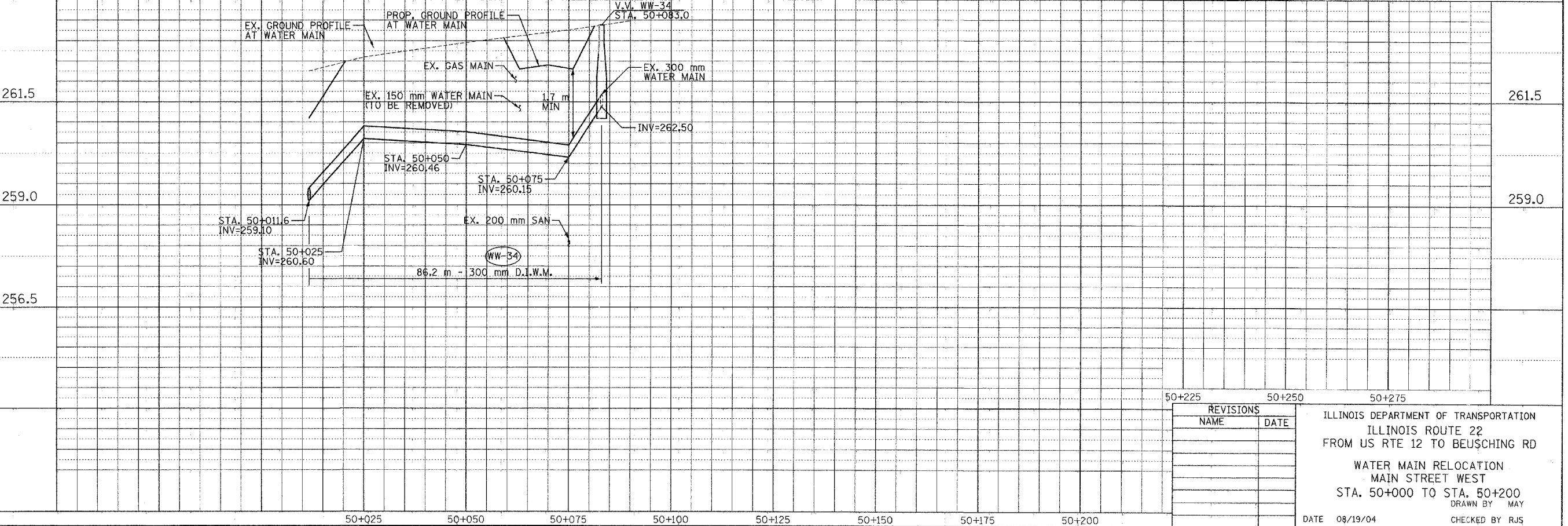
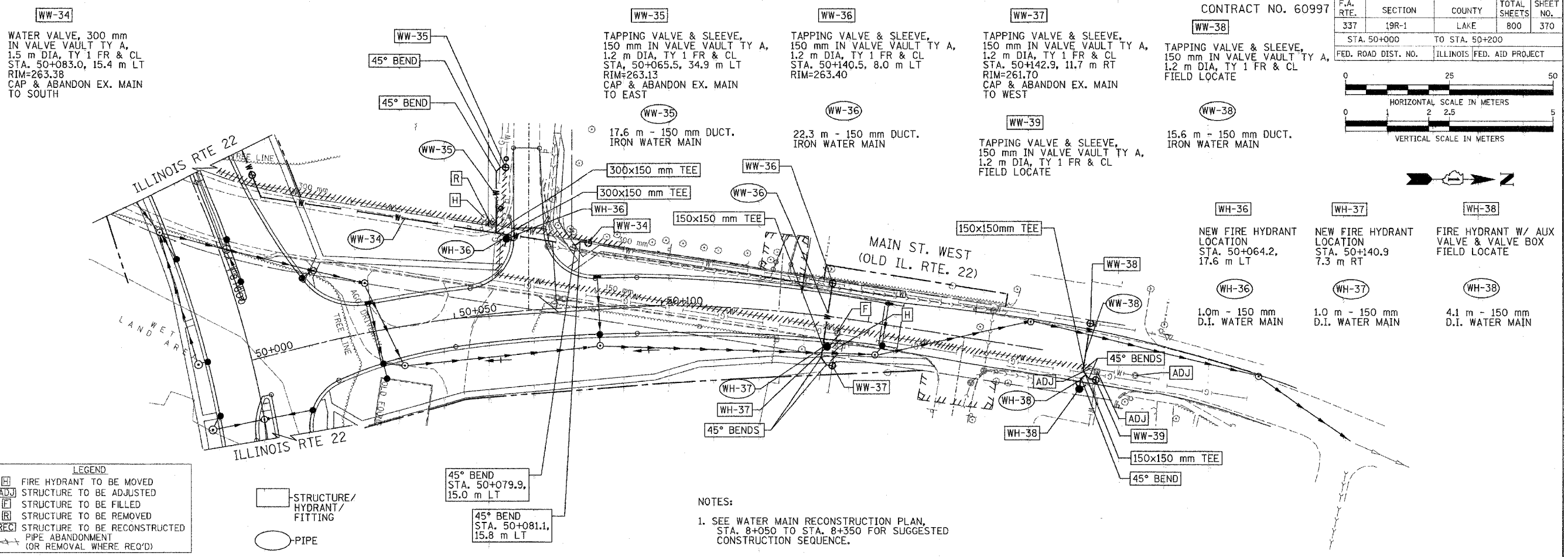


FINAL SURVEY PLOTTED	DATE
SURVEY PLOTTED	BY
NOTE BOOK TEMPLATE	
AREAS CHECKED	
NO.	

ORIGINAL SURVEY PLOTTED	DATE
SURVEY PLOTTED	BY
NOTE BOOK TEMPLATE	
AREAS CHECKED	
NO.	



REVISIONS	
NAME	DATE

ILLINOIS DEPARTMENT OF TRANSPORTATION
ILLINOIS ROUTE 22
FROM US RTE 12 TO BEUSCHING RD

WATER MAIN RELOCATION
MAIN STREET WEST
STA. 50+000 TO STA. 50+200

DRAWN BY MAY
CHECKED BY RJS

DATE 08/19/04