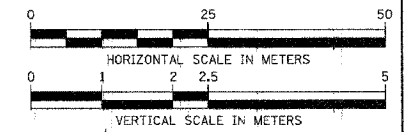


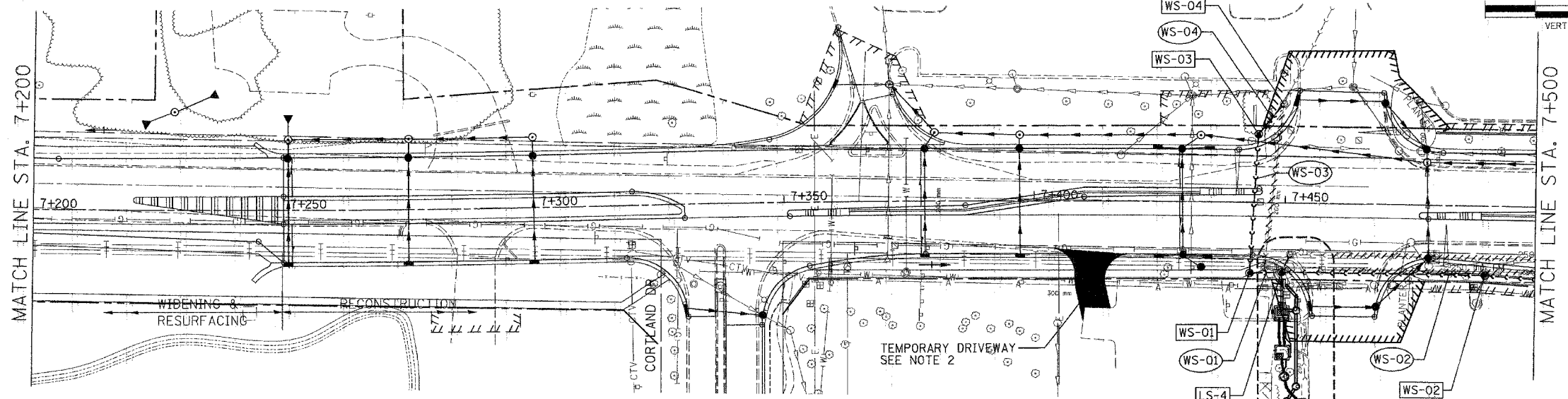
F.A. RTE.	SECTION	COUNTY	TOTAL SHEETS	SHEET NO.
337	19R-1	LAKE	800	377
STA. 7+200		TO STA. 7+500		
FED. ROAD DIST. NO.		ILLINOIS FED. AID PROJECT		

NOTES:

- SEE LIFT STATION PLAN FOR SEQUENCING OF WORK IN THIS AREA.
- CONTRACTOR SHALL PROVIDE AND MAINTAIN A 6 m WIDE TEMPORARY GRAVEL ACCESS DRIVE AT THE WEST SIDE OF THE PARKING LOT DURING CONSTRUCTION OF THE LIFT STATION. THIS WORK SHALL BE PAID FOR AS AGGREGATE SURFACE COURSE, TY. B. THE AGGREGATE SHALL BE REMOVED AND THE DISTURBED AREA SHALL BE RESTORED WITH 100 mm TOPSOIL AND SOD FOLLOWING THE COMPLETION OF THE LIFT STATION.



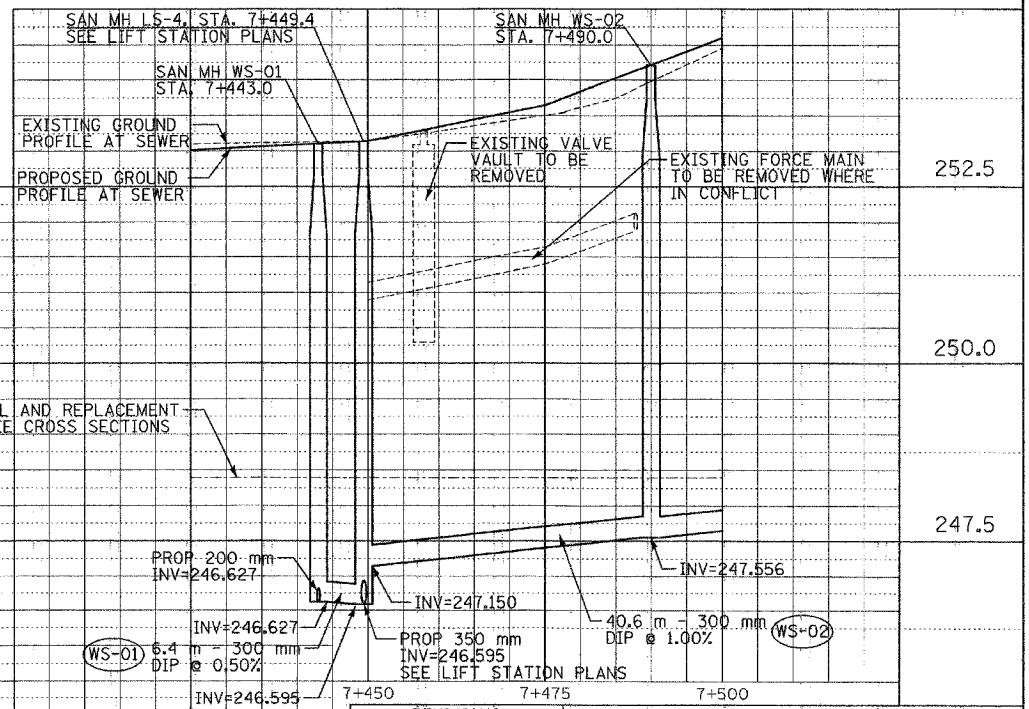
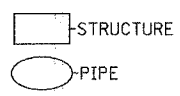
BY	DATE
FINAL SURVEYED	
SURVEY PLOTTED	
NOTE BOOK TEMPLATE	
AREAS CHECKED	
NO.	



LEGEND

ADJ	STRUCTURE TO BE ADJUSTED
F	STRUCTURE TO BE FILLED
R	STRUCTURE TO BE REMOVED
REC	STRUCTURE TO BE RECONSTRUCTED
	PIPE ABANDONMENT (OR REMOVAL WHERE REQ'D)

- WS-01**
SAN. MH 1.2M DIA.
W/ FR, LID & CHIMNEY SEAL
STA. 7+443.0,
14.0 m RT
RIM=253.11
INV(N)=246.627
INV(E)=246.627
- WS-02**
SAN. MH 1.2M DIA.
W/ FR, LID & CHIMNEY SEAL
STA. 7+490.0,
13.7 m RT
RIM=254.21
INV(E,W)=247.556
- WS-03**
DROP SAN. MH 1.2M DIA.
W/ FR, LID & CHIMNEY SEAL
STA. 7+444.5,
13.5 m LT
RIM=252.70
INV(N)=250.119
(DROP CONN)
INV(S)=246.845
- WS-04**
EX. SAN. MH
STA. 7+449.5
19.6 m LT
RIM=253.155 (EX)
INV(N)=250.208 (EX)
INV(SW)=250.198 (PROP)
PLUG AND ABANDON
EX. SEWER TO SOUTH-
SEE LIFT STATION NOTES



BY	DATE
ORIGINAL SURVEYED	
SURVEY PLOTTED	
NOTE BOOK TEMPLATE	
AREAS CHECKED	
NO.	

REVISIONS	
NAME	DATE

ILLINOIS DEPARTMENT OF TRANSPORTATION
ILLINOIS ROUTE 22
FROM US RTE 12 TO BEUSCHING RD
SANITARY SEWER RELOCATION
STA. 7+200 TO STA. 7+500
DRAWN BY MAY
CHECKED BY RJS
DATE 08/19/04