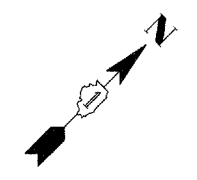
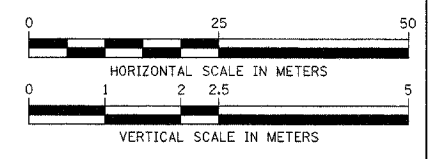
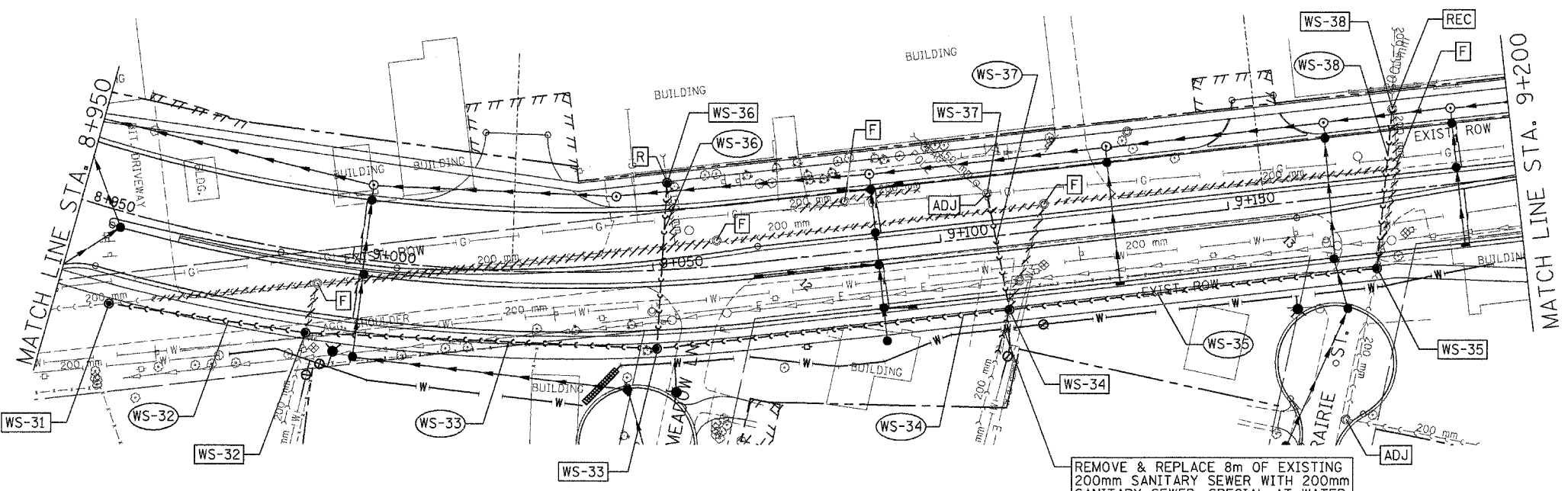


F.A. RTE.	SECTION	COUNTY	TOTAL SHEETS	SHEET NO.
337	19R-1	LAKE	800	381
STA. 8+950		TO STA. 9+200		
FED. ROAD DIST. NO.		ILLINOIS FED. AID PROJECT		



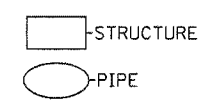
BY	DATE

FINAL SURVEY PLOTTED	NO.
NOTE BOOK TEMPLATE	
AREAS CHECKED	



LEGEND

- [ADJ] STRUCTURE TO BE ADJUSTED
- [F] STRUCTURE TO BE FILLED
- [R] STRUCTURE TO BE REMOVED
- [REC] STRUCTURE TO BE RECONSTRUCTED
- PIPE ABANDONMENT (OR REMOVAL WHERE REQ'D)



WS-31
 SAN. MH 1.2M DIA.
 W/ FR, LID & CHIMNEY SEAL
 STA. 8+959.0,
 16.0 m RT
 RIM=262.84
 INV(W)=259.495 (EX)
 INV(E)=259.520 (PROP)
 PLUG AND ABANDON SEWER TO NORTH

WS-32
 SAN. MH 1.2M DIA.
 W/ FR, LID & CHIMNEY SEAL
 STA. 8+992.1,
 14.0 m RT
 RIM=263.07
 INV(S)=259.667 (EX)
 INV(E,W)=259.657 (PROP)
 EX. SEWER TO NORTH

WS-33
 SAN. MH 1.2M DIA.
 W/ FR, LID & CHIMNEY SEAL
 STA. 9+050.0,
 13.6 m RT
 RIM=263.40
 INV(N)=260.054
 INV(E,W)=259.901

WS-34
 SAN. MH 1.2M DIA.
 W/ FR, LID & CHIMNEY SEAL
 STA. 9+110.5,
 13.0 m RT
 RIM=263.01
 INV(N)=260.315 (PROP)
 INV(S)=260.443 (EX)
 INV(E,W)=260.146 (PROP)
 PLUG AND ABANDON EX. SEWER TO NORTH

WS-35
 SAN. MH 1.2M DIA.
 W/ FR, LID & CHIMNEY SEAL
 STA. 9+174.4,
 13.0 m RT
 RIM=264.38
 INV(N)=260.992 (PROP)
 INV(S)=260.495 (EX)
 INV(E,W)=260.402 (PROP)
 PLUG AND ABANDON EX. SEWER TO NORTH

WS-36
 DROP SAN. MH 1.2M DIA.
 W/ FR, LID & CHIMNEY SEAL
 STA. 9+053.4, 15.0 m LT
 RIM=262.94
 INV(N)=261.220 (EX)
 INV(S)=260.342 (EX/PROP)
 REMOVE AND REPLACE EX. SAN MH AT SAME LOCATION. PLUG AND ABANDON EX. 150 mm OUTLET.

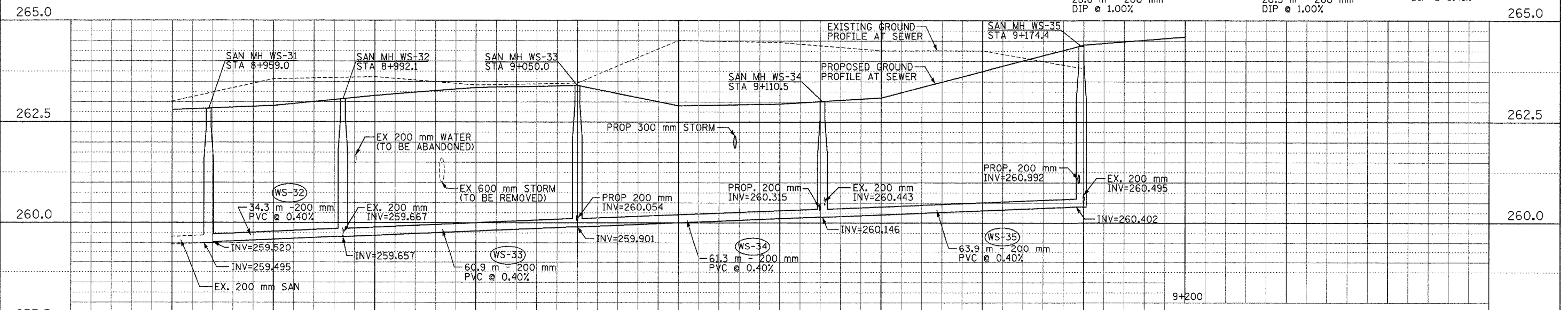
WS-37
 EX. SAN. MH
 STA. 9+108.9,
 7.4 m LT
 RIM=262.90 (PROP-ADJ)
 INV(N)=260.520 (EX)
 INV(S)=260.520 (EX/PROP)
 REMOVE & REPLACE EX. 150 mm OUTLET SEWER

WS-38
 EX. SAN. MH
 STA. 9+180.1,
 14.0 m LT
 RIM=264.45 (PROP-REC)
 INV(N)=262.79 (EX)
 INV(S)=262.76 (EX/PROP)
 PLUG & ABANDON EX. 200 mm OUTLET SEWER

WS-36
 28.8 m - 200 mm
 DIP @ 1.00%

WS-37
 20.5 m - 200 mm
 DIP @ 1.00%

WS-38
 27.6 m - 200 mm
 DIP @ 6.41%



REVISIONS	
NAME	DATE
Misc.	11/24/04

ILLINOIS DEPARTMENT OF TRANSPORTATION
 ILLINOIS ROUTE 22
 FROM US RTE 12 TO BEUSCHING RD
 SANITARY SEWER RELOCATION
 STA. 8+950 TO STA. 9+200
 DATE 08/19/04
 DRAWN BY MAY
 CHECKED BY RJS