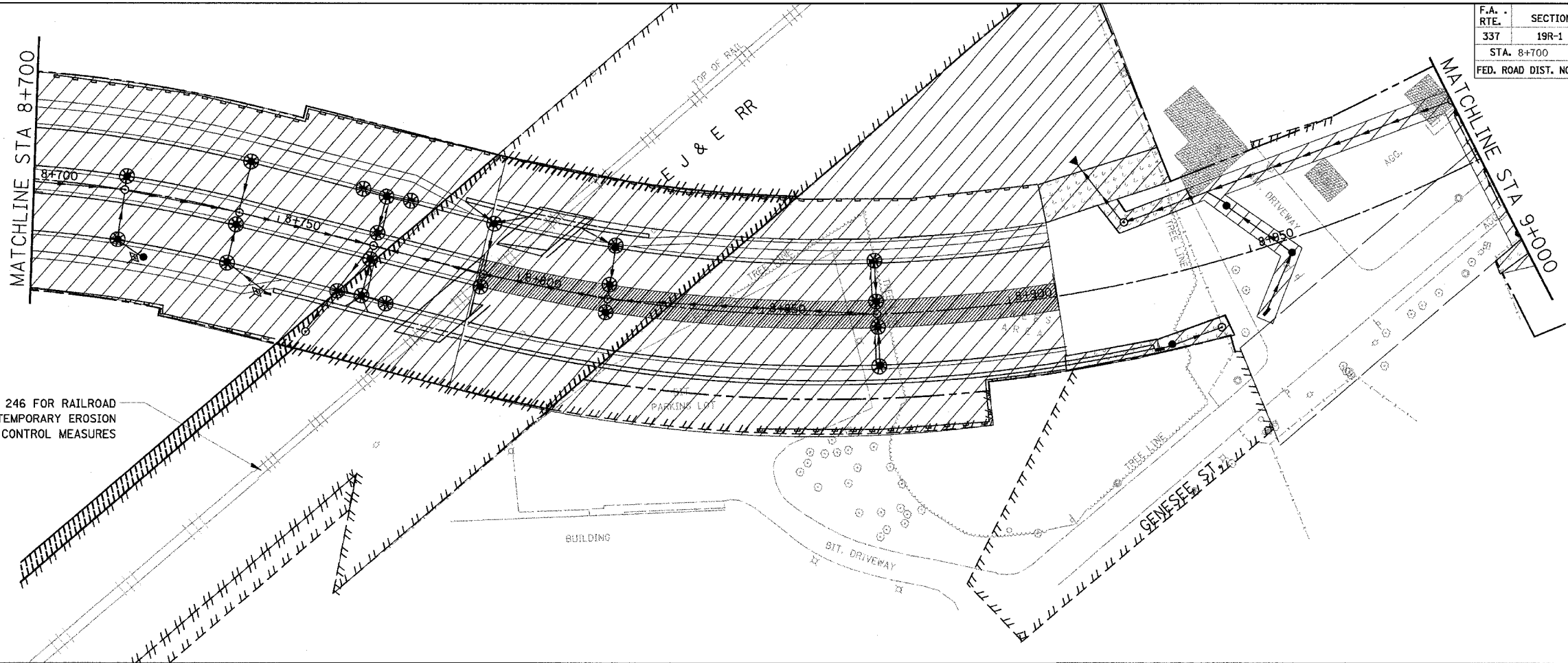
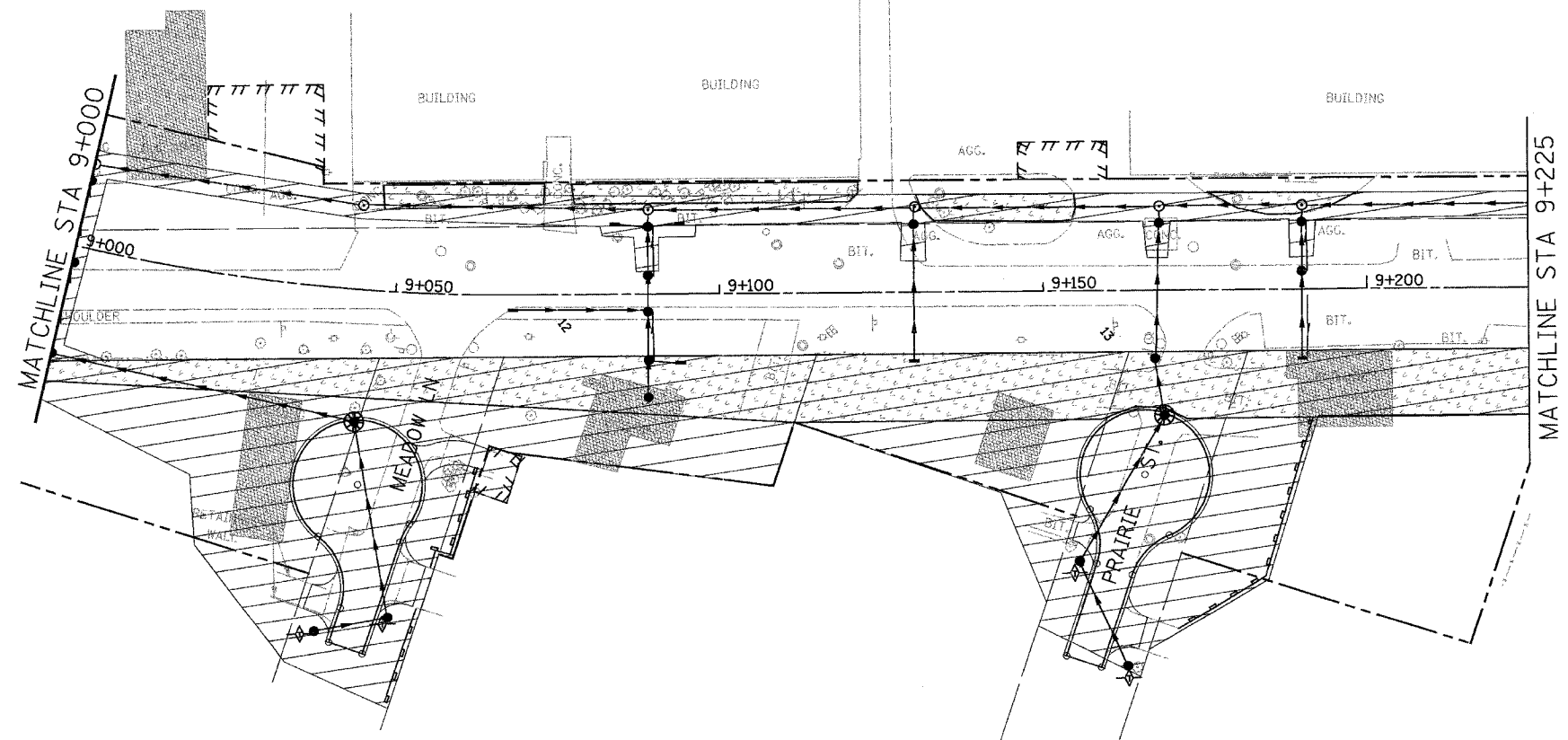


F.A. RTE.	SECTION	COUNTY	TOTAL SHEETS	SHEET NO.
337	19R-1	LAKE	800	435
STA. 8+700		TO STA. 9+225		
FED. ROAD DIST. NO.		ILLINOIS FED. AID PROJECT		

#60997

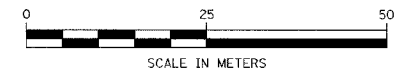


SEE SHEETS 245 & 246 FOR RAILROAD RUNAROUND TEMPORARY EROSION CONTROL MEASURES



LEGEND:

- DRAINAGE STRUCTURE INLET FILTER
- INLET AND PIPE PROTECTION
- PERIMETER EROSION BARRIER
- TEMPORARY EROSION CONTROL SEEDING
- TEMPORARY DITCH CHECK
- DIVERSION CHANNEL
- SLOPE DRAIN



REVISIONS	
NAME	DATE
REVISED DITCH CHECKS	11/24/04

ILLINOIS DEPARTMENT OF TRANSPORTATION
 ILLINOIS ROUTE 22
 FROM US RTE 12 TO BUESCHING RD
 TEMPORARY EROSION CONTROL PLAN
 STA. 8+700 TO STA. 9+225
 STAGE 1A & 1B
 DRAWN BY RLS
 CHECKED BY MBF
 DATE 7/21/04