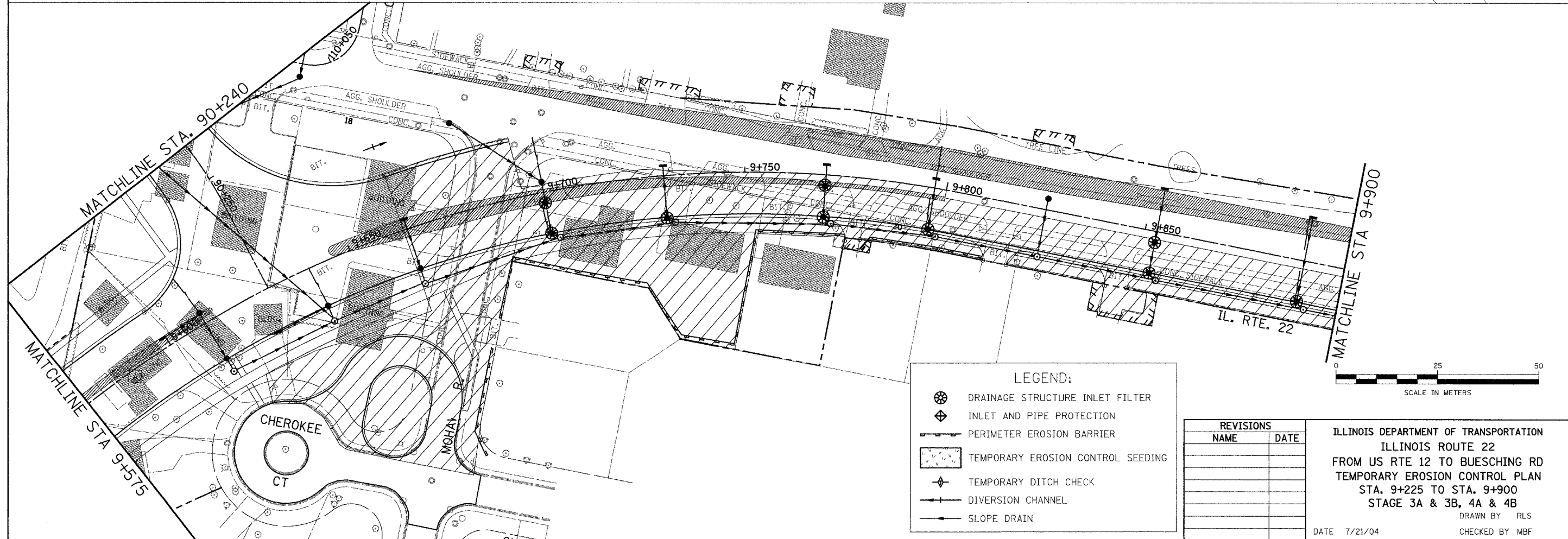
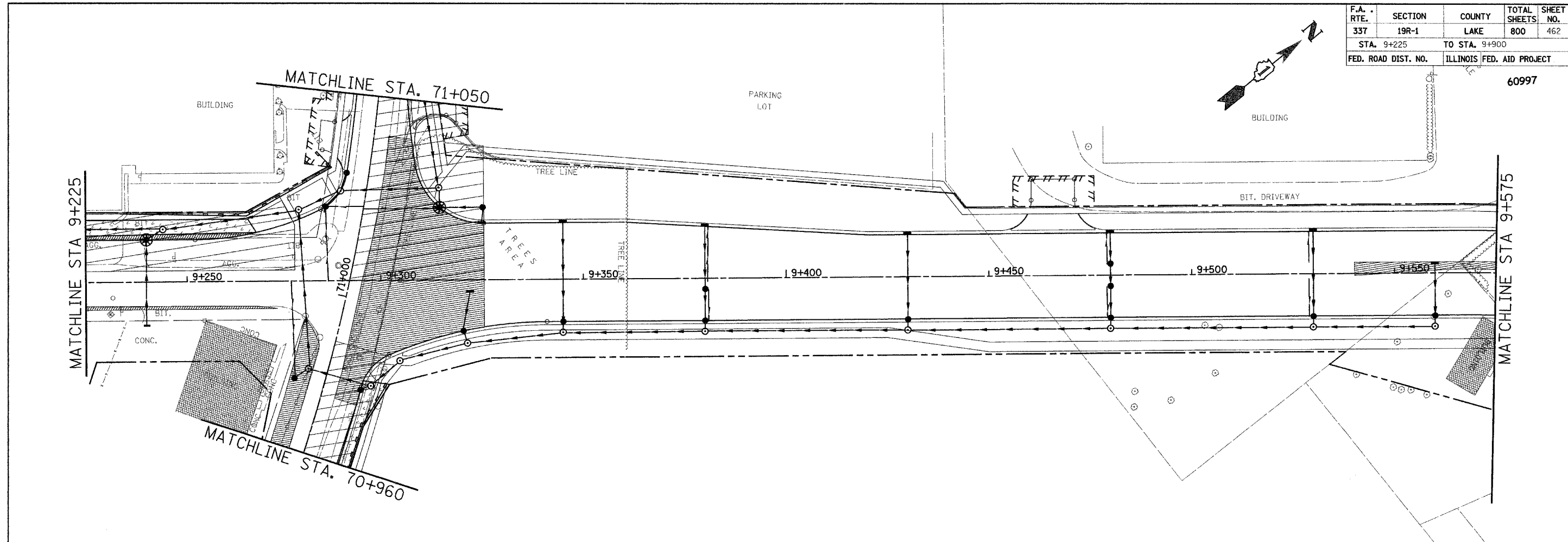


F.A. RTE.	SECTION	COUNTY	TOTAL SHEETS	SHEET NO.
337	19R-1	LAKE	800	462
STA. 9+225	TO STA. 9+900			
FED. ROAD DIST. NO.	ILLINOIS	FED. AID PROJECT		

60997



LEGEND:

- DRAINAGE STRUCTURE INLET FILTER
- INLET AND PIPE PROTECTION
- PERIMETER EROSION BARRIER
- TEMPORARY EROSION CONTROL SEEDING
- TEMPORARY DITCH CHECK
- DIVERSION CHANNEL
- SLOPE DRAIN

REVISIONS	
NAME	DATE

ILLINOIS DEPARTMENT OF TRANSPORTATION  
 ILLINOIS ROUTE 22  
 FROM US RTE 12 TO BUESCHING RD  
 TEMPORARY EROSION CONTROL PLAN  
 STA. 9+225 TO STA. 9+900  
 STAGE 3A & 3B, 4A & 4B  
 DRAWN BY RLS  
 CHECKED BY MBF  
 DATE 7/21/04