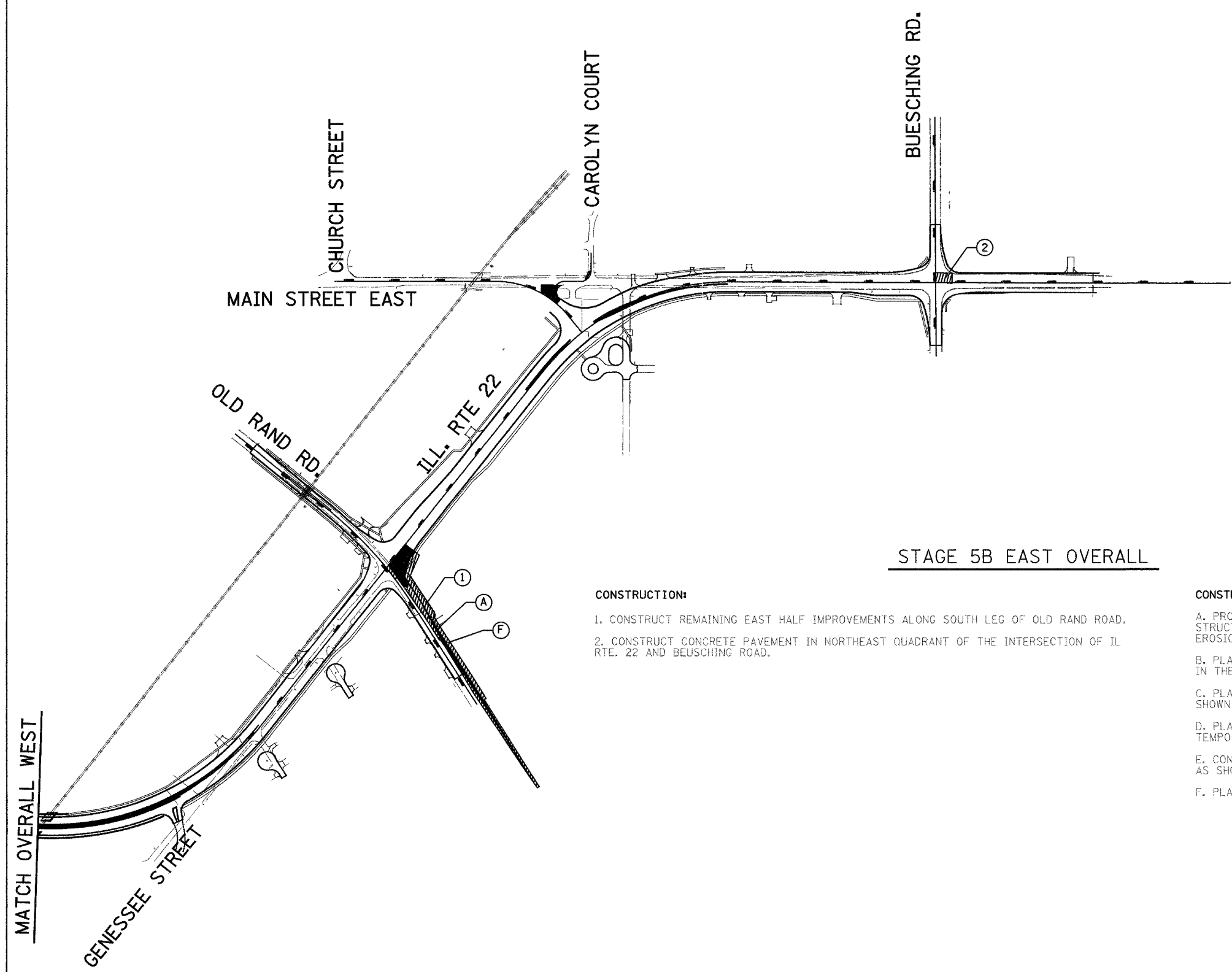
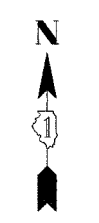


F.A. RTE.	SECTION	COUNTY	TOTAL SHEETS	SHEET NO.
337	19R-1	LAKE	800	489
STA.		TO STA.		
FED. ROAD DIST. NO.		ILLINOIS	FED. AID PROJECT	

60997



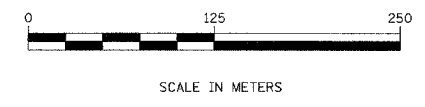
STAGE 5B EAST OVERALL

CONSTRUCTION:

1. CONSTRUCT REMAINING EAST HALF IMPROVEMENTS ALONG SOUTH LEG OF OLD RAND ROAD.
2. CONSTRUCT CONCRETE PAVEMENT IN NORTHEAST QUADRANT OF THE INTERSECTION OF IL RTE. 22 AND BUESCHING ROAD.

CONSTRUCTION STABILIZATION PRACTICES:

- A. PROVIDE INLET AND PIPE PROTECTION AND DRAINAGE STRUCTURE INLET FILTERS AS SHOWN IN THE TEMPORARY EROSION CONTROL PLANS
- B. PLACE PERIMETER EROSION BARRIERS AS SHOWN IN THE TEMPORARY EROSION CONTROL PLANS
- C. PLACE TEMPORARY EROSION CONTROL SEEDING AS SHOWN IN THE TEMPORARY EROSION CONTROL PLANS
- D. PLACE TEMPORARY DITCH CHECKS AS SHOWN IN THE TEMPORARY EROSION CONTROL PLANS
- E. CONSTRUCT DIVERSION CHANNELS AND SLOPE DRAINS AS SHOWN IN THE TEMPORARY EROSION CONTROL PLANS
- F. PLACE PERMANENT EROSION CONTROL MEASURES



REVISIONS	
NAME	DATE

ILLINOIS DEPARTMENT OF TRANSPORTATION
 ILLINOIS ROUTE 22
 FROM US RTE 12 TO BUESCHING RD
 TEMPORARY EROSION CONTROL PLANS
 OVERALL EAST STAGE 5B

DATE 7/21/04
 DRAWN BY RLS
 CHECKED BY MBF