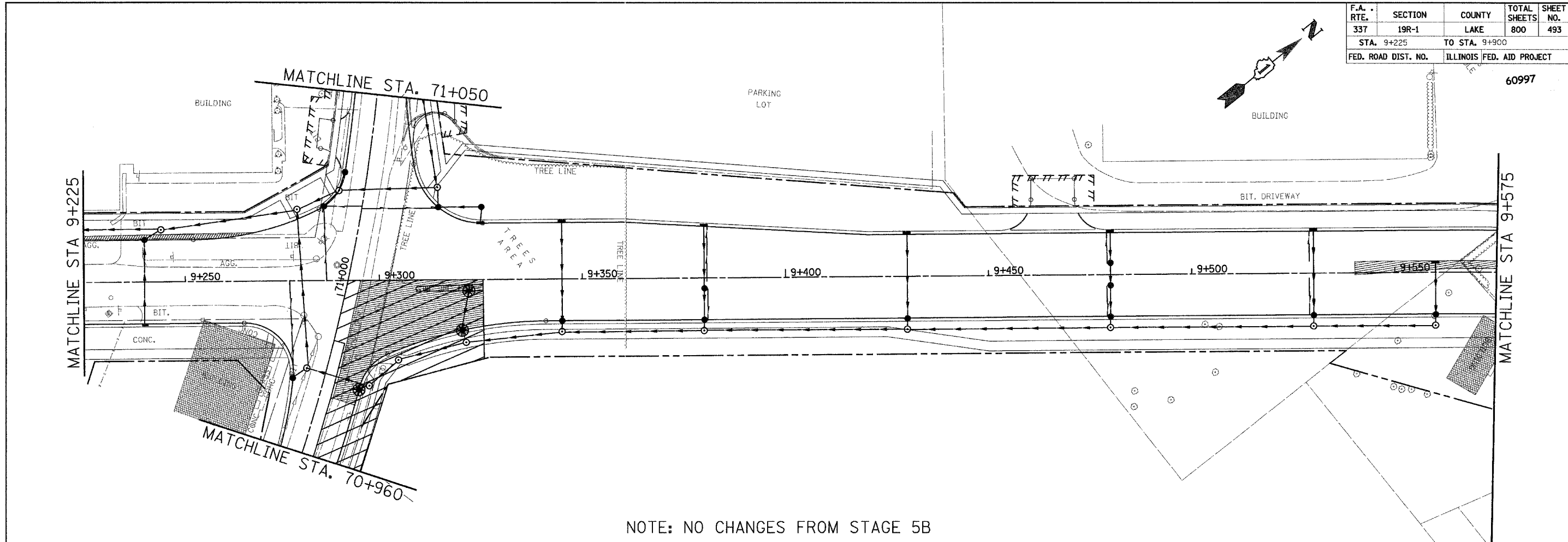


F.A. RTE.	SECTION	COUNTY	TOTAL SHEETS	SHEET NO.
337	19R-1	LAKE	800	493
STA. 9+225	TO STA. 9+900			
FED. ROAD DIST. NO.	ILLINOIS	FED. AID PROJECT		

60997



NOTE: NO CHANGES FROM STAGE 5B



LEGEND:

- DRAINAGE STRUCTURE INLET FILTER
- INLET AND PIPE PROTECTION
- PERIMETER EROSION BARRIER
- TEMPORARY EROSION CONTROL SEEDING
- TEMPORARY DITCH CHECK
- DIVERSION CHANNEL
- SLOPE DRAIN

REVISIONS	
NAME	DATE

ILLINOIS DEPARTMENT OF TRANSPORTATION
 ILLINOIS ROUTE 22
 FROM US RTE 12 TO BUESCHING RD
 TEMPORARY EROSION CONTROL PLAN
 STA. 9+225 TO STA. 9+900
 STAGE 5C
 DRAWN BY RLS
 CHECKED BY MBF
 DATE 7/21/04

