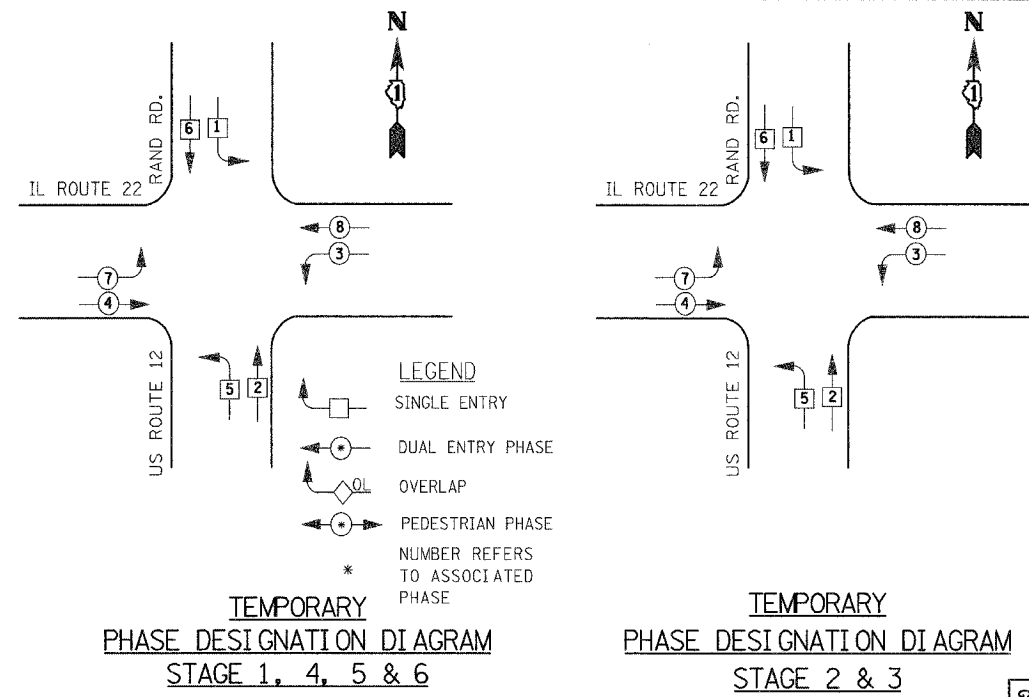
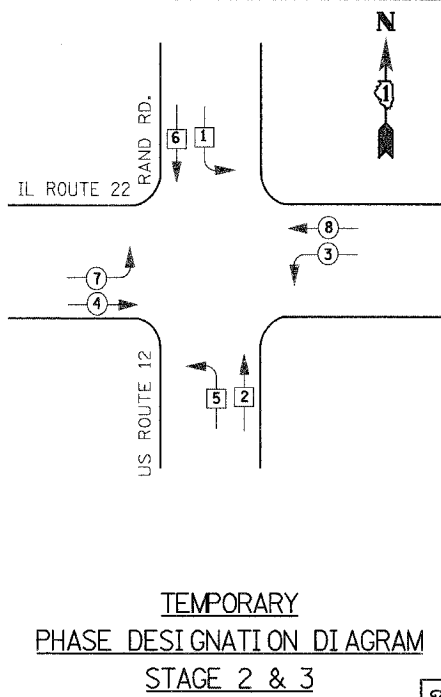


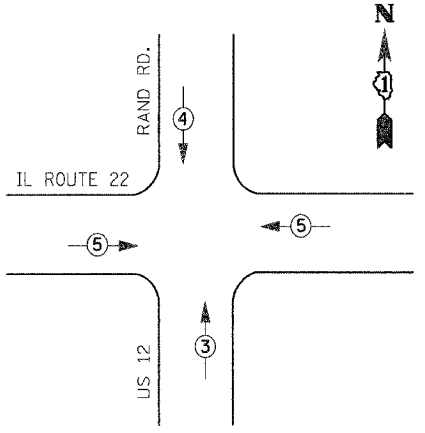
F.A. RTE.	SECTION	COUNTY	TOTAL SHEETS	SHEET NO.
337	19R-1	LAKE	800	504
STA. 19R-1		TO STA.		
FED. ROAD DIST. NO.		ILLINOIS FED. AID PROJECT		
CONTRACT NO. 60997				



**TEMPORARY PHASE DESIGNATION DIAGRAM**  
STAGE 1, 4, 5 & 6



**TEMPORARY PHASE DESIGNATION DIAGRAM**  
STAGE 2 & 3

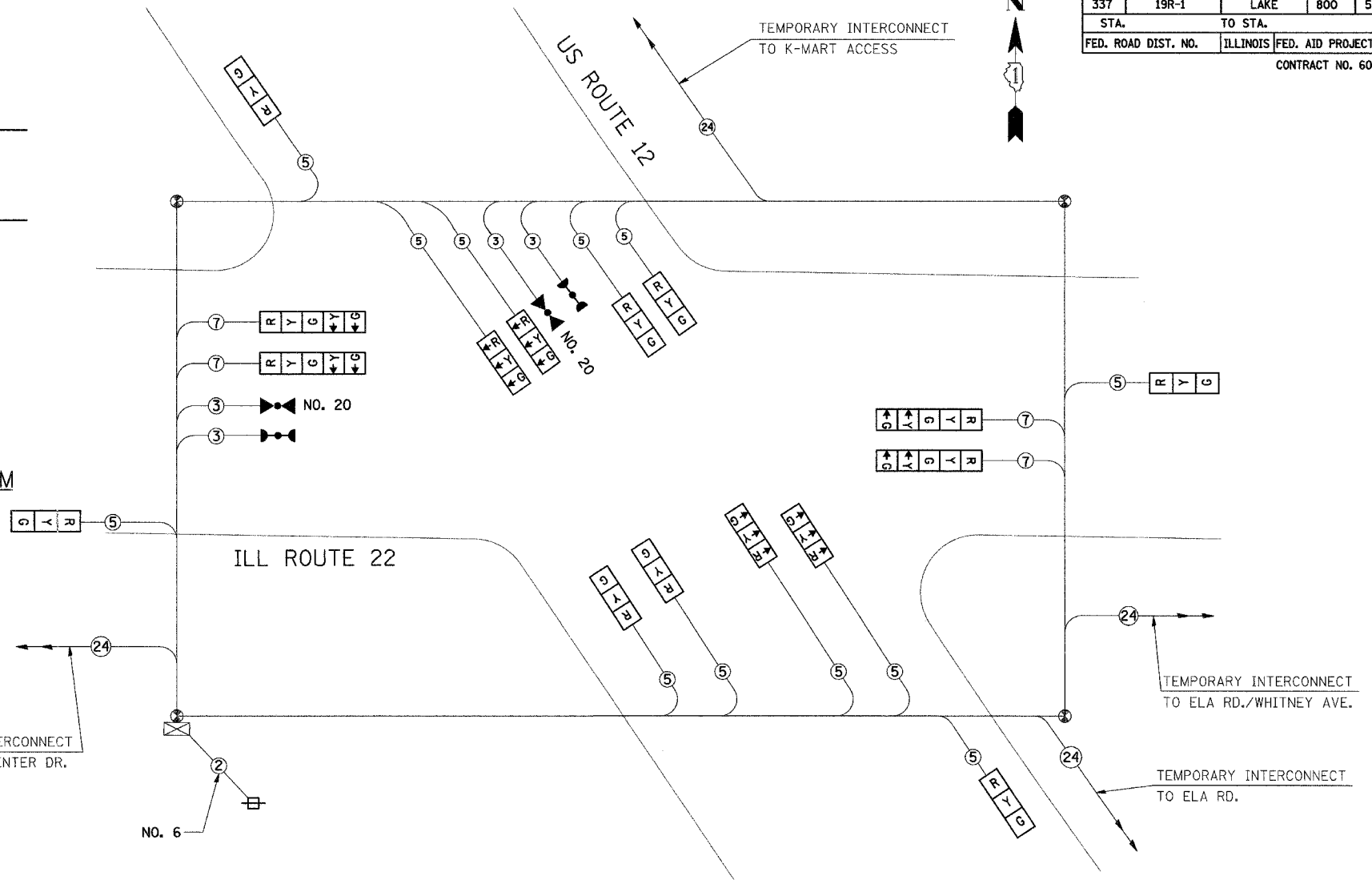


**EMERGENCY VEHICLE PREEMPTION SEQUENCE**

TEMPORARY EMERGENCY VEHICLE PREEMPTOR			
EMERGENCY VEHICLE PREEMPTOR	3	4	5
MOVEMENT	↑	↓	← →

**CONSTRUCTION NOTES**

1. THE EXISTING TRAFFIC SIGNAL CLOSED LOOP SYSTEM OPERATION SHALL BE MAINTAINED DURING CONSTRUCTION.
2. THE CONTRACTOR SHALL MAINTAIN THE EXISTING SIGNAL SYSTEM INTERCONNECT DURING TEMPORARY SIGNAL OPERATION.



**CABLE PLAN**

**TEMPORARY CABLE DIAGRAM LEGEND**

- [R] TEMPORARY TRAFFIC SIGNAL SECTION OR PEDESTRIAN SIGNAL SECTION 12" (300 mm)
- [X] TEMPORARY CONTROLLER CABINET
- [S] TEMPORARY SERVICE INSTALLATION
- (5) INDICATES NUMBER OF CONDUCTORS IN CABLE. ALL CONDUCTORS TO BE NUMBER 14 AWG WIRE UNLESS OTHERWISE NOTED.
- [V] EMERGENCY VEHICLE LIGHT DETECTOR
- [B] CONFIRMATION BEACON
- [□] VEHICLE DETECTOR, INDUCTION LOOP
- [O] PEDESTRIAN PUSHBUTTON DETECTOR
- [P] 12" (300mm) PEDESTRIAN SIGNAL SECTION
- [V] VIDEO DETECTION

I.D.O.T. TRAFFIC SIGNAL INSTALLATION ELECTRICAL SERVICE REQUIREMENTS					TOTAL WATTAGE
TYPE	NO. LAMPS	WATTAGE INCAND.	LED	% OPERATION	
SIGNAL (RED)	16	135	17	0.50	1080
(YELLOW)	16	135	25	0.25	540
(GREEN)	16	135	15	0.25	540
ARROW	20	135	12	0.10	270
PED. SIGNAL		90	25	1.00	
CONTROLLER		100	100	1.00	100
ILLUM. SIGN		84		0.05	
FLASHER				0.50	
ENERGY COSTS TO:				TOTAL =	2530

ILLINOIS DEPARTMENT OF TRANSPORTATION  
201 WEST CENTER COURT  
SCHAUMBURG, ILLINOIS 60196-1096  
CONTACT: TERI BLACK  
PHONE: (847) 816-5239  
COMPANY: COM. EDISON

THE TEMPORARY TRAFFIC SIGNAL CONTROL EQUIPMENT FOR THIS PROJECT SHALL BE "ECONOLITE" TO MATCH THE EXISTING ADJACENT SYSTEM

REVISIONS	
NAME	DATE

ILLINOIS DEPARTMENT OF TRANSPORTATION  
**TEMPORARY CABLE PLAN & TEMPORARY PHASE DESIGNATION DIAGRAM**  
IL RTE 22 & US RTE 12 (RAND RD)  
SCALE: N.T.S.  
DATE: 07/21/04  
DRAWN BY: VAP  
DESIGNED BY: RAM  
CHECKED BY: DDL