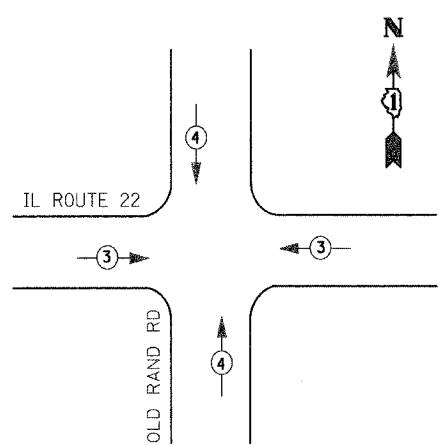


TEMPORARY PHASE DESIGNATION DIAGRAM STAGE 1

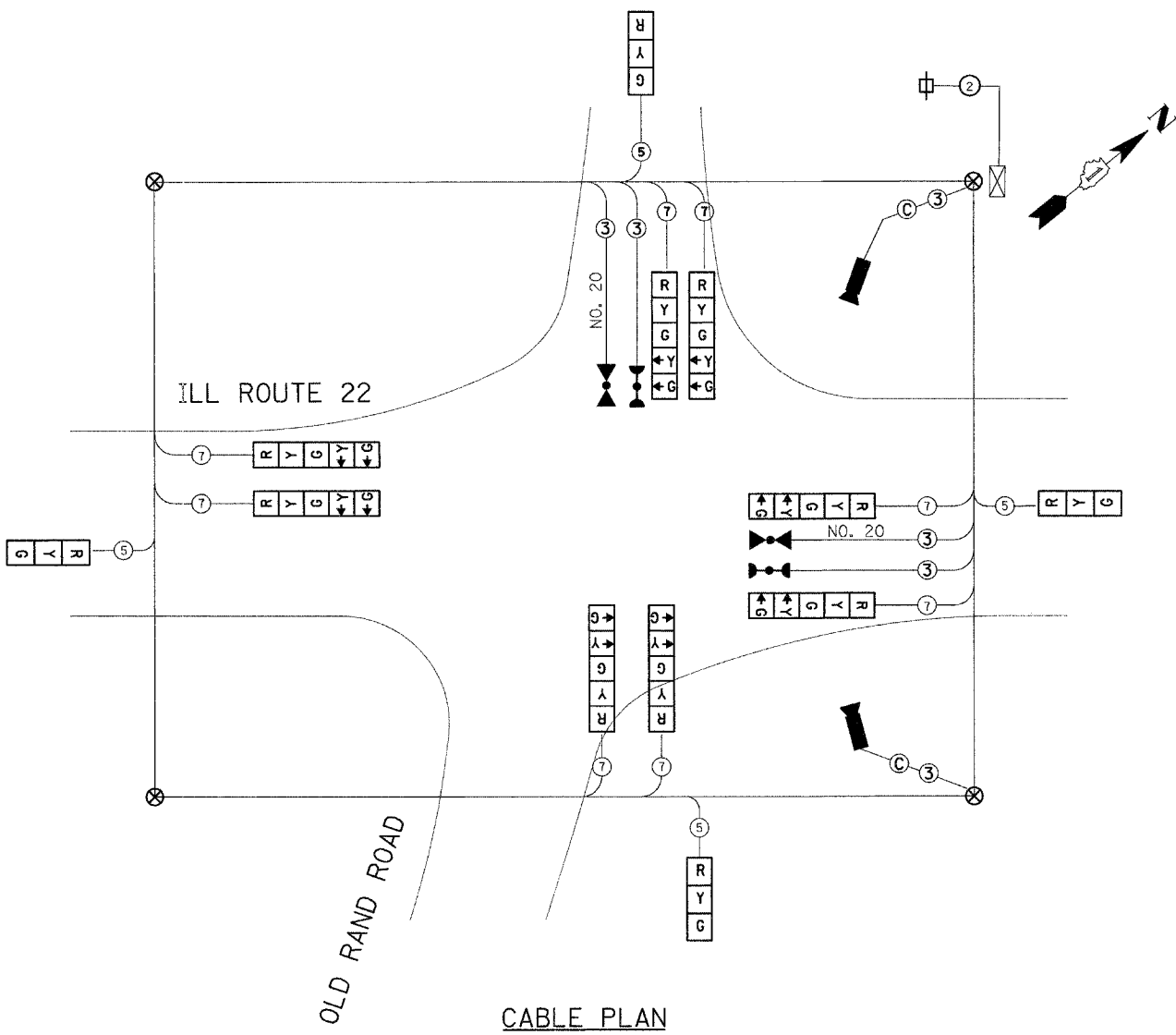
THE CONTRACTOR SHALL BAG THE EB THROUGH AND ALL WB SIGNAL HEAD DISPLAYS



EMERGENCY VEHICLE PREEMPTION SEQUENCE

TEMPORARY EMERGENCY VEHICLE PREEMPTOR		
EMERGENCY VEHICLE PREEMPTOR	3	4
MOVEMENT	← →	↑ ↓

I.D.O.T. TRAFFIC SIGNAL INSTALLATION ELECTRICAL SERVICE REQUIREMENTS					TOTAL WATTAGE
TYPE	NO. LAMPS	WATTAGE		% OPERATION	
SIGNAL (RED)	12	135	17	0.50	810
(YELLOW)	12	135	25	0.25	405
(GREEN)	12	135	15	0.25	405
ARROW	16	135	12	0.10	216
PED. SIGNAL	0	90	25	1.00	
CONTROLLER	1	100	100	1.00	100
ILLUM. SIGN		84		0.05	
FLASHER				0.50	
ENERGY COSTS TO: TOTAL =					1936
ILLINOIS DEPARTMENT OF TRANSPORTATION 201 WEST CENTER COURT SCHAUMBURG, ILLINOIS 60196-1096 CONTACT: TERI BLACK PHONE: (847) 816-5239 COMPANY: COM. EDISON					



CABLE PLAN

TEMPORARY CABLE DIAGRAM LEGEND

- R TEMPORARY TRAFFIC SIGNAL SECTION OR PEDESTRIAN SIGNAL SECTION 12" (300 mm)
- X TEMPORARY CONTROLLER CABINET
- TEMPORARY SERVICE INSTALLATION
- ⑤ INDICATES NUMBER OF CONDUCTORS IN CABLE. ALL CONDUCTORS TO BE NUMBER 14 AWG WIRE UNLESS OTHERWISE NOTED.
- EMERGENCY VEHICLE LIGHT DETECTOR
- CONFIRMATION BEACON
- VEHICLE DETECTOR, INDUCTION LOOP
- PEDESTRIAN PUSHBUTTON DETECTOR
- P 12" (300mm) PEDESTRIAN SIGNAL SECTION
- VIDEO DETECTION

CONSTRUCTION NOTES

- THE EXISTING TRAFFIC SIGNAL CLOSED LOOP SYSTEM OPERATION SHALL BE MAINTAINED DURING CONSTRUCTION.
- THE CONTRACTOR SHALL MAINTAIN THE EXISTING SIGNAL SYSTEM INTERCONNECT DURING TEMPORARY SIGNAL OPERATION.
- SEE MAINTENANCE OF TRAFFIC PLANS FOR DETAILS OF CONSTRUCTION STAGING

THE TEMPORARY TRAFFIC SIGNAL CONTROL EQUIPMENT FOR THIS PROJECT SHALL BE "ECONOLITE" TO MATCH THE EXISTING ADJACENT SYSTEM

REVISIONS	
NAME	DATE

ILLINOIS DEPARTMENT OF TRANSPORTATION

TEMPORARY CABLE PLAN & TEMPORARY PHASE DESIGNATION DIAGRAM IL RTE 22 & OLD RAND ROAD

SCALE : N.T.S.
DATE : 07/21/04

DRAWN BY VAP
DESIGNED BY RAM
CHECKED BY DDL