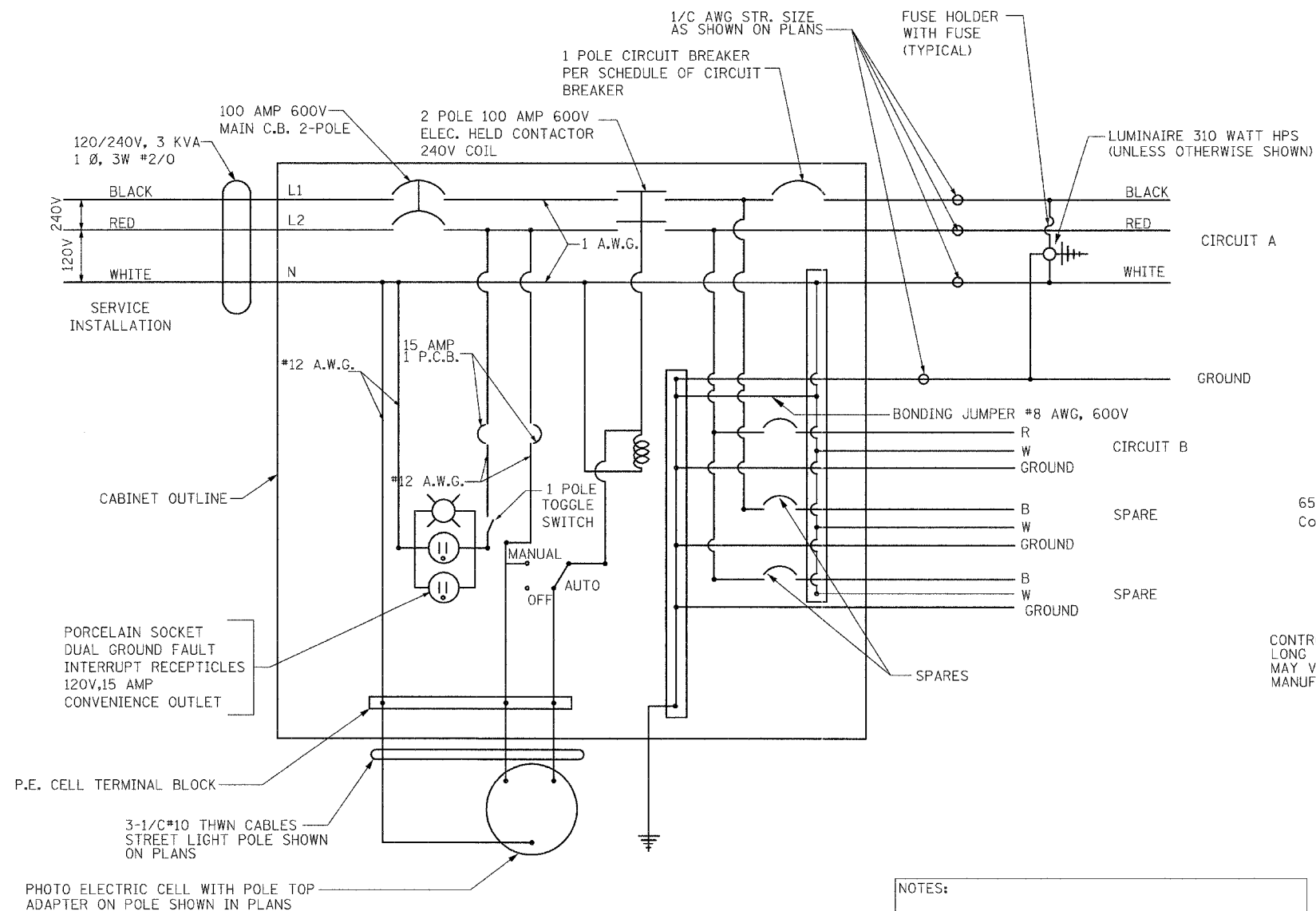


F.A. RTE.	SECTION	COUNTY	TOTAL SHEETS	SHEET NO.
337	19R-1	LAKE	800	544
STA.		TO STA.		
FED. ROAD DIST. NO.	ILLINOIS	FED. AID PROJECT	CONTRACT NO. 60997	

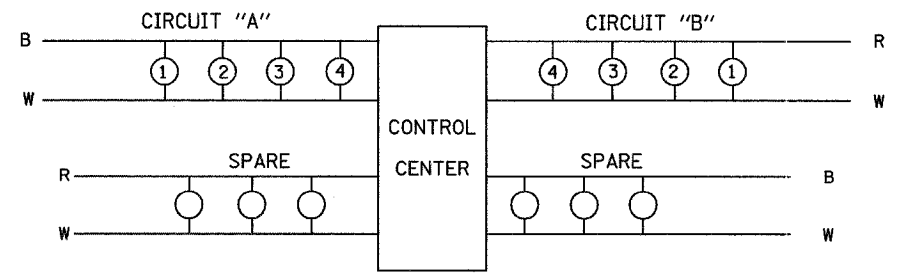


WIRING DIAGRAM - CONTROL CENTER

NOTES:

THE PHOTOCELL SHALL BE MOUNTED ON TOP OF THE CONTROLLER CABINET AS SHOWN ON THE DETAIL AND PER THE MANUFACTURERS RECOMMENDATIONS AND SPECIFICATIONS.

THE COST OF THE PHOTOCELL AND ALL NECESSARY WIRES, CONNECTIONS AND ITEMS SHALL BE INCIDENTAL TO THE LIGHTING CONTROLLER

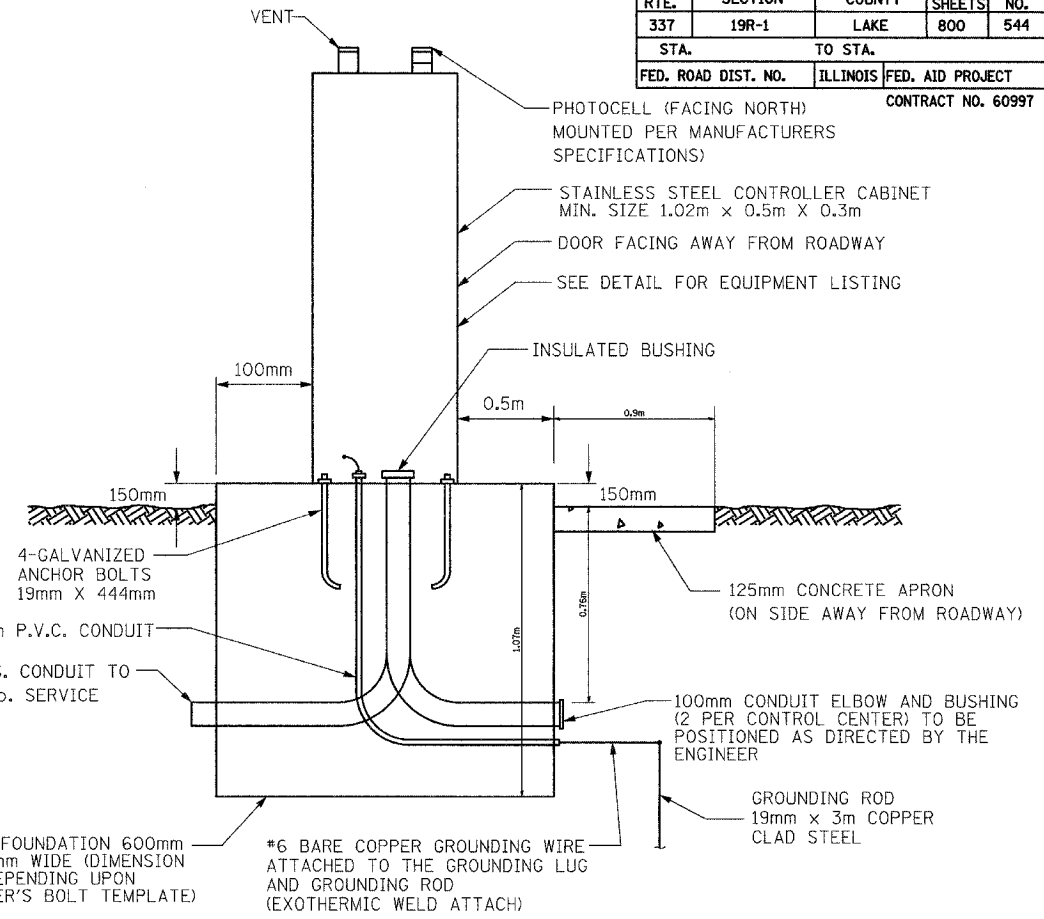


CIRCUIT DIAGRAM

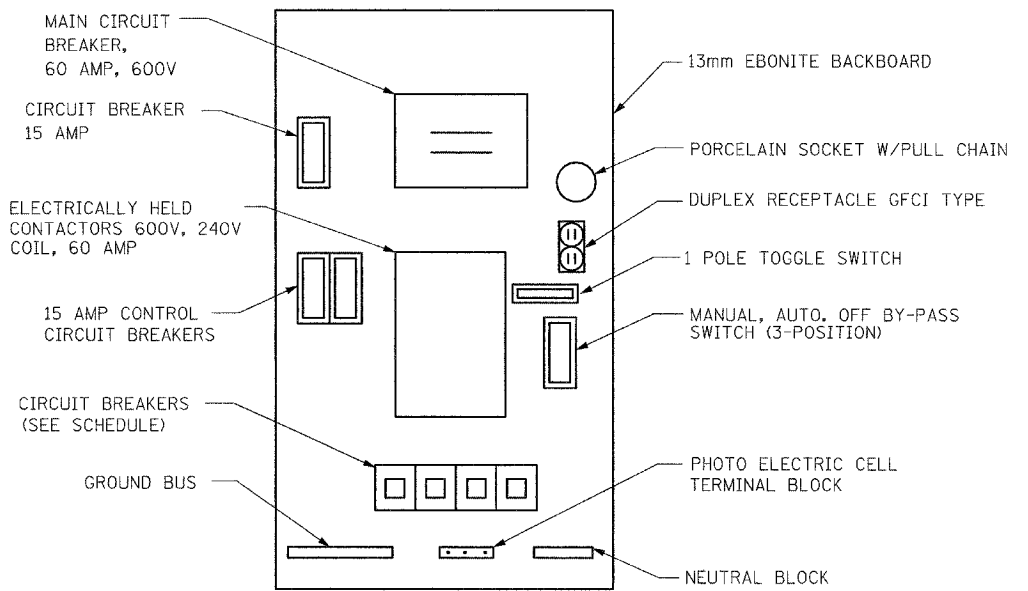
SCHEDULE OF CIRCUIT BREAKERS	
CIRCUITS	BREAKER SIZE
A, B	15 AMP
SPARES	15 AMP

NOTE:

THE CIRCUIT BREAKERS & FRAME SHALL HAVE A 10,000 AMP 1 C RATING AND SHALL BE THERMAL-MAGNETIC TYPE



LIGHTING CONTROL CENTER



CONTROL CENTER EQUIPMENT LAYOUT

REVISIONS	
NAME	DATE

ILLINOIS DEPARTMENT OF TRANSPORTATION
ILLINOIS ROUTE 22
FROM US RTE 12 TO BUESCHING RD
IL RTE 22 - ELA RD/WHITNEY AVE
CONTROLLER DETAILS

SCALE :
DATE : 07/21/04

DRAWN BY VAP
DESIGNED BY RAM
CHECKED BY DDL