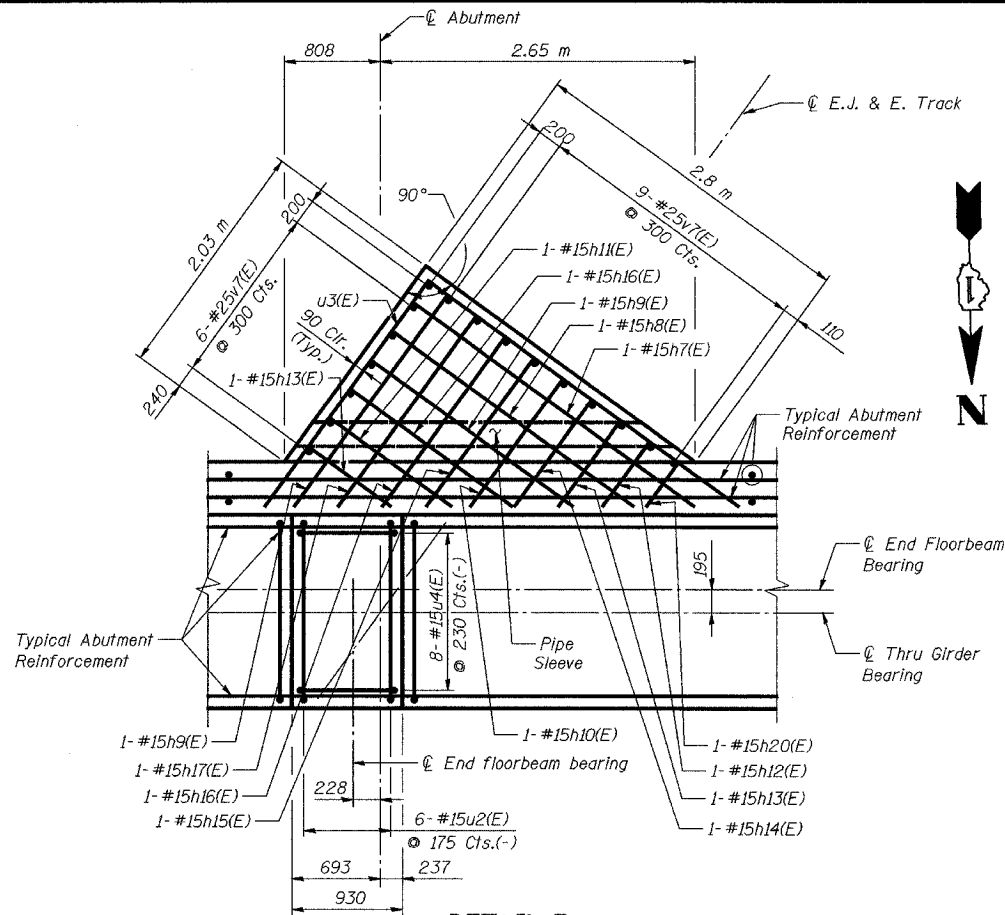


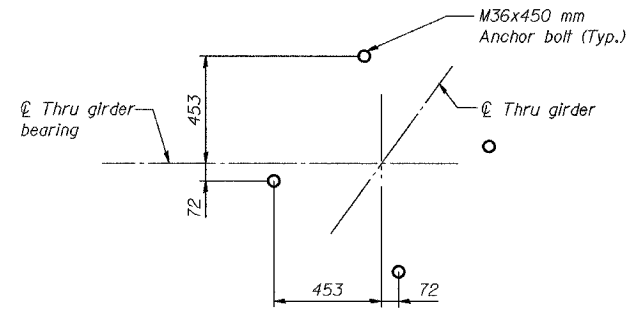
STATE OF ILLINOIS
DEPARTMENT OF TRANSPORTATION

ROUTE NO.	SECTION	COUNTY	TOTAL SHEETS	SHEET NO.
F.A.P. 337	19R-1	LAKE	800	611
FED. ROAD DIST. NO.	ILLINOIS	FED. AID PROJECT		

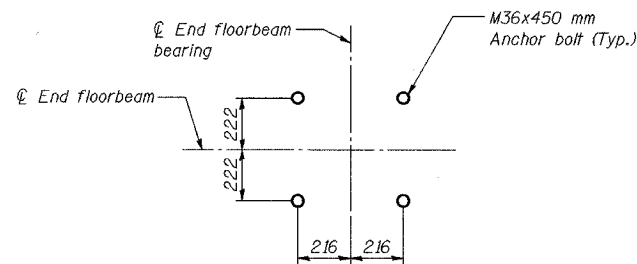
SHEET NO. 29
37 SHEETS



DETAIL 7



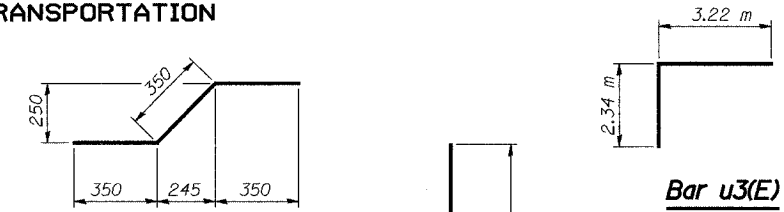
DETAIL 1



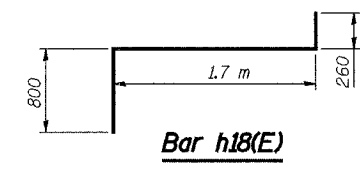
DETAIL 2

NOTES:

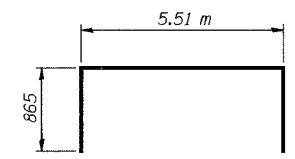
1. Work this Sheet with Sheets 21, 27 and 28.
2. Reinforcement Bars designated (E) shall be Epoxy Coated.
3. See Sheet 27 for locations of Details 1, 2, 7 and 8.
4. All dimensions are in millimeters (mm) except as noted.



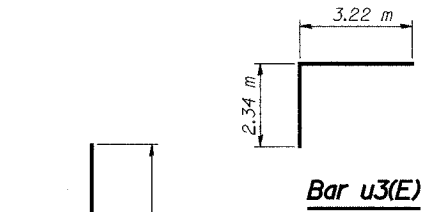
Bar h5(E)



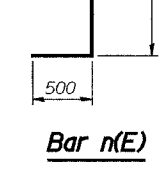
Bar h18(E)



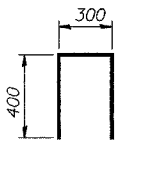
Bars t(E) and t1(E)



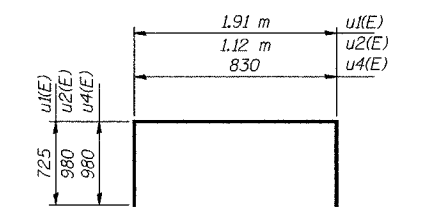
Bar u3(E)



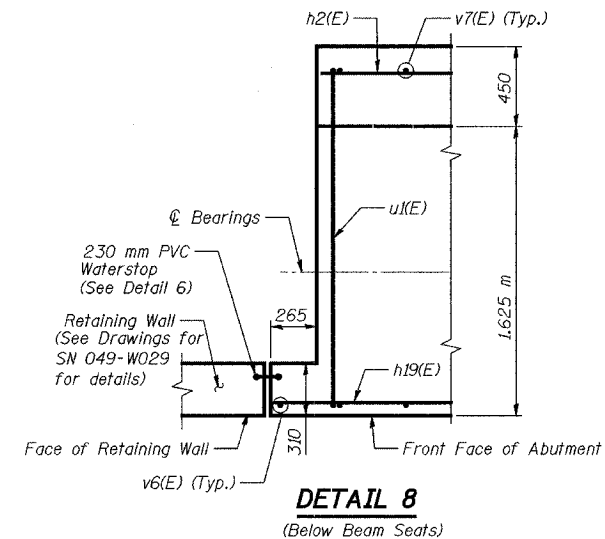
Bar n(E)



Bar u(E)



Bars u1(E), u2(E), and u4(E)



DETAIL 8

(Below Beam Seats)

BILL OF MATERIAL

Bar	No.	Size	Length (m)	Shape
h(E)	2	#15	2.45	
h1(E)	2	#15	2.63	
h2(E)	52	#15	5.32	
h3(E)	2	#15	1.3	
h4(E)	2	#15	1.11	
h5(E)	4	#15	1.05	
h6(E)	44	#15	1.5	
h7(E)	1	#15	2.92	
h8(E)	1	#15	2.5	
h9(E)	2	#15	2.1	
h10(E)	1	#15	1.31	
h11(E)	1	#15	1.01	
h12(E)	1	#15	0.67	
h13(E)	2	#15	0.89	
h14(E)	1	#15	1.1	
h15(E)	1	#15	1.54	
h16(E)	2	#15	1.75	
h17(E)	1	#15	1.97	
h18(E)	12	#15	2.76	
h19(E)	36	#15	2.2	
h20(E)	1	#15	0.45	
n(E)	126	#25	3.22	
t(E)	58	#30	7.24	
t1(E)	56	#25	7.24	
u(E)	50	#15	1.1	
u1(E)	56	#15	3.36	
u2(E)	6	#15	3.08	
u3(E)	18	#15	5.31	
u4(E)	8	#15	2.79	
v(E)	28	#15	1.5	
v3(E)	22	#15	2.18	
v5(E)	16	#15	2.45	
v6(E)	58	#25	4.88	
v7(E)	44	#25	5.83	
v8(E)	28	#25	6.51	
w(E)	80	#15	5.32	
Concrete Structures	cu m		191.18	
Reinforcement Bars, Epoxy Coated	kg		11,010	
Braced Excavation	cu m		628.4	
Bridge Seat Sealer	sq m		15.85	
Pipe Underdrains for Structures 200mm	meter		10.35	
Furnishing Metal Pile Shells 356 mm	meter		497	
Driving and Filling Shells	meter		497	
Test Pile Metal Shells	Each		1	
Rustication Finish	sq m		37.2	

SOUTH ABUTMENT DETAILS 2

Date	Designed	EV	ELGIN, JOLIET & EASTERN RY. CO. BRIDGE OVER ILLINOIS ROUTE 22 F.A.P. ROUTE 337 SECTION (19R-1) LAKE COUNTY STATION 32+61.151 STRUCTURE NO. 049-0188	Sheet No. 29 of 37
Revisions	Drawn	EV		
	Checked	NPP		
	Approved	NPP		
	Prepared By:	URS		