

PROP. CURVE 'RAMP B'  
 PI STA. = 14+64.12  
 $\Delta = 8^\circ 25' 49''$  (LT)  
 $D = 1^\circ 25' 11''$   
 $R = 4,036.00'$   
 $T = 297.46'$   
 $L = 593.85'$   
 $E = 10.95'$   
 $e = \text{-----}$   
 $T.R. = \text{-----}$   
 $S.E. RUN = \text{-----}$   
 $P.C. STA. = 11+66.66$   
 $P.T. STA. = 17+60.51$

CURVE NEFRONT-1  
 PI STA. = 221+92.34  
 $\Delta = 31^\circ 59' 38''$  (LT)  
 $D = 8^\circ 11' 06''$   
 $R = 700.00'$   
 $T = 200.68'$   
 $L = 390.88'$   
 $E = 28.20'$   
 $e = \text{-----}$   
 $T.R. = \text{-----}$   
 $S.E. RUN = \text{-----}$   
 $P.C. STA. = 219+91.65$   
 $P.T. STA. = 223+82.53$

CURVE NWRAMP-1  
 'RAMP C'  
 PI STA. = 603+91.40  
 $\Delta = 16^\circ 18' 17''$  (LT)  
 $D = 4^\circ 46' 29''$   
 $R = 1,200.00'$   
 $T = 171.91'$   
 $L = 341.49'$   
 $E = 12.25'$   
 $e = \text{-----}$   
 $T.R. = \text{-----}$   
 $S.E. RUN = \text{-----}$   
 $P.C. STA. = 602+19.50$   
 $P.T. STA. = 605+60.98$

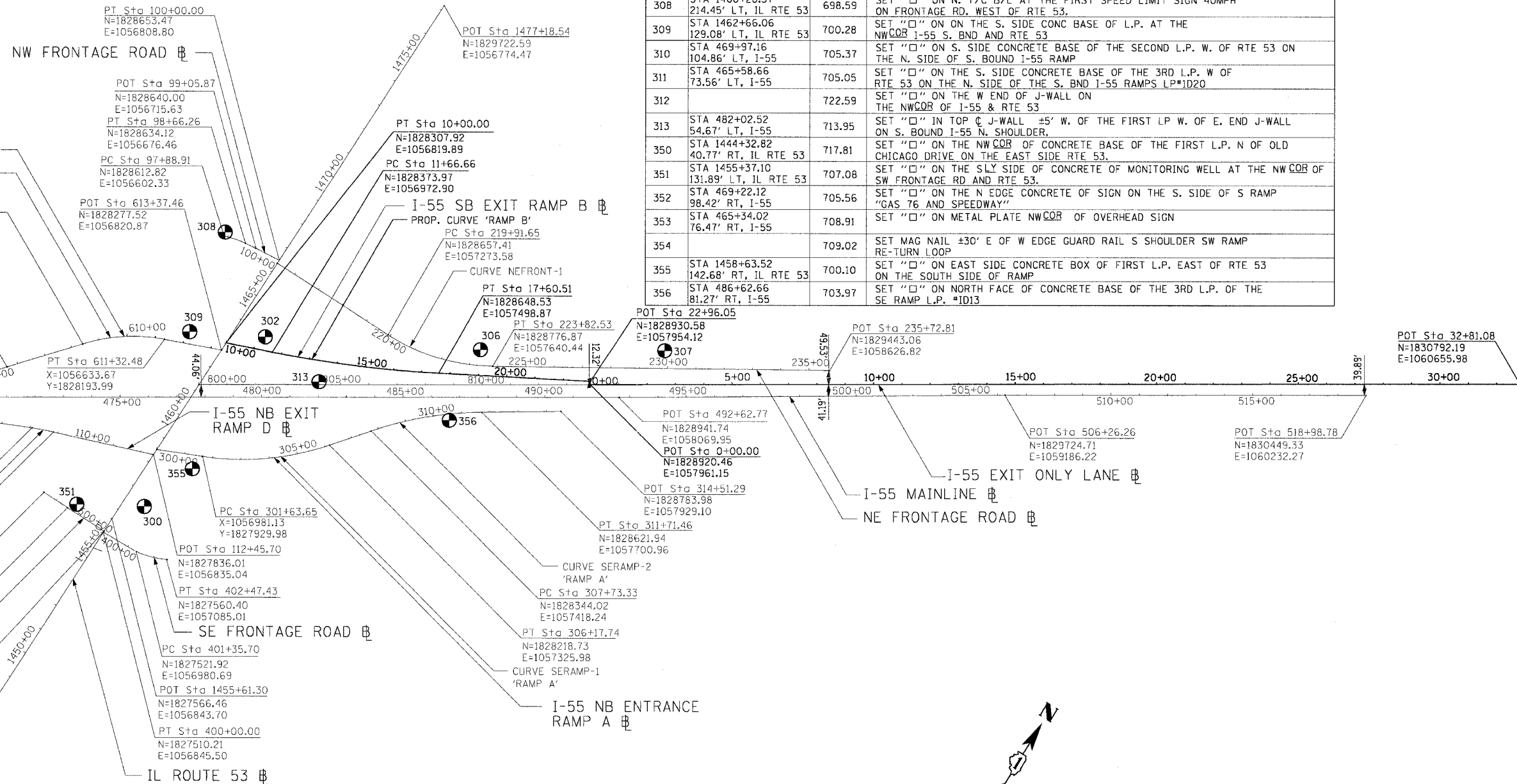
CURVE NWRAMP-2  
 'RAMP C'  
 PI STA. = 609+89.68  
 $\Delta = 27^\circ 49' 59''$  (RT)  
 $D = 9^\circ 32' 57''$   
 $R = 600.00'$   
 $T = 148.67'$   
 $L = 291.47'$   
 $E = 18.14'$   
 $e = \text{-----}$   
 $T.R. = \text{-----}$   
 $S.E. RUN = \text{-----}$   
 $P.C. STA. = 608+41.01$   
 $P.T. STA. = 611+32.48$

CURVE SWRAMP-1  
 'RAMP D'  
 PI STA. = 105+62.46  
 $\Delta = 5^\circ 52' 40''$  (RT)  
 $D = 2^\circ 51' 53''$   
 $R = 2,000.00'$   
 $T = 102.68'$   
 $L = 205.18'$   
 $E = 2.63'$   
 $e = \text{-----}$   
 $T.R. = \text{-----}$   
 $S.E. RUN = \text{-----}$   
 $P.C. STA. = 104+59.78$   
 $P.T. STA. = 106+64.95$

CURVE SWRAMP-2  
 'RAMP D'  
 PI STA. = 108+44.84  
 $\Delta = 4^\circ 25' 08''$  (RT)  
 $D = 5^\circ 43' 46''$   
 $R = 1,000.00'$   
 $T = 38.58'$   
 $L = 77.12'$   
 $E = 0.74'$   
 $e = \text{-----}$   
 $T.R. = \text{-----}$   
 $S.E. RUN = \text{-----}$   
 $P.C. STA. = 108+06.26$   
 $P.T. STA. = 108+83.38$

CURVE SERAMP-1  
 'RAMP A'  
 PI STA. = 303+95.12  
 $\Delta = 27^\circ 23' 12''$  (LT)  
 $D = 6^\circ 01' 52''$   
 $R = 950.00'$   
 $T = 231.47'$   
 $L = 454.09'$   
 $E = 27.79'$   
 $e = \text{-----}$   
 $T.R. = \text{-----}$   
 $S.E. RUN = \text{-----}$   
 $P.C. STA. = 301+63.65$   
 $P.T. STA. = 306+17.74$

CURVE SERAMP-2  
 'RAMP A'  
 PI STA. = 309+74.10  
 $\Delta = 18^\circ 14' 56''$  (RT)  
 $D = 4^\circ 35' 01''$   
 $R = 1,250.00'$   
 $T = 200.77'$   
 $L = 398.13'$   
 $E = 16.02'$   
 $e = \text{-----}$   
 $T.R. = \text{-----}$   
 $S.E. RUN = \text{-----}$   
 $P.C. STA. = 307+73.33$   
 $P.T. STA. = 311+71.46$

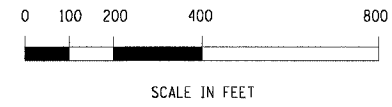


NUMBER	LOCATION	ELEVATION	DESCRIPTION
300	STA 1456+59.76 72.33' RT, IL RTE 53	704.52	SET "O" ON W. SIDE OF CONCRETE BASE OF I-55 "A" SOUTH BLOOMINGTON/I-55 NORTH "A" CHICAGO ON E. SIDE OF RTE 53 150' OF N BOUND I-55 RAMP
301		700.86	SET "O" ON T/C B/C ON E. SIDE OF RT. 53 EVEN WITH THE S. EDGE OF BRIDGE. (I-55)
302	STA 1463+96.26 104.52' RT, IL RTE 53	699.38	SET "O" ON THE SW CORNER OF THE TRAFFIC SIGNAL CONTROL BOX AT THE NE CORNER OF THE EXIT RAMP OF S. BOUND I-55 & RTE 53.
303		698.29	SET "O" ON W. SIDE CONCRETE BASE OF L.P. ON THE EAST SIDE OF RTE 53. SECOND L.P. S. OF REMINGTON RD. LP #1C10
304		696.03	SET "O" ON T/C B/C OPPTS. FIRST L.P. N. OF REMINGTON RD ON THE E. CURB OF RTE 53 L.P. #E20
305		712.51	SET "O" ON E. EDGE CONCRETE BASE OF L.P. ON THE WEST SIDE RTE 53 SECOND L.P. S. OS S. FRONTAGE ROAD
306	STA 487+72.62 168.21' LT, I-55	701.99	SET "A" ON THE SE BOLT OF SLY SUPPORT BAR TO LARGE OVERHEAD SIGN (CENTURY TILE).
307	STA 494+24.41 164.45' LT, I-55	712.69	SET "O" ON THE S. SIDE CONCRETE BASE OF L.P. AT THE NE COR OF N. FRONTAGE ROAD E OF RTE 53 & MANOR CT.
308	STA 1466+28.37 214.45' LT, IL RTE 53	698.59	SET "O" ON N. T/C B/L AT THE FIRST SPEED LIMIT SIGN 40MPH ON FRONTAGE RD. WEST OF RTE 53.
309	STA 1462+66.06 129.08' LT, IL RTE 53	700.28	SET "O" ON ON THE S. SIDE CONC BASE OF L.P. AT THE NW COR I-55 S. BND AND RTE 53
310	STA 469+97.16 104.86' LT, I-55	705.37	SET "O" ON S. SIDE CONCRETE BASE OF THE SECOND L.P. W. OF RTE 53 ON THE N. SIDE OF S. BOUND I-55 RAMP
311	STA 465+58.66 73.56' LT, I-55	705.05	SET "O" ON THE S. SIDE CONCRETE BASE OF THE 3RD L.P. W OF RTE 53 ON THE N. SIDE OF THE S. BND I-55 RAMPS LP#1D20
312		722.59	SET "O" ON THE W END OF J-WALL ON THE NW COR OF I-55 & RTE 53
313	STA 482+02.52 54.67' LT, I-55	713.95	SET "O" IN TOP OF J-WALL 5' W. OF THE FIRST LP W. OF E. END J-WALL ON S. BOUND I-55 N. SHOULDER.
350	STA 1444+32.82 40.77' RT, IL RTE 53	717.81	SET "O" ON THE NW COR OF CONCRETE BASE OF THE FIRST L.P. N OF OLD CHICAGO DRIVE ON THE EAST SIDE RTE 53.
351	STA 1455+37.10 131.89' LT, IL RTE 53	707.08	SET "O" ON THE SLY SIDE OF CONCRETE OF MONITORING WELL AT THE NW COR OF SW FRONTAGE RD AND RTE 53.
352	STA 469+22.12 98.42' RT, I-55	705.56	SET "O" ON THE N EDGE CONCRETE OF SIGN ON THE S. SIDE OF S RAMP "GAS 76 AND SPEEDWAY"
353	STA 465+34.02 76.47' RT, I-55	708.91	SET "O" ON METAL PLATE NW COR OF OVERHEAD SIGN
354		709.02	SET MAG NAIL 30' E OF W EDGE GUARD RAIL S SHOULDER SW RAMP RE-TURN LOOP
355	STA 1458+63.52 142.68' RT, IL RTE 53	700.10	SET "O" ON EAST SIDE CONCRETE BOX OF FIRST L.P. EAST OF RTE 53 ON THE SOUTH SIDE OF RAMP
356	STA 486+62.66 81.27' RT, I-55	703.97	SET "O" ON NORTH FACE OF CONCRETE BASE OF THE 3RD L.P. OF THE SE RAMP L.P. #1D13

F.A.I. RTE.	SECTION	COUNTY	TOTAL SHEETS	SHEET NO.
55	2002-022 K	WILL	172	17
STA. 10+00		TO STA. 22+96.05		
FED. ROAD DIST. NO.		ILLINOIS FED. AID PROJECT		
CONTRACT NO. 62389				

DATE: \_\_\_\_\_ BY: \_\_\_\_\_  
 CHECKED: \_\_\_\_\_  
 PLAN: \_\_\_\_\_  
 NOTE BOOK: \_\_\_\_\_  
 NO. \_\_\_\_\_

DATE: \_\_\_\_\_ BY: \_\_\_\_\_  
 CHECKED: \_\_\_\_\_  
 PROFILE: \_\_\_\_\_  
 NOTE BOOK: \_\_\_\_\_  
 NO. \_\_\_\_\_



DMJM HARRIS  
 303 East Wacker Drive, Suite 600  
 Chicago, Illinois, 60601 Phone: 312.321.6101 Fax: 312.396.2392

REVISIONS	
NAME	DATE

ILLINOIS DEPARTMENT OF TRANSPORTATION  
 BENCH MARKS AND ALIGNMENTS  
 SCALE: 1"=200'  
 DATE: 11/8/2004  
 DRAWN BY: JJ  
 CHECKED BY: RI