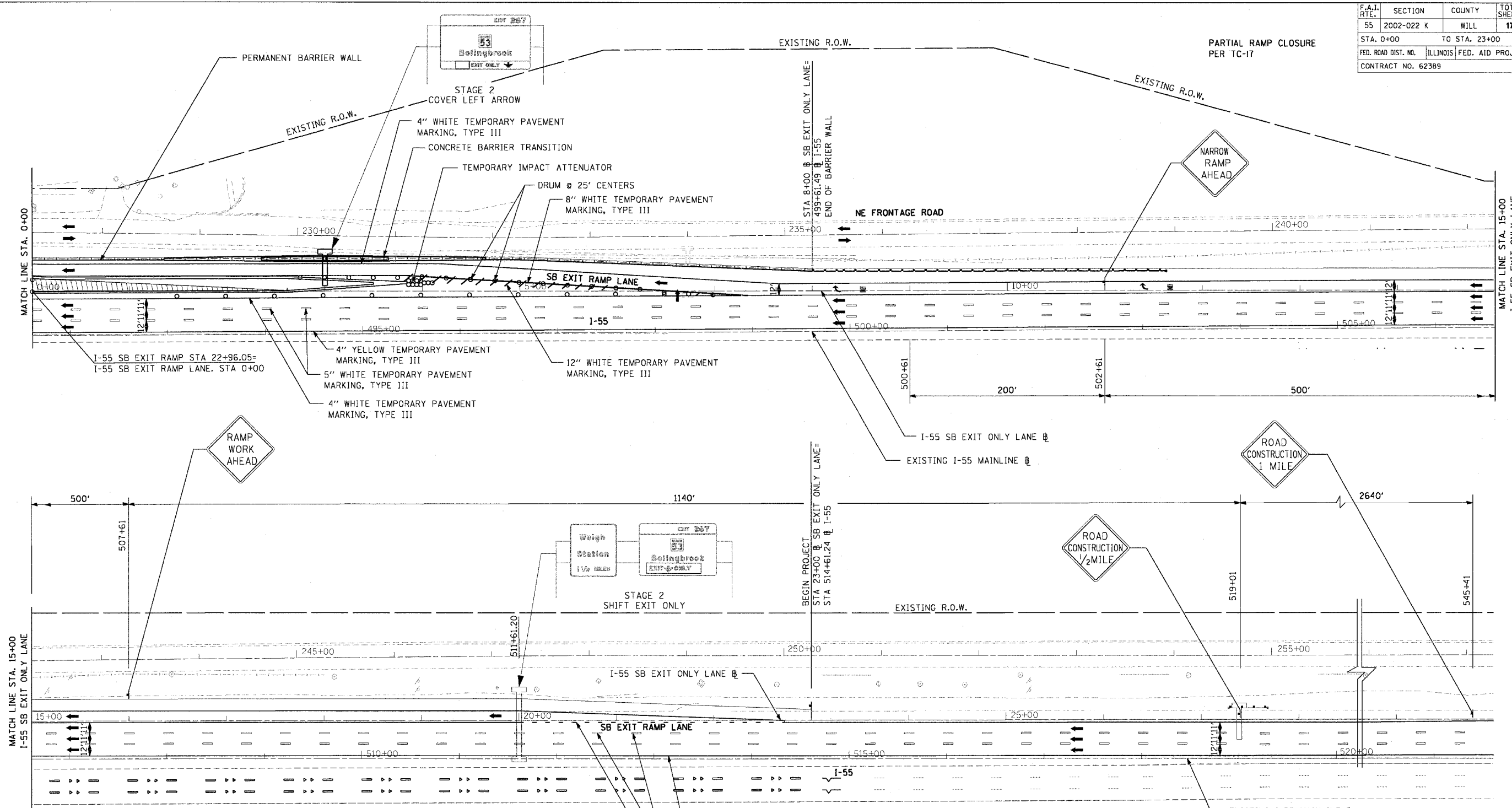
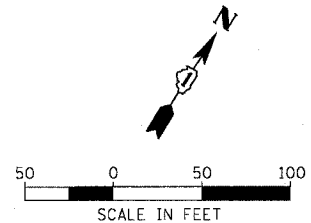


F.A.I. RTE.	SECTION	COUNTY	TOTAL SHEETS	SHEET NO.
55	2002-022 K	WILL	172	32
STA. 0+00		TO STA. 23+00		
FED. ROAD DIST. NO.		ILLINOIS FED. AID PROJECT		
CONTRACT NO. 62389				



**LEGEND:**

- ARROWBOARD
- WORK AREA
- TEMPORARY PAVEMENT
- SIGN ON PORTABLE OR PERMANENT SUPPORT
- FLAGGER WITH CONTROL SIGN
- DRUM WITH MONO DIRECTIONAL STEADY BURNING LIGHT
- CONES 700 (28") IN HEIGHT
- DIRECTION OF TRAFFIC



REVISIONS	
NAME	DATE

ILLINOIS DEPARTMENT OF TRANSPORTATION

SUGGESTED CONSTRUCTION STAGING  
I-55 SB EXIT ONLY LANE  
STA 0+00 TO STA 23+00  
STAGE 2

SCALE: 1"=50'  
DATE: 12/23/2004

DRAWN BY: CC  
CHECKED BY: RI

**DMJM HARRIS**  
303 East Wacker Drive, Suite 600  
Chicago, Illinois, 60601 Phone: 312.321.6101 Fax: 312.396.2392

MOT-12

PLAN	DATE
SURVEYED	BY
ALIGNED	BY
CHECKED	BY
BY	DATE
NO.	

PROFILE	DATE
SURVEYED	BY
GRADES	BY
CHECKED	BY
BY	DATE
NO.	