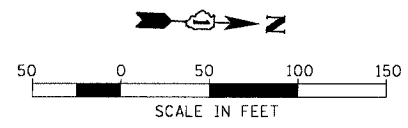


F.A.I. RTE.	SECTION	COUNTY	TOTAL SHEETS	SHEET NO.
55	2002-022 K	WILL	172	44
STA. 1454+20		TO STA. 1466+96		
FED. ROAD DIST. NO.	ILLINOIS	FED. AID PROJECT		
CONTRACT NO. 62389				

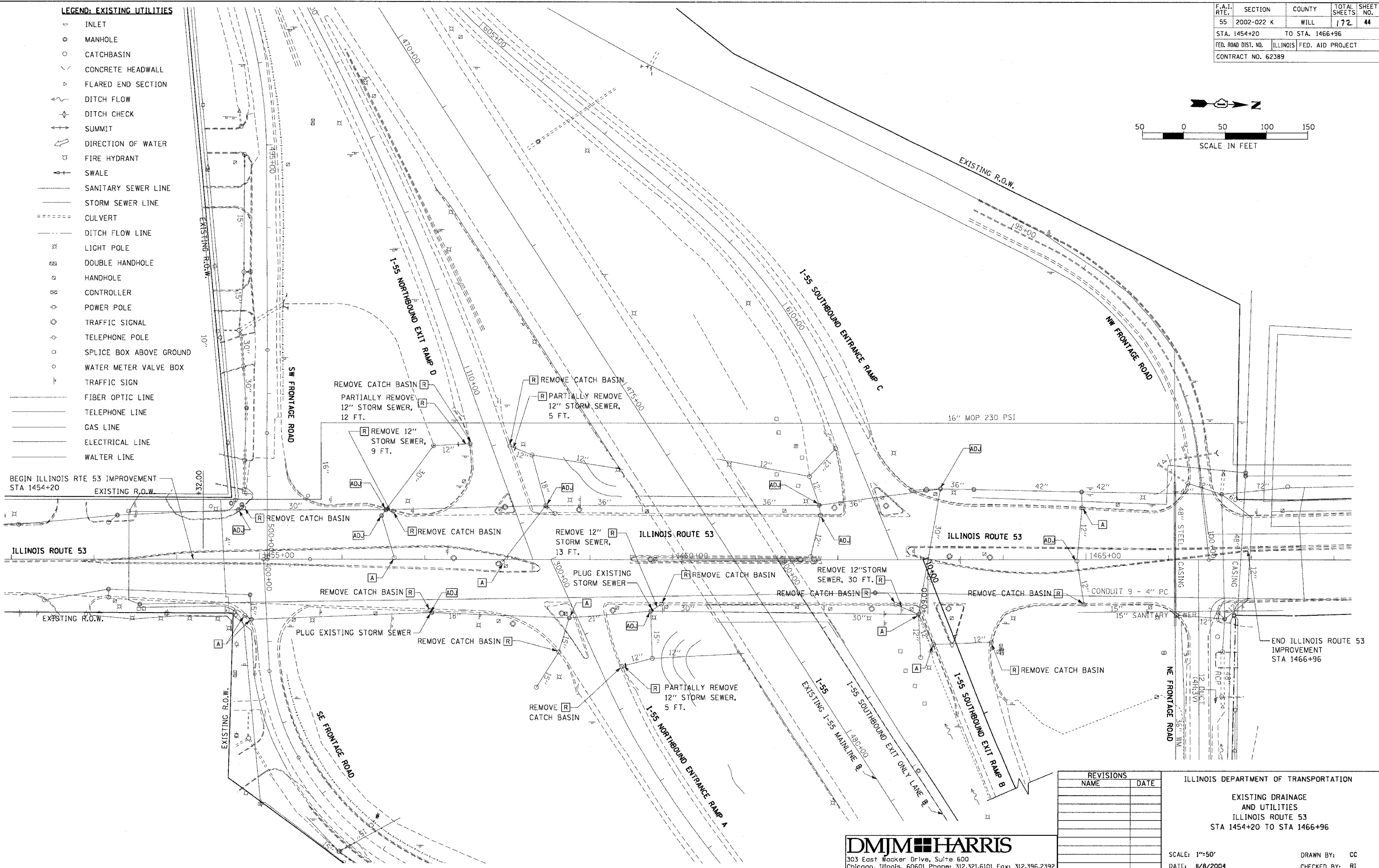


**LEGEND: EXISTING UTILITIES**

- INLET
- MANHOLE
- CATCHBASIN
- ∟ CONCRETE HEADWALL
- ∟ FLARED END SECTION
- ↪ DITCH FLOW
- ↪ DITCH CHECK
- ↑ SUMMIT
- ↪ DIRECTION OF WATER
- ⊕ FIRE HYDRANT
- ↑ SWALE
- SANITARY SEWER LINE
- STORM SEWER LINE
- CULVERT
- DITCH FLOW LINE
- ⊕ LIGHT POLE
- ⊕ DOUBLE HANDHOLE
- ⊕ HANDHOLE
- ⊕ CONTROLLER
- ⊕ POWER POLE
- ⊕ TRAFFIC SIGNAL
- ⊕ TELEPHONE POLE
- ⊕ SPLICE BOX ABOVE GROUND
- ⊕ WATER METER VALVE BOX
- ⊕ TRAFFIC SIGN
- FIBER OPTIC LINE
- TELEPHONE LINE
- GAS LINE
- ELECTRICAL LINE
- WALTER LINE

PLAN	DATE	BY

PROFILE	DATE	BY



REVISIONS	
NAME	DATE

ILLINOIS DEPARTMENT OF TRANSPORTATION  
 EXISTING DRAINAGE AND UTILITIES  
 ILLINOIS ROUTE 53  
 STA 1454+20 TO STA 1466+96

SCALE: 1"=50'  
 DATE: 11/8/2004

DRAWN BY: CC  
 CHECKED BY: RI

**DMJM HARRIS**  
 303 East Wacker Drive, Suite 600  
 Chicago, Illinois, 60601 Phone: 312.321.6101 Fax: 312.396.2392