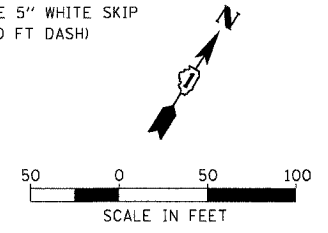
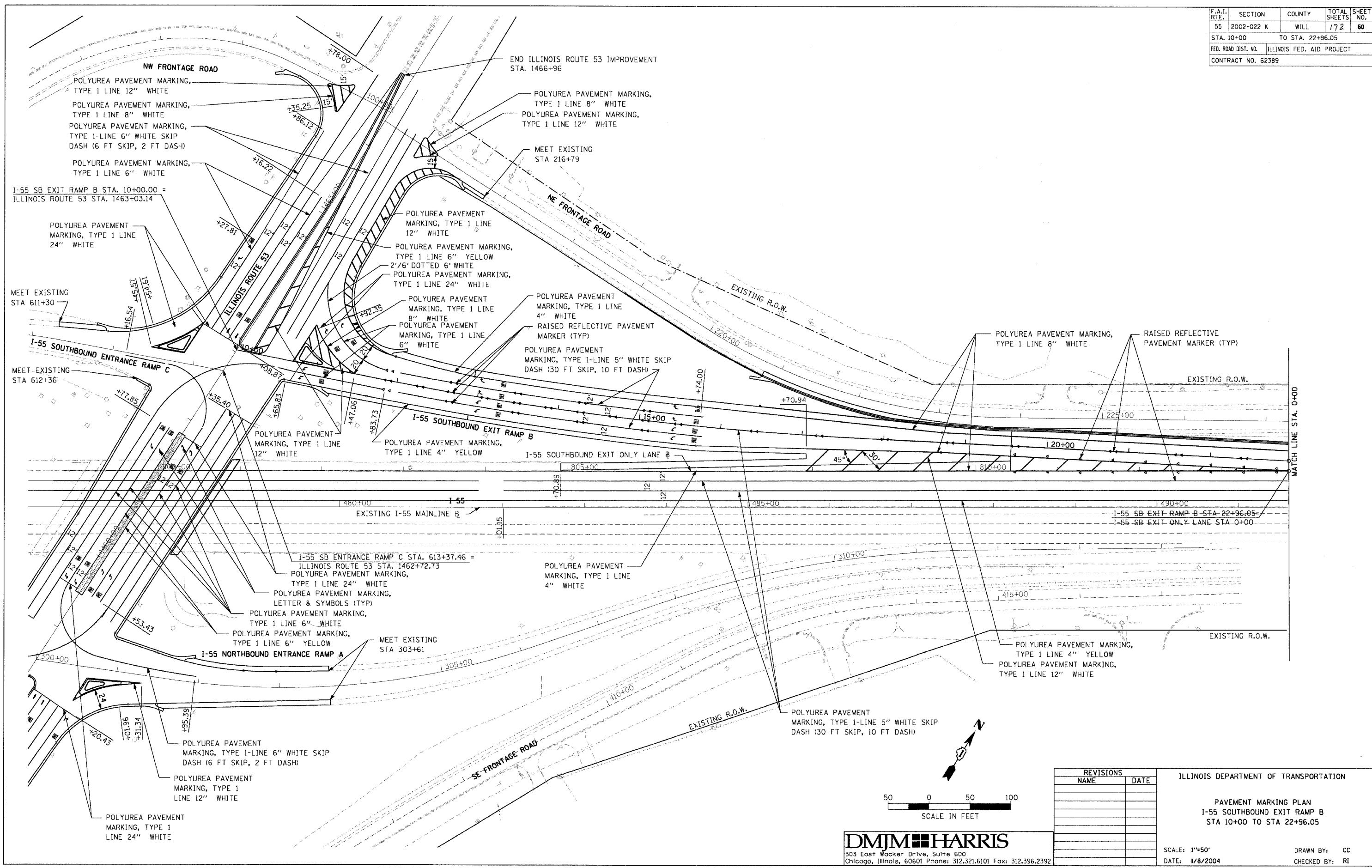


F.A.I. RTE.	SECTION	COUNTY	TOTAL SHEETS	SHEET NO.
55	2002-022 K	WILL	172	60
STA. 10+00		TO STA. 22+96.05		
FED. ROAD DIST. NO.		ILLINOIS FED. AID PROJECT		
CONTRACT NO. 62389				

PLAN	SURVEYED	DATE
	BY	
	PLOTTED	
	REVISIONS	
	NO. OF WAY CHECKED	
	PAID FILE NAME	

PROFILE	SURVEYED	DATE
	BY	
	PLOTTED	
	REVISIONS	
	NO. OF WAY CHECKED	
	STRUCTURE NOTATIONS CHKD	



REVISIONS	
NAME	DATE

ILLINOIS DEPARTMENT OF TRANSPORTATION

PAVEMENT MARKING PLAN
I-55 SOUTHBOUND EXIT RAMP B
STA 10+00 TO STA 22+96.05

SCALE: 1"=50'
DATE: 11/8/2004

DRAWN BY: CC
CHECKED BY: RI

DMJM HARRIS
303 East Wacker Drive, Suite 600
Chicago, Illinois, 60601 Phone: 312.321.6101 Fax: 312.396.2392