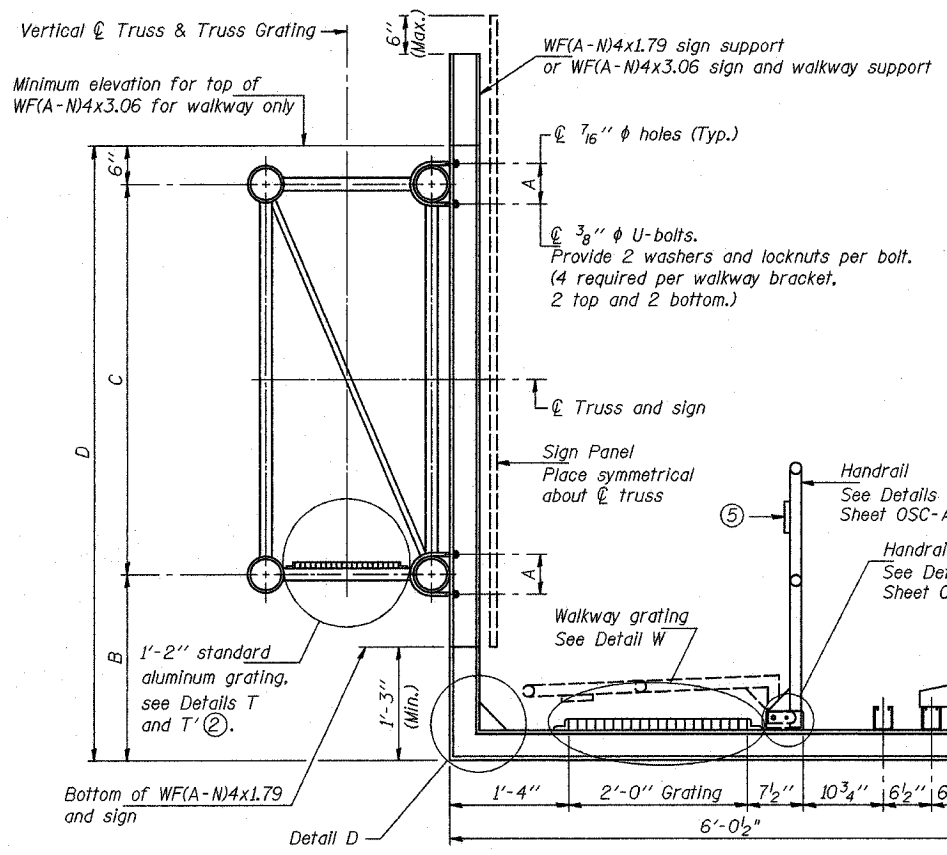
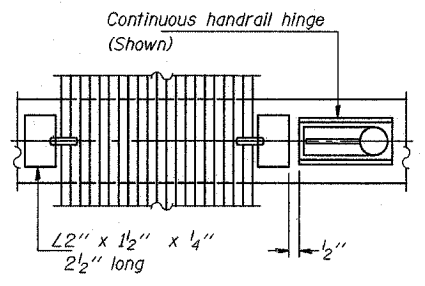


STATE OF ILLINOIS
DEPARTMENT OF TRANSPORTATION

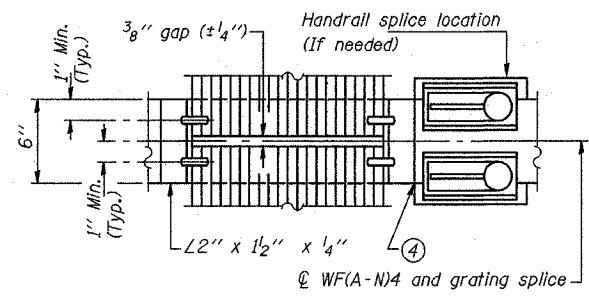
ROUTE NO.	SECTION	COUNTY	TOTAL SHEETS	SHEET NO.
55	2002-022 K	WILL	172	125
FED. ROAD DIST. NO. 1		ILLINOIS	FED. AID PROJECT	



SECTION B-B

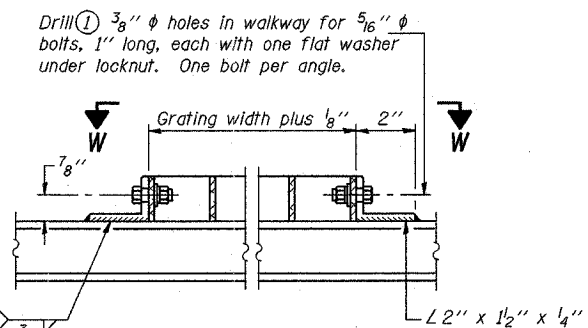


(CONTINUOUS WALKWAY GRATING)

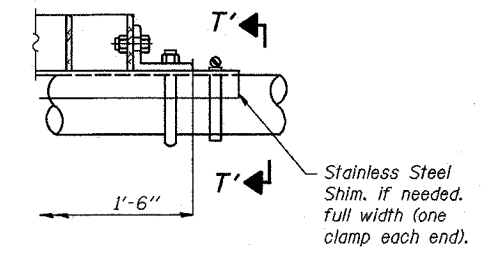


(AT WALKWAY GRATING SPLICE)

SECTION W-W

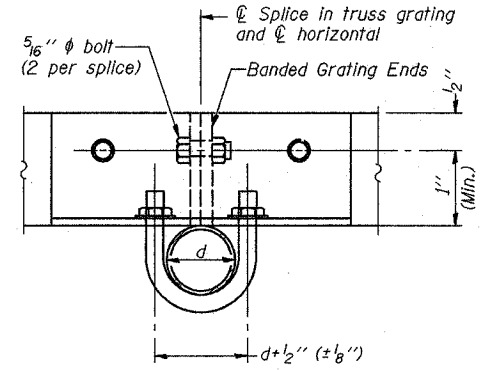


DETAIL W
(Walkway grating)

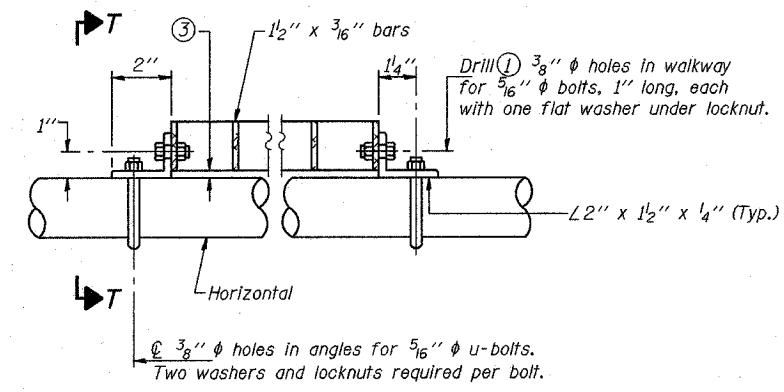


DETAIL T'

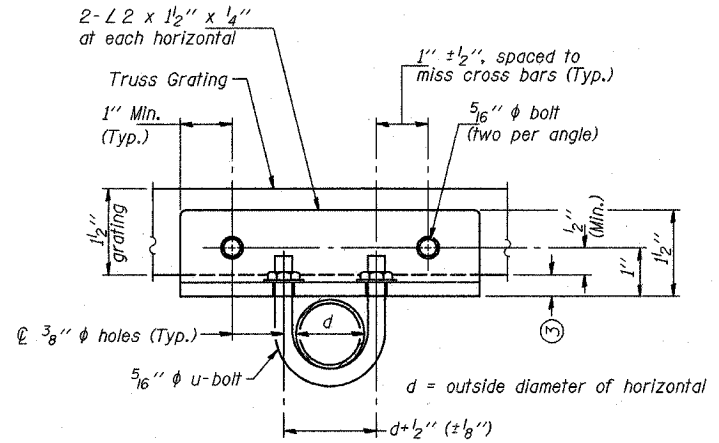
(Truss grating splice)
Details not shown same as Detail T.
Alternate materials may be used subject to the Engineer's review and approval.



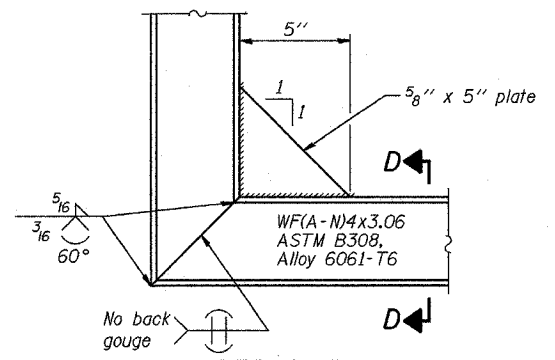
SECTION T'-T'



DETAIL T
(Truss grating at horizontal)

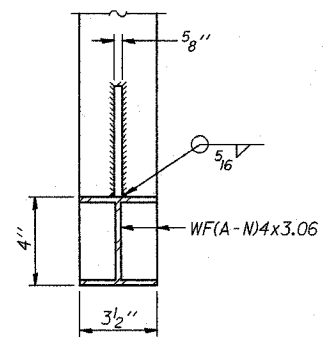


SECTION T-T'



DETAIL D

(See Detail P, Base Sheet OSC-A-8.)



SECTION D-D

NUMBER	REVISION	DATE

DESIGNED	SL	20
CHECKED	AS	EXAMINED
DRAWN	MD	PASSED
CHECKED	SL	ENGINEER OF BRIDGES AND STRUCTURES

- Drilling holes in grating may be done in shop or field, based on Contractor's preference and subject to accurate alignment.
- When truss grating must be spliced, use suggested detail or other methods subject to the Engineer's review and approval. Locate splice to avoid interference between cross bars and bolt locations.
- Tube to grating gap may vary from 0 to 1/2" (Max.) to align walkway, allow for camber, etc.
- If Handrail Joint present, weld angle to WF(A-N)4 and 1/4" extension bars. (See Base Sheet OSC-A-8)
- 1/8" x 1/2" x 2" welded to handrail posts to protect locations that contact grating.

Structure Number	Station	A	B	C	D
IC0991055L267.7	494+61.3	7 15/32"	4'-0"	7'-0"	11'-6"
IC0991055L268.1	519+00	8 15/32"	4'-0"	7'-0"	11'-6"

SGN-24
CANTILEVER SIGN STRUCTURES
WALKWAY DETAILS
ALUMINUM TRUSS & STEEL POST
ILLINOIS DEPARTMENT OF TRANSPORTATION
I-55 (STEVENS EXPY.) AT ILL. RTE. 53
OVERHEAD SIGN STRUCTURES CANTILEVER