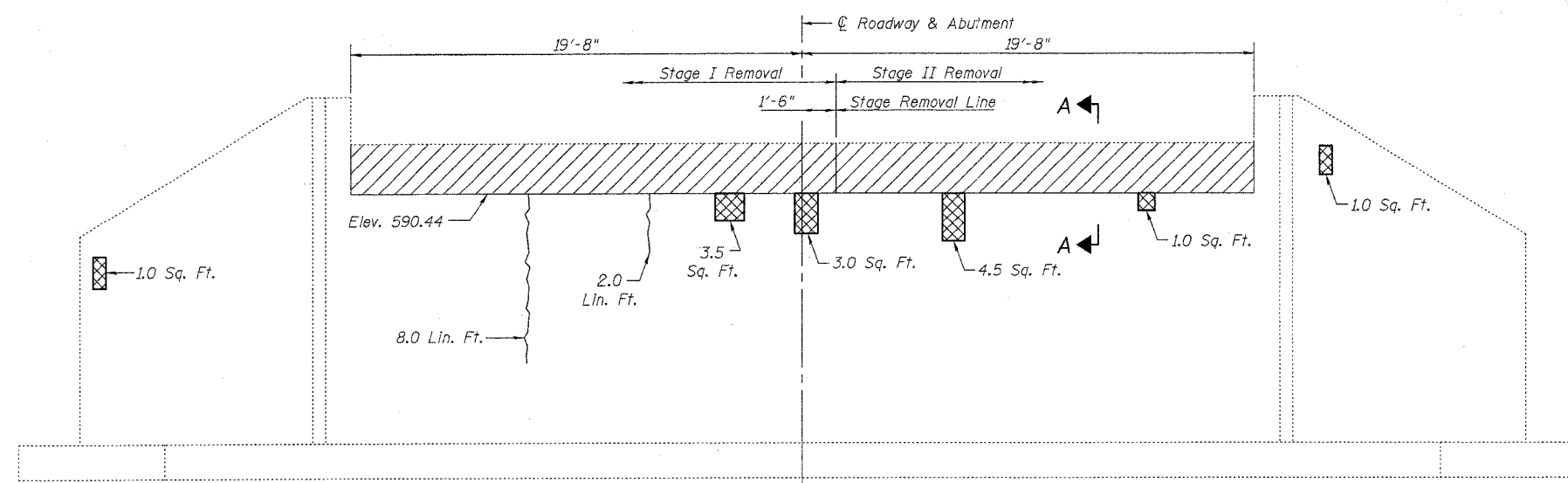


F.A.I.	SECTION	COUNTY	SHEET NO.	SHEET
55	27 BR	WILL	29	14
FED. ROAD DIST. NO. 7		ILLINOIS	FED. AID PROJECT-	

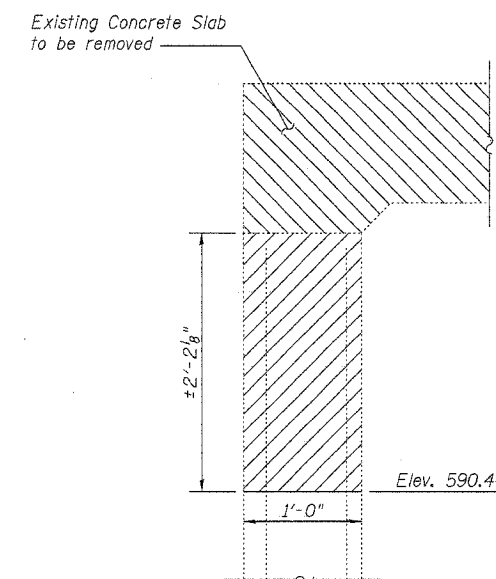
SHEET NO.
6 of 8

Contract No.: 62424

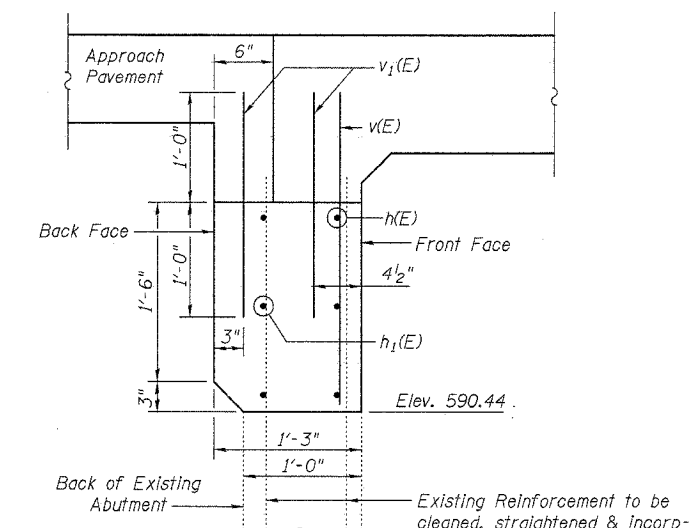


EXISTING ELEVATION

Looking South
(Existing slab not shown)



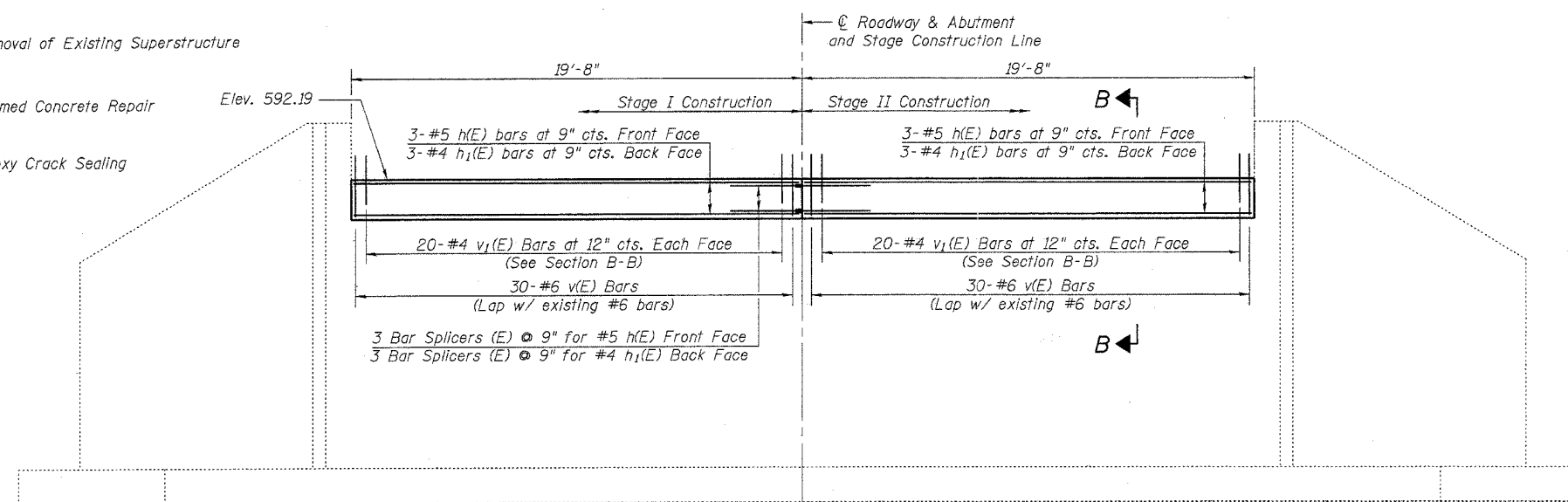
SECTION A-A



SECTION B-B

LEGEND

- Concrete Removal
- Removal of Existing Superstructure
- Formed Concrete Repair
- Epoxy Crack Sealing



PROPOSED ELEVATION

Looking South

NOTES

Hatched areas indicate Concrete Removal. Edges of Concrete Removal areas shall be sawcut 3/4" prior to the removal of the concrete.

Existing reinforcement bars to remain in place and be incorporated into new work shall be blast cleaned to gray metal and straightened. Blast cleaning and straightening shall be included with the cost of Concrete Removal.

Existing reinforcement bars which have lost 10% or more of their original diameter from corrosion shall be supplemented by new epoxy coated bars, of the same diameter, spliced in place. Furnishing and placing supplemental epoxy coated reinforcement bars shall be included with the cost of Reinforcement Bars, Epoxy Coated.

Care shall be exercised by the Contractor during and following removal operations to ensure that the existing rebar remaining in place are not damaged. All protruding rebar shall be cleaned, straightened, and properly positioned prior to concrete placement. Any rebar damaged during concrete removal shall be repaired or replaced using an approved Bar Splicer or Mechanical System. Cost included in "Concrete Removal".

Porous Granular Embankment shall be placed down to the elevation of the concrete removal line behind the abutment after the superstructure has been poured and the falsework removed.

BILL OF MATERIAL - SOUTH ABUTMENT

Bar	No.	Size	Length	Shape
h(E)	6	#5	19'-5"	—
h1(E)	6	#4	19'-5"	—
v(E)	60	#6	2'-7"	—
v1(E)	80	#4	2'-0"	—
Concrete Removal			Cu. Yd.	3.2
Structure Excavation			Cu. Yd.	5.6
Porous Granular Embankment			Cu. Yd.	5.6
Reinforcement Bars, Epoxy Coated			Pound	540
Concrete Structures			Cu. Yd.	3.1
Bar Splicers			Each	6
Epoxy Crack Sealing			Foot	10
Formed Concrete Repair, Depth Equal to or Less Than 5"			Sq. Ft.	14



REVISIONS	
NAME	DATE

ILLINOIS DEPARTMENT OF TRANSPORTATION
SOUTH ABUTMENT
FAI RTE. 55 (EAST FRONTAGE ROAD)
OVER SUNNYLAND DRAIN
SECTION 27 BR
WILL COUNTY
STATION 105+12.13
STRUCTURE NO. 099-0032
DATE: 11/10/04
DRAWN BY WJV
CHECKED BY BLB