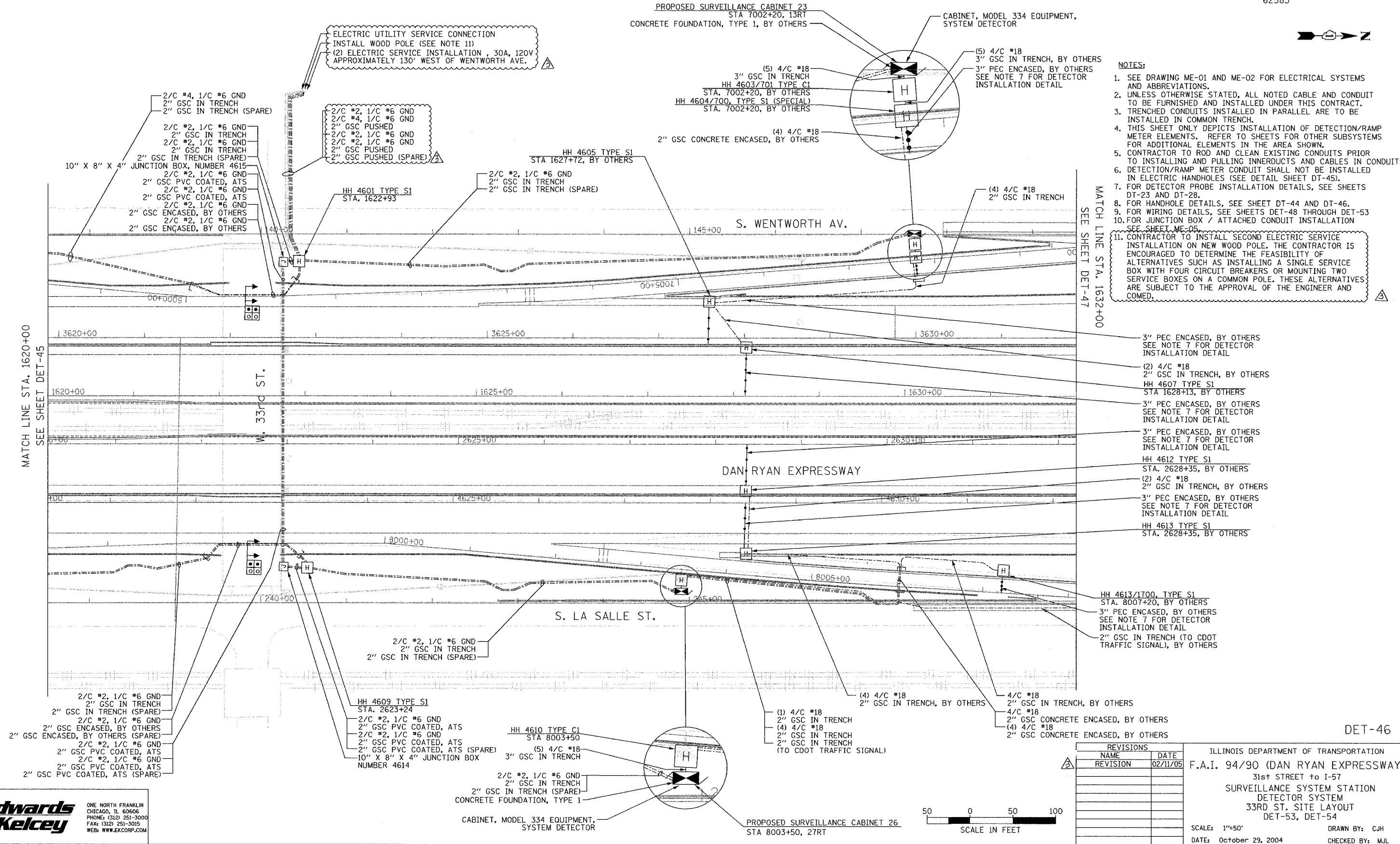


SECTION	COUNTY	TOTAL SHEETS	SHEET NO.
2003-0311	COOK	976	759
STA. 1620+00	TO STA. 1632+00		
FED. ROAD DIST. NO.	ILLINOIS	FED. AID PROJECT	
62583			

P:030009035VIT S:CAADD/DE 7020462E.SHT



- NOTES:**
- SEE DRAWING ME-01 AND ME-02 FOR ELECTRICAL SYSTEMS AND ABBREVIATIONS.
  - UNLESS OTHERWISE STATED, ALL NOTED CABLE AND CONDUIT TO BE FURNISHED AND INSTALLED UNDER THIS CONTRACT.
  - TRENCHED CONDUITS INSTALLED IN PARALLEL ARE TO BE INSTALLED IN COMMON TRENCH.
  - THIS SHEET ONLY DEPICTS INSTALLATION OF DETECTION/RAMP METER ELEMENTS. REFER TO SHEETS FOR OTHER SUBSYSTEMS FOR ADDITIONAL ELEMENTS IN THE AREA SHOWN.
  - CONTRACTOR TO ROD AND CLEAN EXISTING CONDUITS PRIOR TO INSTALLING AND PULLING INNERDUCTS AND CABLES IN CONDUITS.
  - DETECTION/RAMP METER CONDUIT SHALL NOT BE INSTALLED IN ELECTRIC HANDHOLES (SEE DETAIL SHEET DT-45).
  - FOR DETECTOR PROBE INSTALLATION DETAILS, SEE SHEETS DT-23 AND DT-28.
  - FOR HANDHOLE DETAILS, SEE SHEET DT-44 AND DT-46.
  - FOR WIRING DETAILS, SEE SHEETS DET-48 THROUGH DET-53.
  - FOR JUNCTION BOX / ATTACHED CONDUIT INSTALLATION SEE SHEET ME-05.
  - CONTRACTOR TO INSTALL SECOND ELECTRIC SERVICE INSTALLATION ON NEW WOOD POLE. THE CONTRACTOR IS ENCOURAGED TO DETERMINE THE FEASIBILITY OF ALTERNATIVES SUCH AS INSTALLING A SINGLE SERVICE BOX WITH FOUR CIRCUIT BREAKERS OR MOUNTING TWO SERVICE BOXES ON A COMMON POLE. THESE ALTERNATIVES ARE SUBJECT TO THE APPROVAL OF THE ENGINEER AND COMED.



MATCH LINE STA. 1632+00  
SEE SHEET DET-47

MATCH LINE STA. 1620+00  
SEE SHEET DET-45

DET-46

REVISIONS	
NAME	DATE
REVISION	02/11/05

ILLINOIS DEPARTMENT OF TRANSPORTATION  
 F.A.I. 94/90 (DAN RYAN EXPRESSWAY)  
 31st STREET TO I-57  
 SURVEILLANCE SYSTEM STATION  
 DETECTOR SYSTEM  
 33RD ST. SITE LAYOUT  
 DET-53, DET-54

SCALE: 1"=50'  
 DATE: October 29, 2004

DRAWN BY: CJH  
 CHECKED BY: MJL



**Edwards AND Kelcey**  
 ONE NORTH FRANKLIN  
 CHICAGO, IL 60606  
 PHONE: (312) 251-3000  
 FAX: (312) 251-3015  
 WEB: WWW.EKCORP.COM

08:43:39 AM 02/11/2005