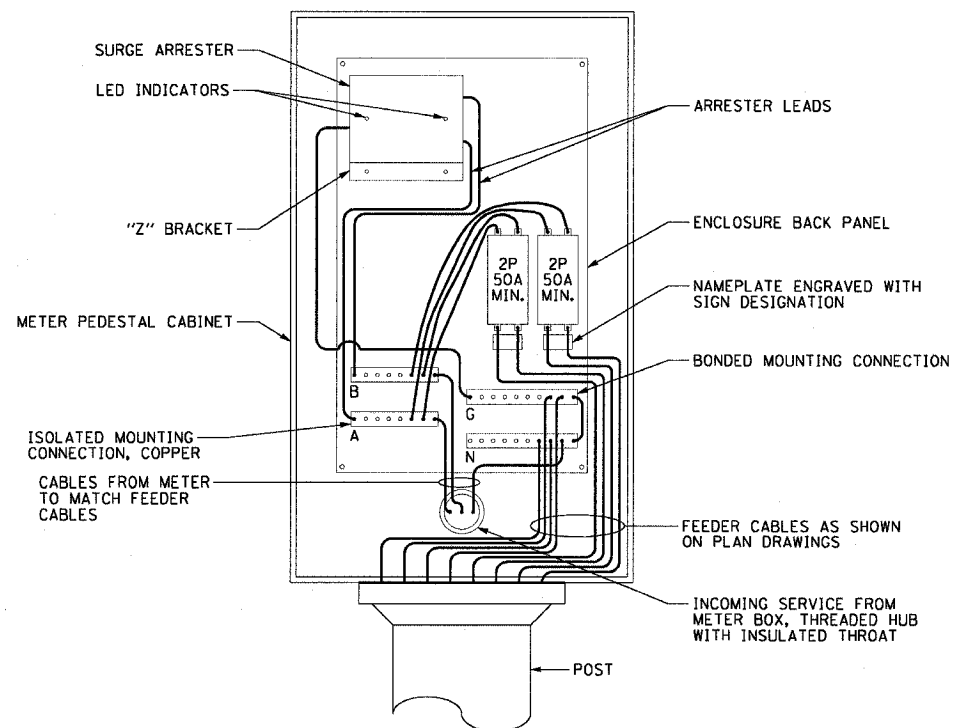


F.A.I. RTE.	SECTION	COUNTY	TOTAL SHEETS	SHEET NO.
90/94	2003-0311	COOK	976	901B
STA.	TO STA.			
FED. ROAD DIST. NO. 1 ILLINOIS FED. AID PROJECT				

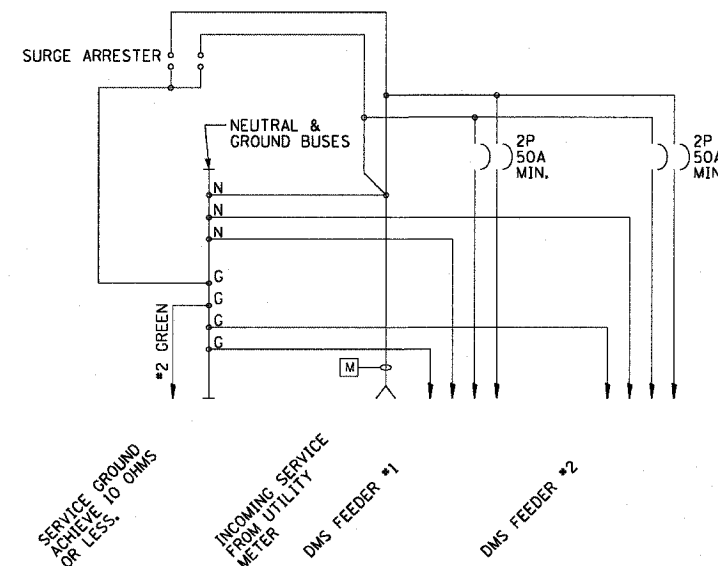
62583

**NOTES:**

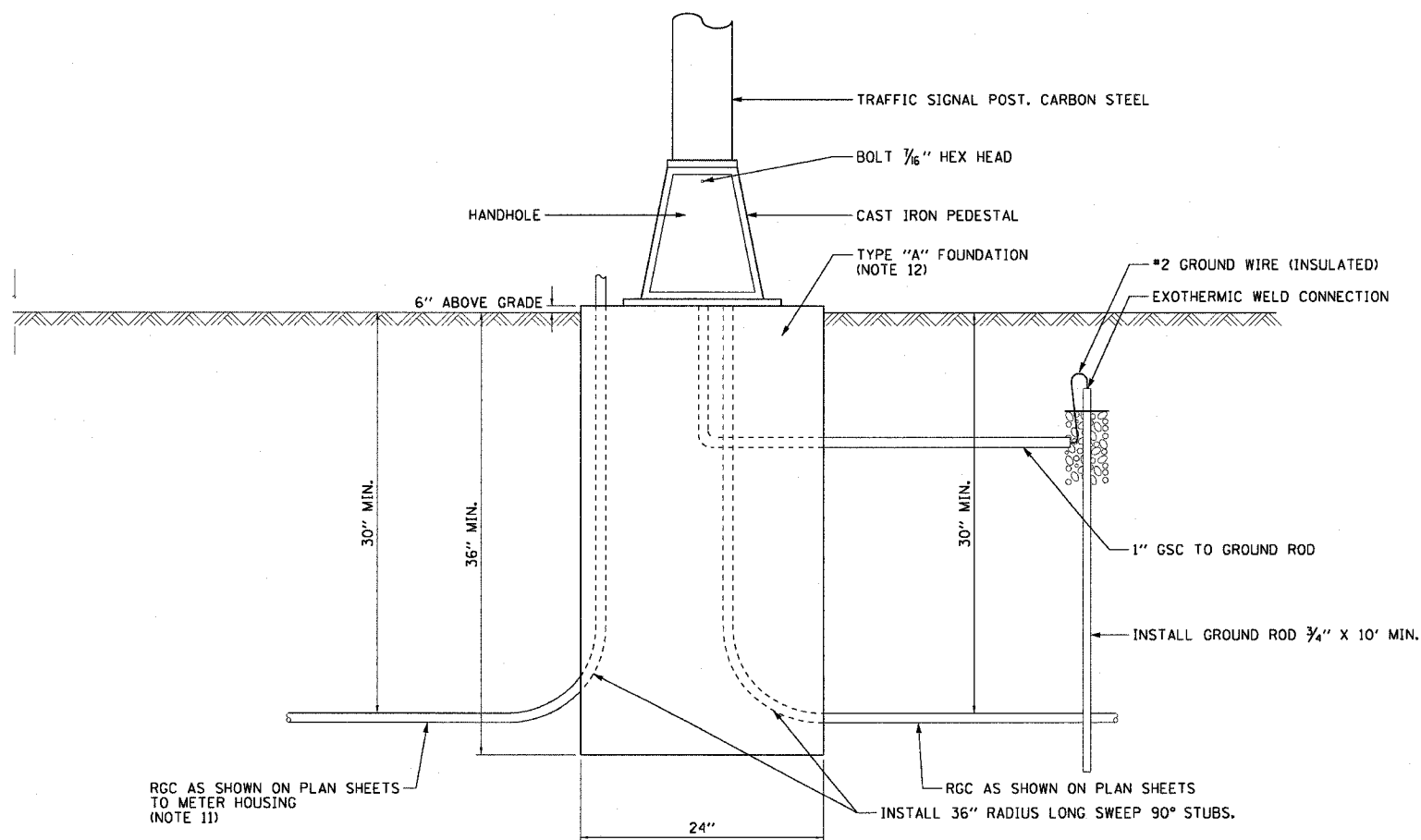
- BOND ALL GSC CONDUIT STUBS.
- GROUND ROD, GROUND WIRE, AND GROUND CONNECTIONS SHALL BE CONSIDERED INCIDENTAL TO THE COST OF THE CABINET.
- THE ELECTRIC SERVICE EQUIPMENT ASSEMBLY SHALL BE UL LABELED, SUITABLE FOR USE AS SERVICE EQUIPMENT.
- CIRCUIT BREAKERS SHALL BE THERMAL MAGNETIC BOLT-ON TYPE WITH A MINIMUM INTERRUPTING CAPACITY OF 25,000 SYMMETRICAL AMPERES AT 240 VOLTS. THEY SHALL BE LOCKABLE IN THE "OFF" POSITION FOR COMPLIANCE WITH OSHA LOCK-OUT/TAG-OUT REQUIREMENTS. HANDLES SHALL BE TRIP FREE. TRIP RATING TO BE 50A MINIMUM. LARGER TRIP RATING SHALL BE PROVIDED IF REQUIRED BY DMS MANUFACTURER.
- THE SURGE PROTECTOR SHALL BE SUITABLE FOR 240/120 VOLT SINGLE PHASE 60HZ AC ELECTRICAL SERVICE, WITH A SURGE ENERGY CAPABILITY OF >3600 JOULES OR BETTER AT 8/20 MICROSECONDS, RATED -40 TO 65 DEGREES C., WITH LED OPERATING INDICATORS, AND SHALL BE UL LISTED PER UL 1449, CUTLER-HAMMER CMOV 230L065XST OR APPROVED EQUAL. SURGE PROTECTOR SHALL BE WIRED FOR 120 V SERVICE. FOLLOW MANUFACTURER RECOMMENDED WIRING SPECIFICATIONS.
- BUS BARS, CONNECTORS AND LUGS SHALL BE COPPER, INSULATED AND ISOLATED AND CONFIGURED TO PREVENT SHORTED CONDITIONS FROM TIGHTENING TERMINATIONS, ETC. THE OVERALL BUS SECTION SHALL BE CONFIGURED BEHIND AN INSULATING BARRIER SHIELD WHICH IS REMOVABLE FOR ACCESS TO CONNECTIONS.
- THE HEADS OF GROUND SCREWS SHALL BE PAINTED GREEN. THE HEADS OF NEUTRAL SCREWS SHALL BE PAINTED WHITE.
- A PLASTIC LAMINATED LAYOUT AND CIRCUIT DIAGRAM SHALL BE AFFIXED TO THE INTERIOR SIDE OF THE ENCLOSURE DOOR.
- A 2-COLOR ENGRAVED PLASTIC NAMEPLATE, ATTACHED WITH SCREWS, AND ENGRAVED AS INDICATED, SHALL BE PROVIDED FOR EACH MAIN BREAKER.
- PROVIDE ON LAYOUT AND CIRCUIT DIAGRAM A BILL OF MATERIALS USED WITH CATALOG NUMBERS.
- CONDUIT TO METER HOUSING SHALL BE ROUTED DIRECTLY TO METER HOUSING AND BYPASS THE HANDHOLE.
- TYPE "A" FOUNDATION SHALL BE INSTALLED AND PAID FOR SEPARATELY AT ALL DMS LOCATIONS EXCEPT DMS-03 AND DMS-31. AT THESE TWO LOCATIONS FOUNDATIONS WILL BE INSTALLED BY OTHERS. CONTRACTOR MUST FURNISH ANCHOR BOLTS TO FOUNDATION INSTALLER AND COORDINATE WITH THEIR WORK.



**ELECTRIC SERVICE GENERAL LAYOUT**



**SCHEMATIC DIAGRAM**



RGC AS SHOWN ON PLAN SHEETS TO METER HOUSING (NOTE 11)

RGC AS SHOWN ON PLAN SHEETS

INSTALL 36" RADIUS LONG SWEEP 90° STUBS.

DT-06B

REVISIONS	
NAME	DATE
NEW DRAWING PER REVISION	2/11/05

ILLINOIS DEPARTMENT OF TRANSPORTATION  
F.A.I. 90/94 (DAN RYAN EXPRESSWAY)  
31st STREET TO I-57

**METER PEDESTAL CABINET DETAILS (PART 2)**

SCALE: NOT TO SCALE  
DATE: October 29, 2004  
DRAWN BY: CJM  
CHECKED BY: BMW

m:\p40466\Electrical\9117\SSTP\Contract 2\0170202082E2A87 03/10/2005 03:51:44 PM