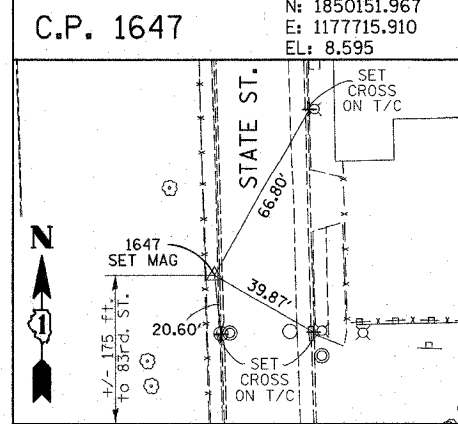
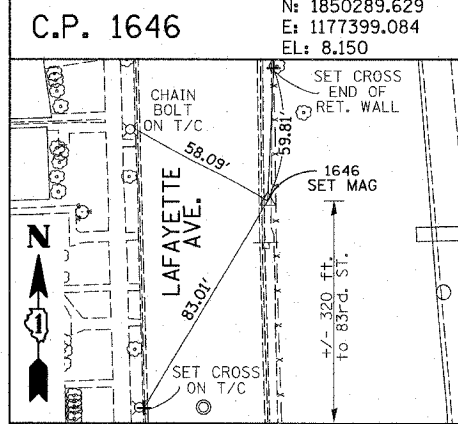
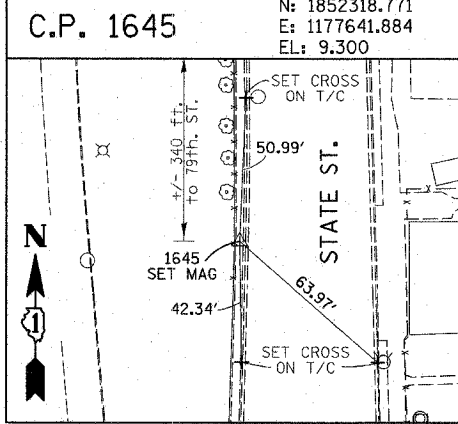
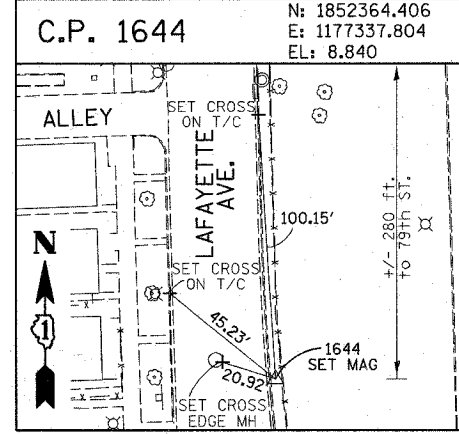
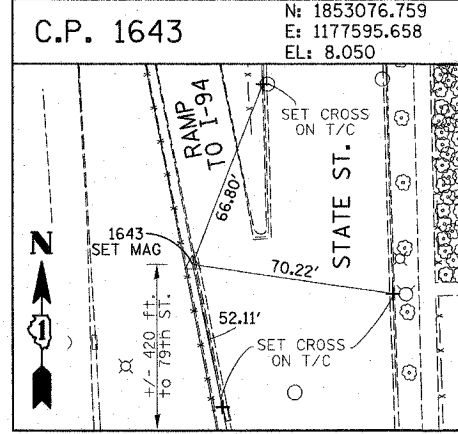
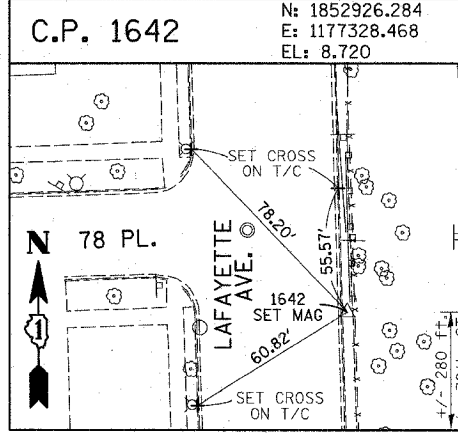
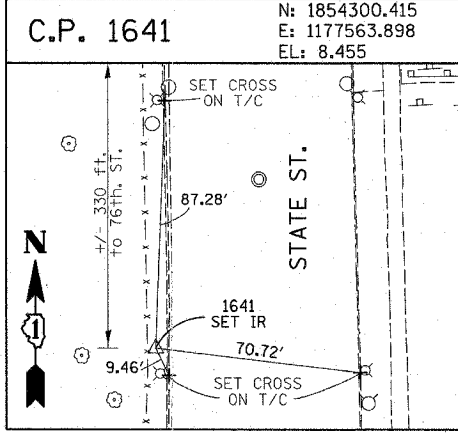
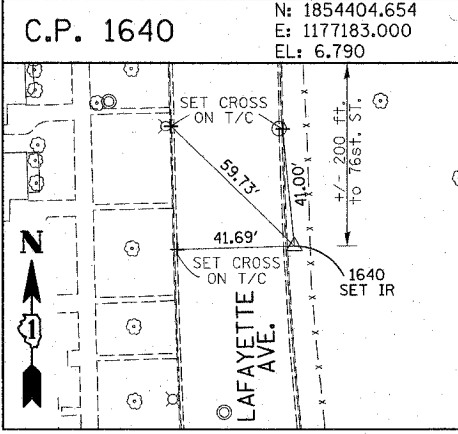
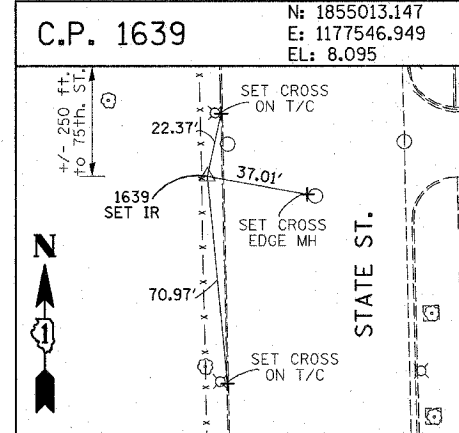
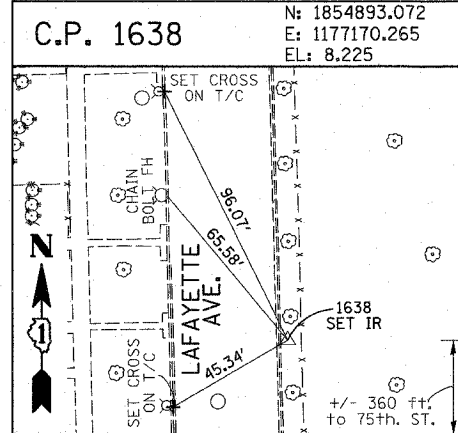
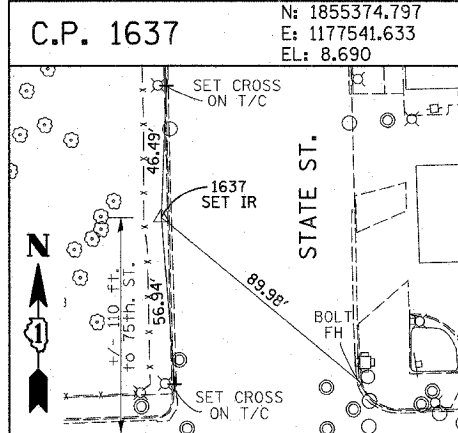
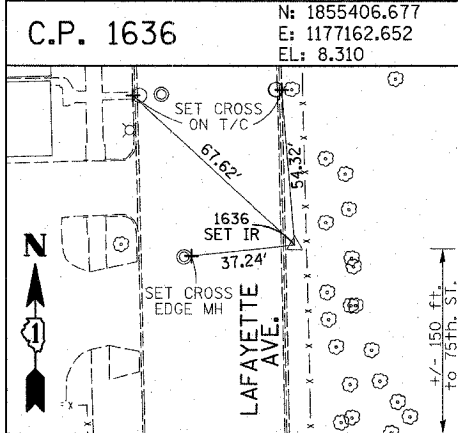
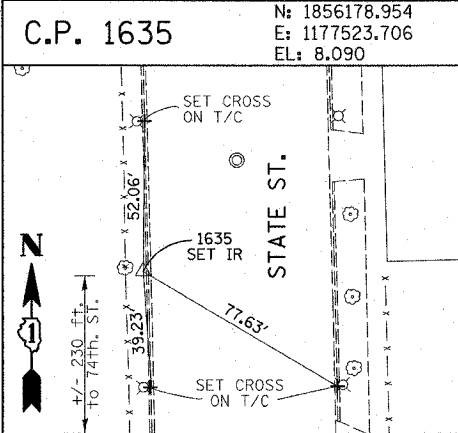
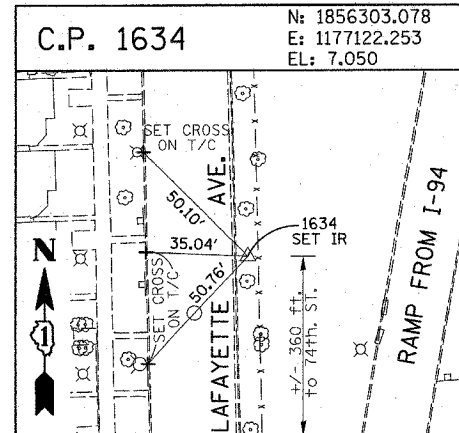
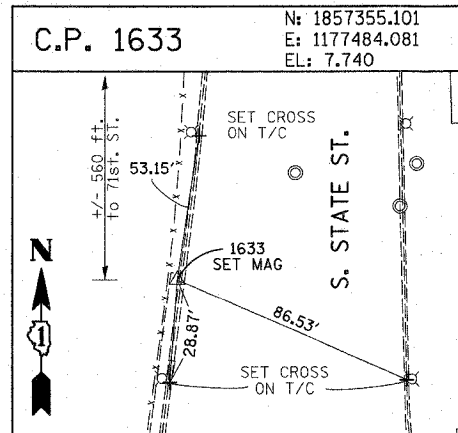
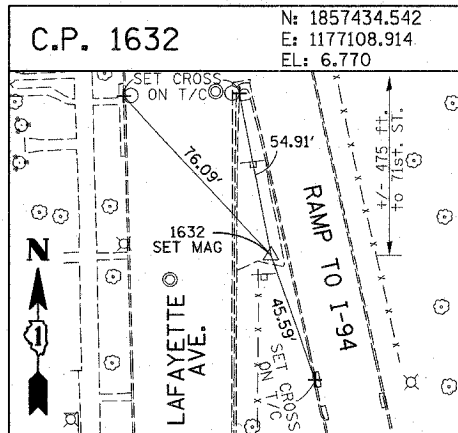
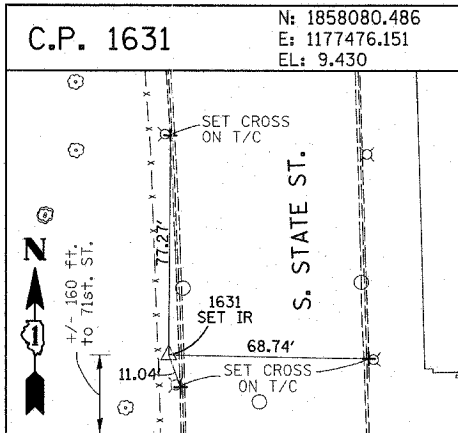
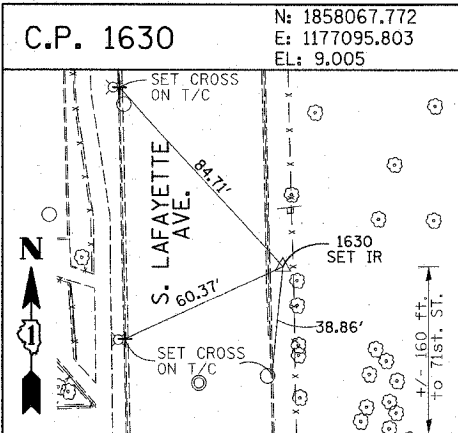


F.A.I. RTE.	SECTION	COUNTY	TOTAL SHEETS	SHEET NO.
90/94	2003-0311	COOK	976	16
STA.	TO STA.			
FED. ROAD DIST. NO.	ILLINOIS	FED. AID PROJECT	62583	



American Surveying Consultants, P.C.
 1100 N. Northshore Blvd., Suite 100, Schaumburg, IL 60196
 Phone: 630-295-1100 Fax: 630-295-1101

REVISIONS	
NAME	DATE

ILLINOIS DEPARTMENT OF TRANSPORTATION
 F.A.I. 90/94 (DAN RYAN EXPRESSWAY)
 31st STREET TO I-57
 SURVEY TIES FOR CONTROL POINTS
 SHEET 2 OF 4
 SCALE: 1"=30'
 DATE: OCTOBER 29, 2004
 DRAWN BY: GSP
 CHECKED BY: MMW

015-5400.PM
 10/15/2004
 015-5400.PM