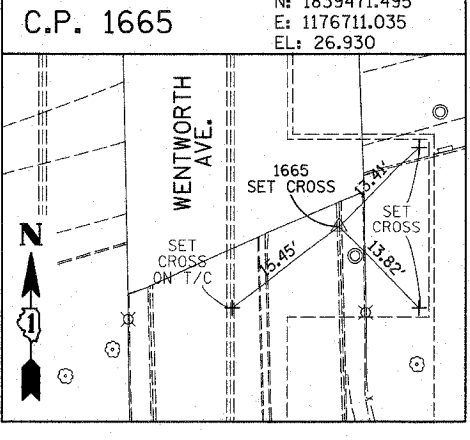
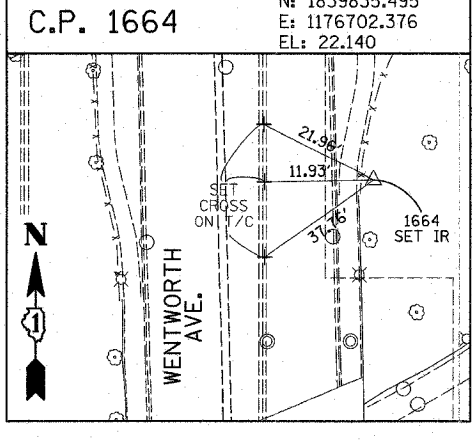
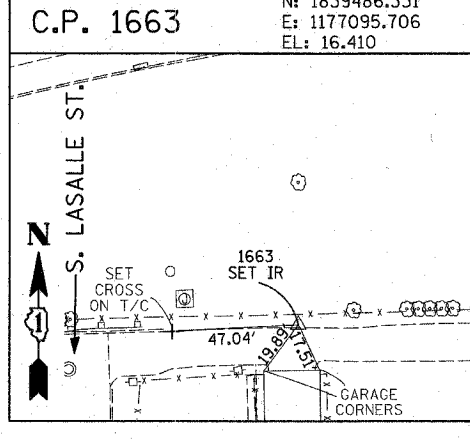
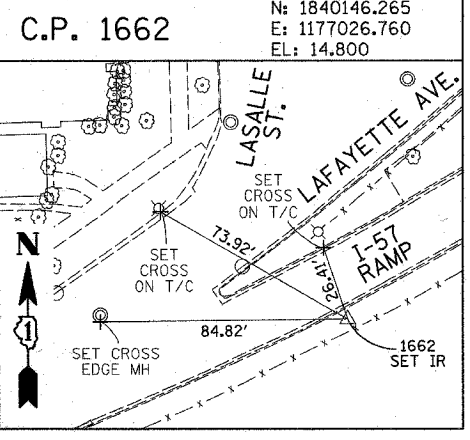
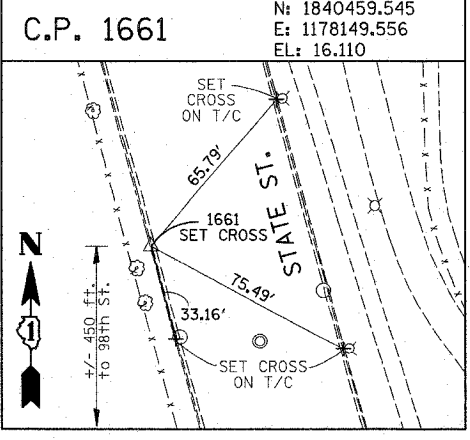
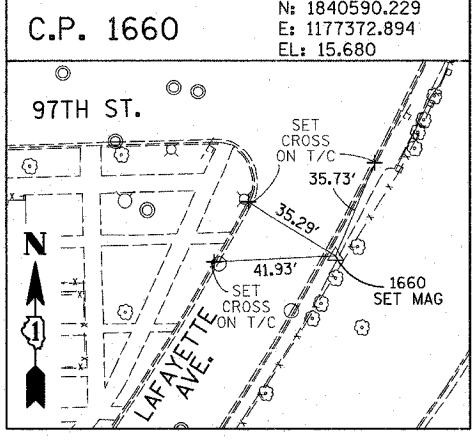
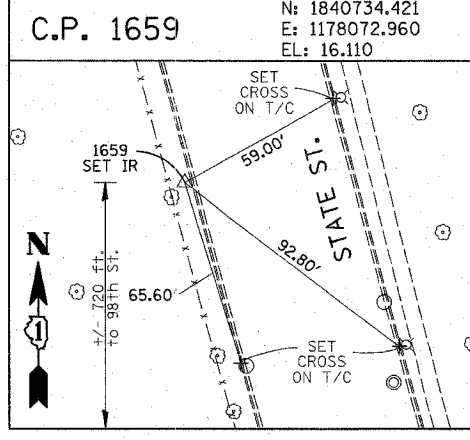
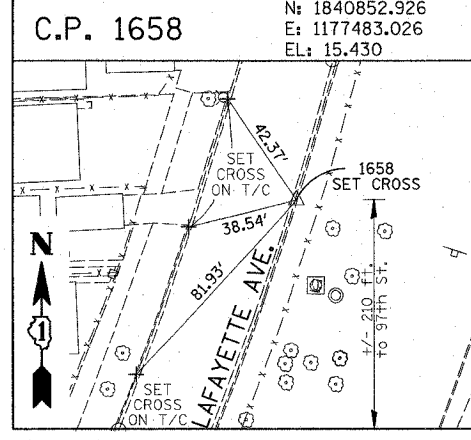
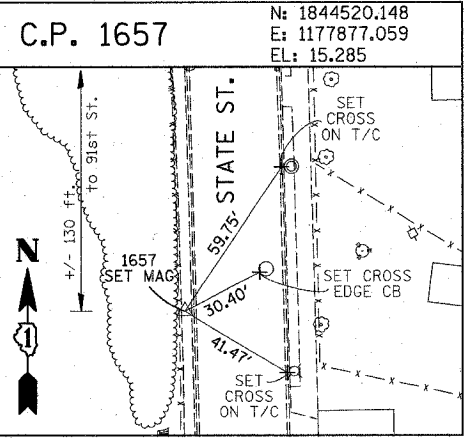
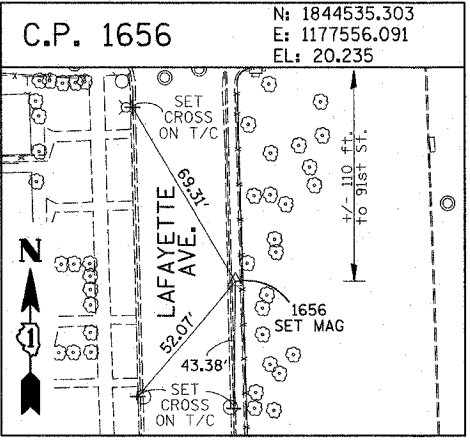
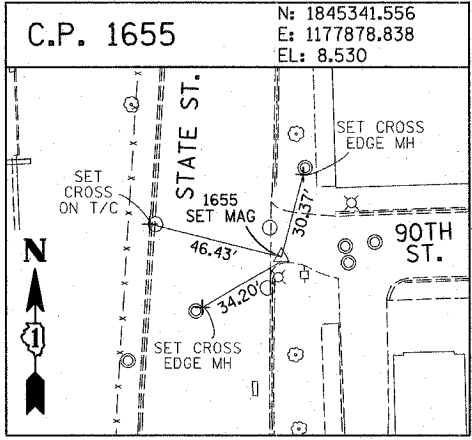
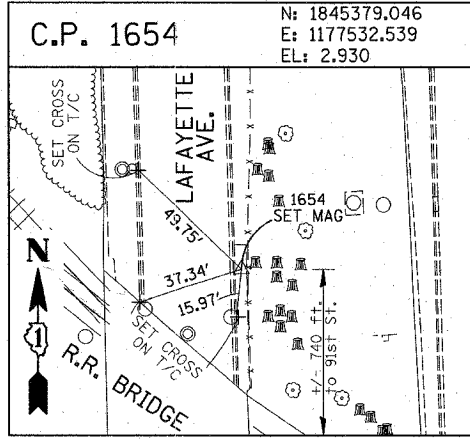
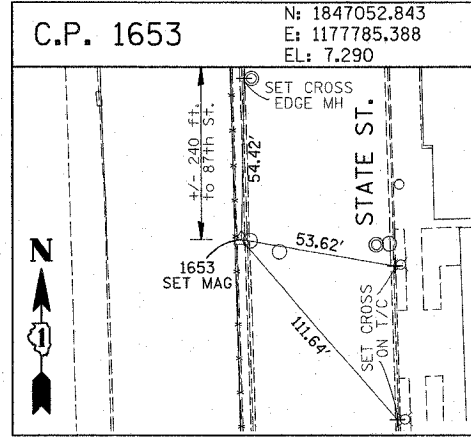
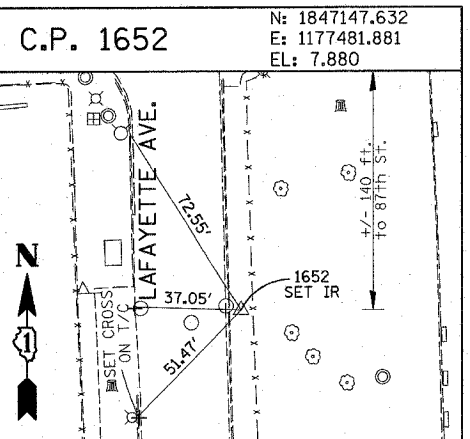
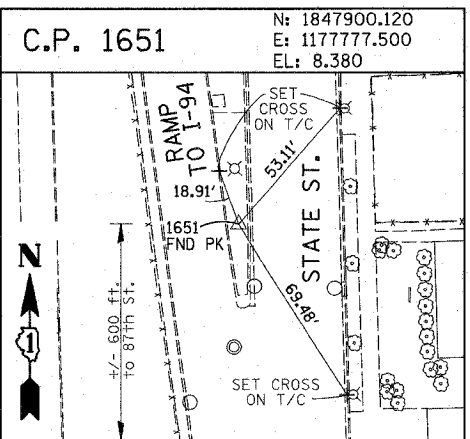
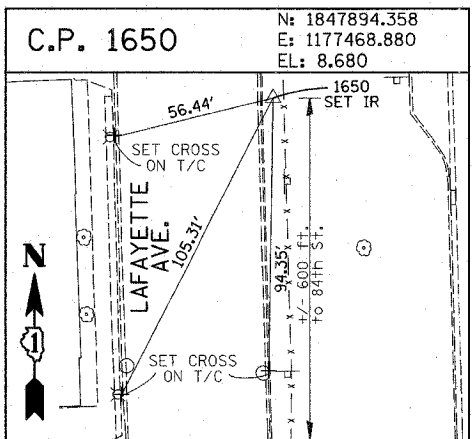
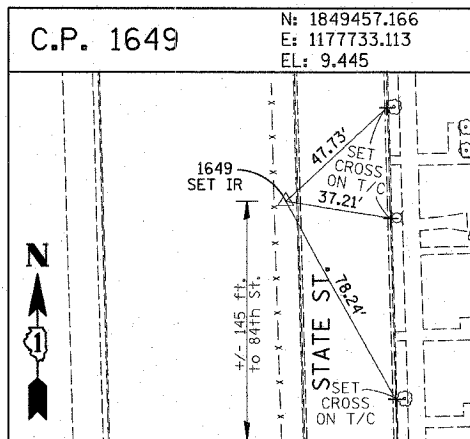
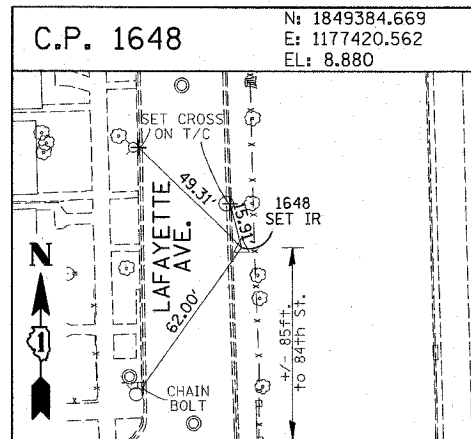


F.A.I. RTE.	SECTION	COUNTY	TOTAL SHEETS	SHEET NO.
90/94	2003-0311	COOK	976	17
STA.	TO STA.			
FED. ROAD DIST. NO.	ILLINOIS	FED. AID PROJECT		
62583				



American Surveying Consultants, P.C.
 1037 First St., Suite 200, Chicago, IL 60611
 312-467-2221

REVISIONS	
NAME	DATE

ILLINOIS DEPARTMENT OF TRANSPORTATION
 F.A.I. 90/94 (DAN RYAN EXPRESSWAY)
 31st STREET TO I-57

SURVEY TIES FOR CONTROL POINTS
 SHEET 3 OF 4

SCALE: 1"=30'
 DATE: OCTOBER 29, 2004

DRAWN BY: GSP
 CHECKED BY: MMW

10/15/2004 01:54:06 PM