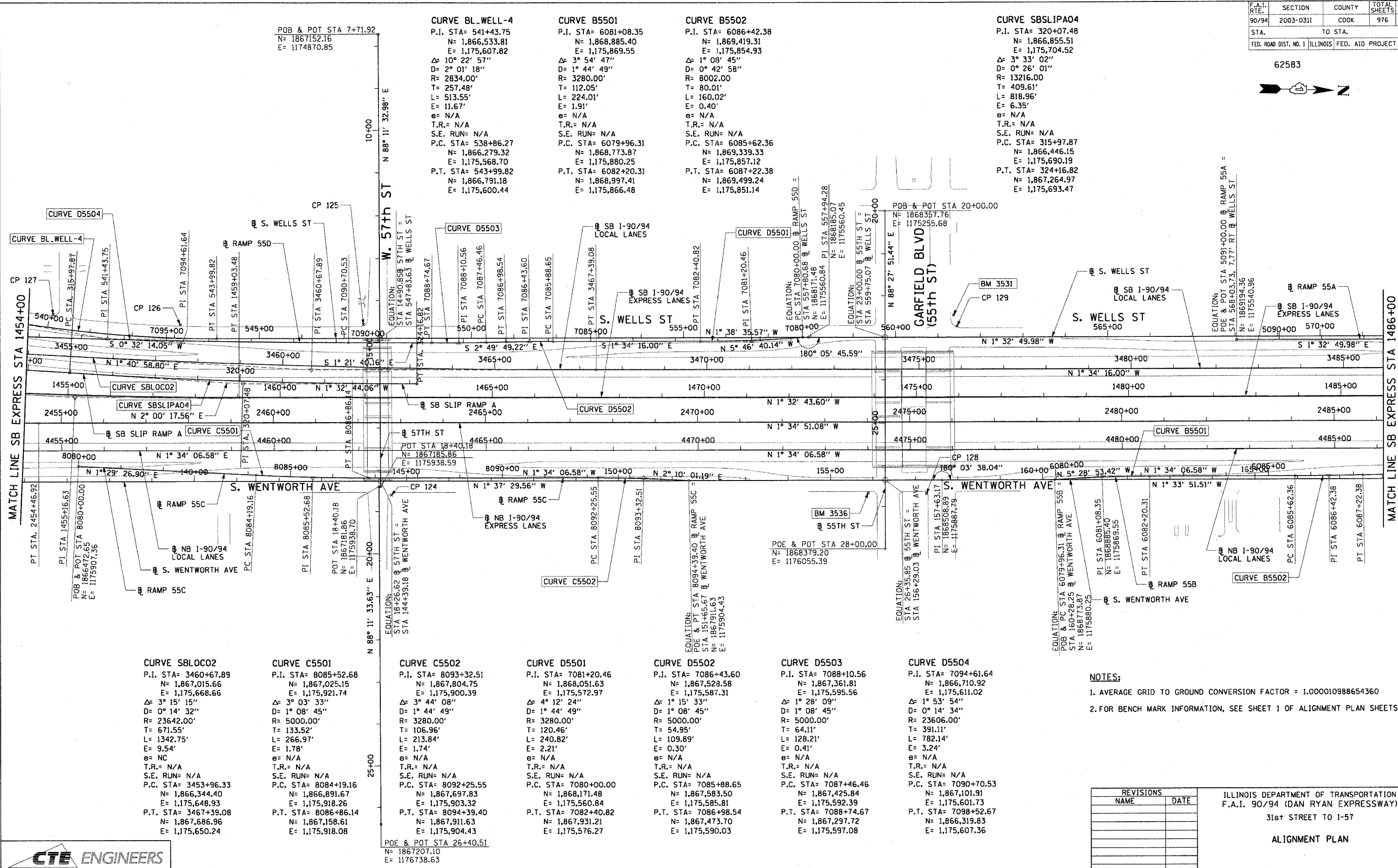


F.A.I. RT.:	SECTION	COUNTY	TOTAL SHEETS	SHEET NO.
90/94	2003-0311	COOK	976	23
STA.	TO STA.			
FED. ROAD DIST. NO. 1	ILLINOIS FED. AID PROJECT			

62583



**CURVE SBLOCO2**  
 P.I. STA= 3460+67.89  
 N= 1,867,015.66  
 E= 1,175,668.66  
 $\Delta$ = 3° 15' 15"  
 D= 0° 14' 32"  
 R= 23642.00'  
 T= 671.55'  
 L= 1342.75'  
 E= 9.54'  
 e= NC  
 T.R.= N/A  
 S.E. RUN= N/A  
 P.C. STA= 3453+96.33  
 N= 1,866,344.40  
 E= 1,175,648.93  
 P.T. STA= 3467+39.08  
 N= 1,867,686.96  
 E= 1,175,650.24

**CURVE C5501**  
 P.I. STA= 8085+52.68  
 N= 1,867,025.15  
 E= 1,175,921.74  
 $\Delta$ = 3° 03' 33"  
 D= 1° 08' 45"  
 R= 5000.00'  
 T= 106.96'  
 L= 266.97'  
 E= 1.74'  
 e= N/A  
 T.R.= N/A  
 S.E. RUN= N/A  
 P.C. STA= 8084+19.16  
 N= 1,866,891.67  
 E= 1,175,918.26  
 P.T. STA= 8086+86.14  
 N= 1,867,158.61  
 E= 1,175,918.08

**CURVE C5502**  
 P.I. STA= 8093+32.51  
 N= 1,867,804.75  
 E= 1,175,900.39  
 $\Delta$ = 3° 44' 08"  
 D= 1° 44' 49"  
 R= 3280.00'  
 T= 123.52'  
 L= 213.84'  
 E= 1.74'  
 e= N/A  
 T.R.= N/A  
 S.E. RUN= N/A  
 P.C. STA= 8092+25.55  
 N= 1,867,697.83  
 E= 1,175,903.32  
 P.T. STA= 8094+39.40  
 N= 1,867,911.63  
 E= 1,175,904.43

**CURVE D5501**  
 P.I. STA= 7081+20.46  
 N= 1,868,051.63  
 E= 1,175,572.97  
 $\Delta$ = 4° 12' 24"  
 D= 1° 44' 49"  
 R= 3280.00'  
 T= 123.52'  
 L= 240.82'  
 E= 2.21'  
 e= N/A  
 T.R.= N/A  
 S.E. RUN= N/A  
 P.C. STA= 7080+00.00  
 N= 1,868,171.48  
 E= 1,175,560.84  
 P.T. STA= 7082+40.82  
 N= 1,867,931.21  
 E= 1,175,576.27

**CURVE D5502**  
 P.I. STA= 7086+43.60  
 N= 1,867,528.58  
 E= 1,175,587.31  
 $\Delta$ = 1° 15' 33"  
 D= 1° 08' 45"  
 R= 5000.00'  
 T= 64.11'  
 L= 109.89'  
 E= 0.41'  
 e= N/A  
 T.R.= N/A  
 S.E. RUN= N/A  
 P.C. STA= 7085+88.65  
 N= 1,867,583.50  
 E= 1,175,585.81  
 P.T. STA= 7088+74.67  
 N= 1,867,473.70  
 E= 1,175,590.03

**CURVE D5503**  
 P.I. STA= 7088+20.46  
 N= 1,867,361.81  
 E= 1,175,595.56  
 $\Delta$ = 1° 28' 09"  
 D= 1° 08' 45"  
 R= 5000.00'  
 T= 64.11'  
 L= 128.21'  
 E= 0.41'  
 e= N/A  
 T.R.= N/A  
 S.E. RUN= N/A  
 P.C. STA= 7087+46.46  
 N= 1,867,425.84  
 E= 1,175,592.39  
 P.T. STA= 7088+74.67  
 N= 1,867,297.72  
 E= 1,175,597.08

**CURVE D5504**  
 P.I. STA= 7094+61.64  
 N= 1,866,710.92  
 E= 1,175,611.02  
 $\Delta$ = 1° 53' 54"  
 D= 0° 14' 34"  
 R= 23606.00'  
 T= 391.11'  
 L= 782.14'  
 E= 3.24'  
 e= N/A  
 T.R.= N/A  
 S.E. RUN= N/A  
 P.C. STA= 7090+70.53  
 N= 1,867,101.91  
 E= 1,175,601.73  
 P.T. STA= 7098+52.67  
 N= 1,866,319.83  
 E= 1,175,607.36

**NOTES:**

1. AVERAGE GRID TO GROUND CONVERSION FACTOR = 1.000010988654360
2. FOR BENCH MARK INFORMATION, SEE SHEET 1 OF ALIGNMENT PLAN SHEETS.

REVISIONS	
NAME	DATE

ILLINOIS DEPARTMENT OF TRANSPORTATION  
 F.A.I. 90/94 (DAN RYAN EXPRESSWAY)  
 31st STREET TO I-57  
**ALIGNMENT PLAN**

SCALE: 1"=100'  
 DATE: October 29, 2004  
 DRAWN BY: NJH/AMM  
 CHECKED BY: JAL/MS



I:\Projects\90\94\Drawings\90-94-0311\90-94-0311-23.dwg  
 10/15/2004 03:54:41 PM