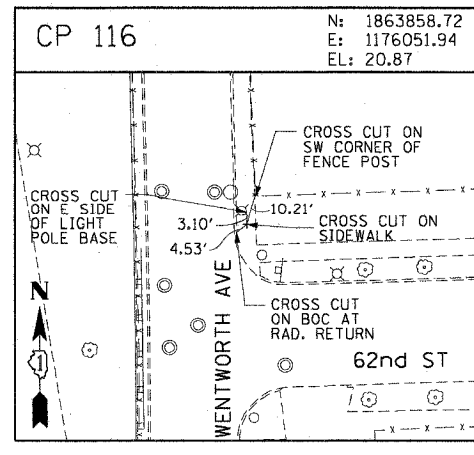
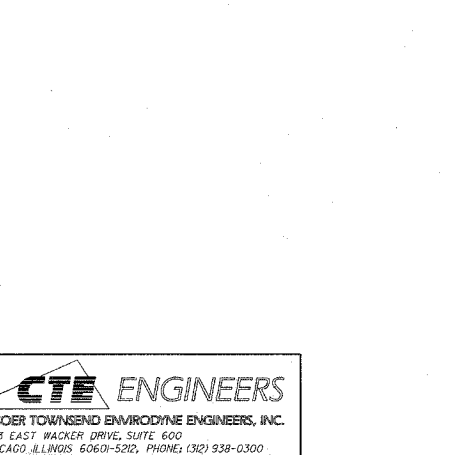
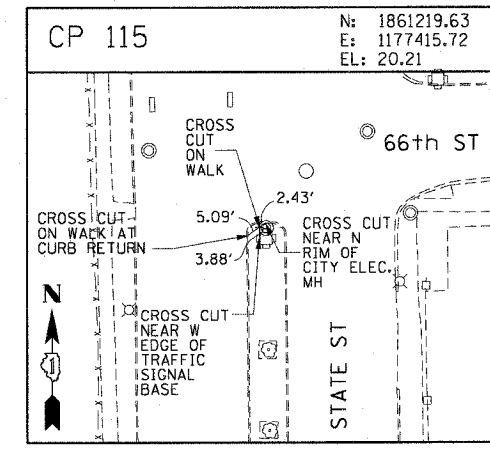
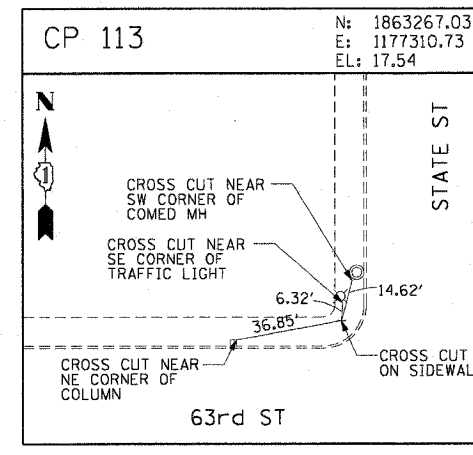
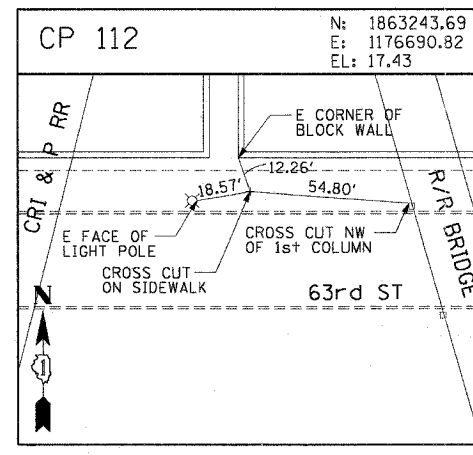
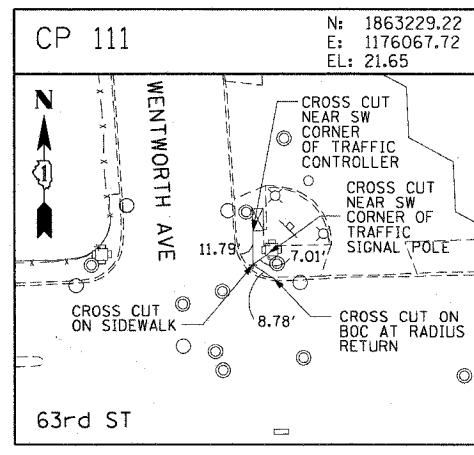
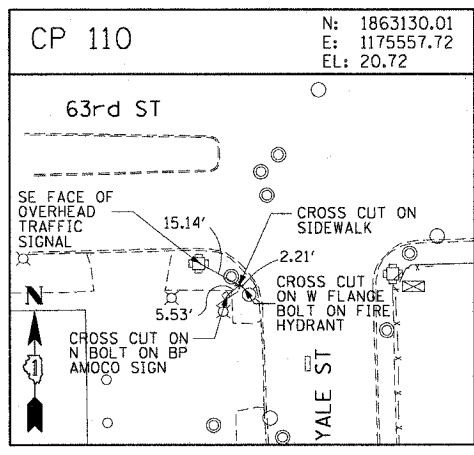
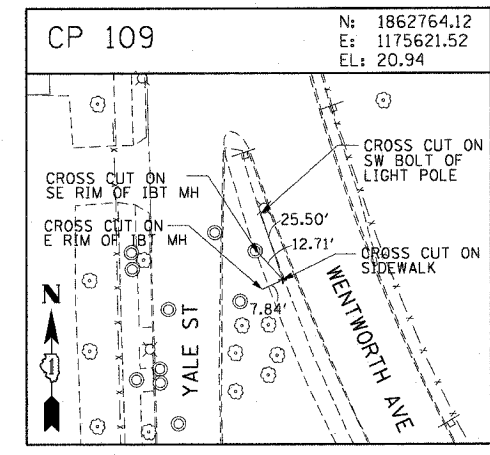
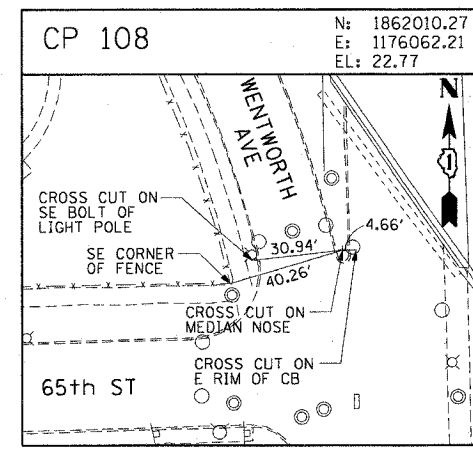
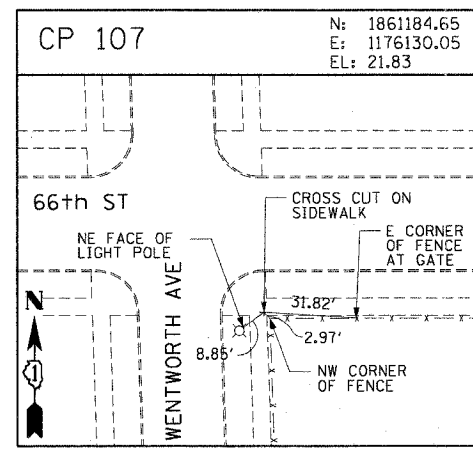
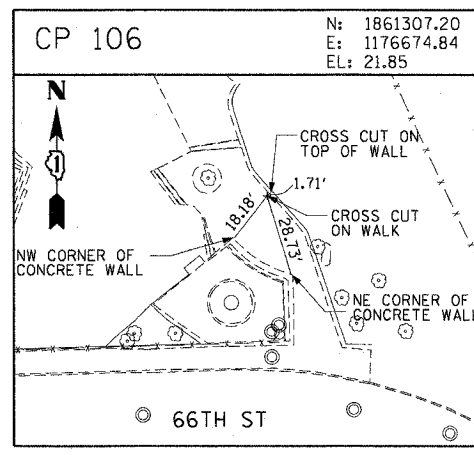
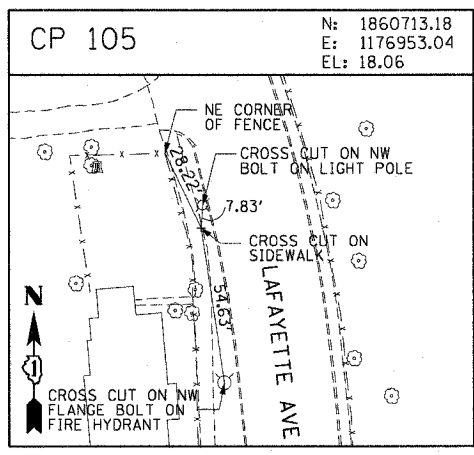
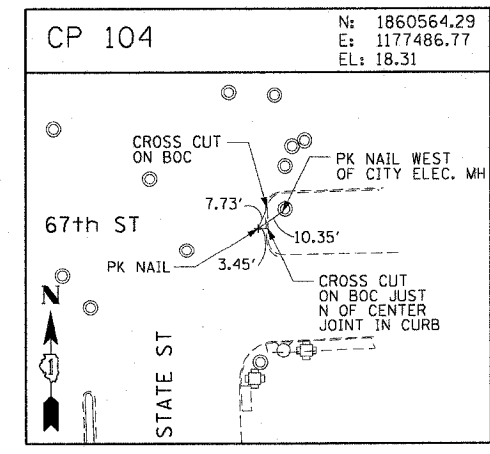
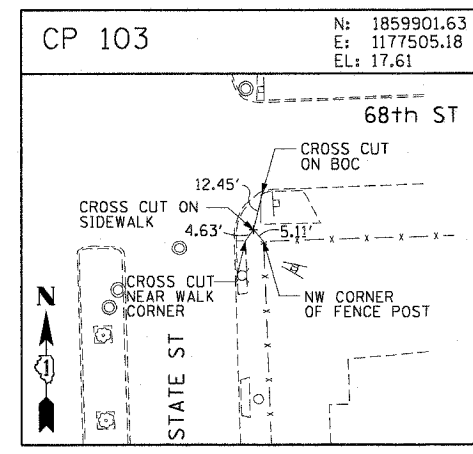
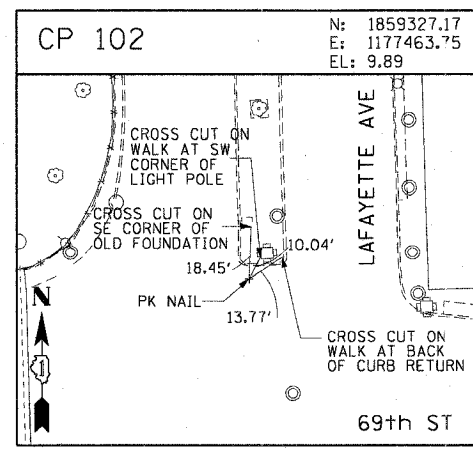
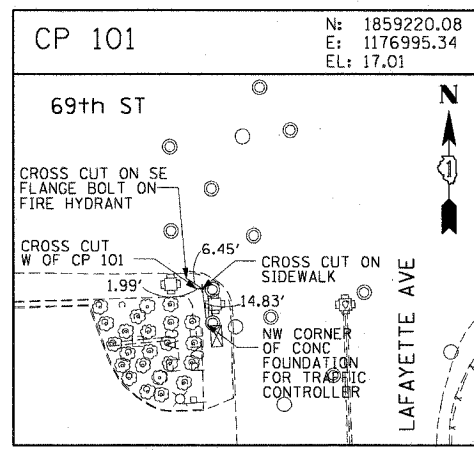
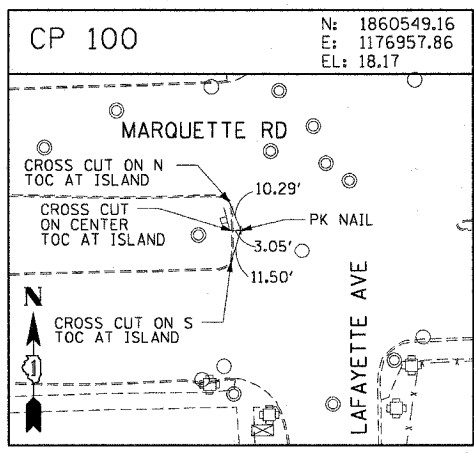


| | | | | |
|-----------------------|-----------|----------|------------------|-----------|
| F.A.I. RTE. | SECTION | COUNTY | TOTAL SHEETS | SHEET NO. |
| 90/94 | 2003-0311 | COOK | 976 | 26 |
| STA. | | TO STA. | | |
| FED. ROAD DIST. NO. 1 | | ILLINOIS | FED. AID PROJECT | |

62583



| REVISIONS | |
|-----------|------|
| NAME | DATE |
| | |
| | |
| | |
| | |
| | |

ILLINOIS DEPARTMENT OF TRANSPORTATION
 F.A.I. 90/94 (DAN RYAN EXPRESSWAY)
 31st STREET TO I-57

SURVEY TIES AND CONTROL POINTS

SCALE: 1"=30'
 DATE: October 29, 2004

DRAWN BY: MRX
 CHECKED BY: JAL

m:\p\463\elec\96\cont\2\bus\cont\2\align\cont\2\102\102.sst 03/15/2004 03:51:43 PM