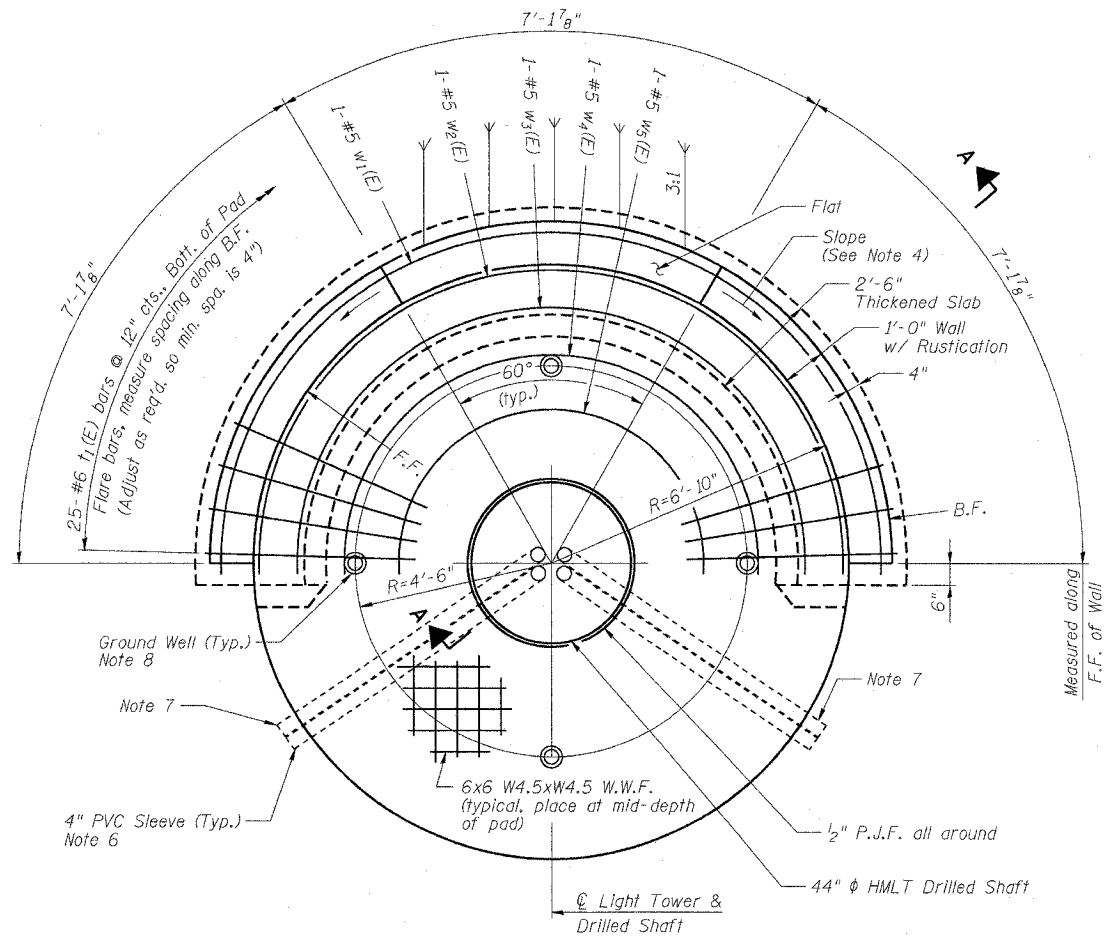
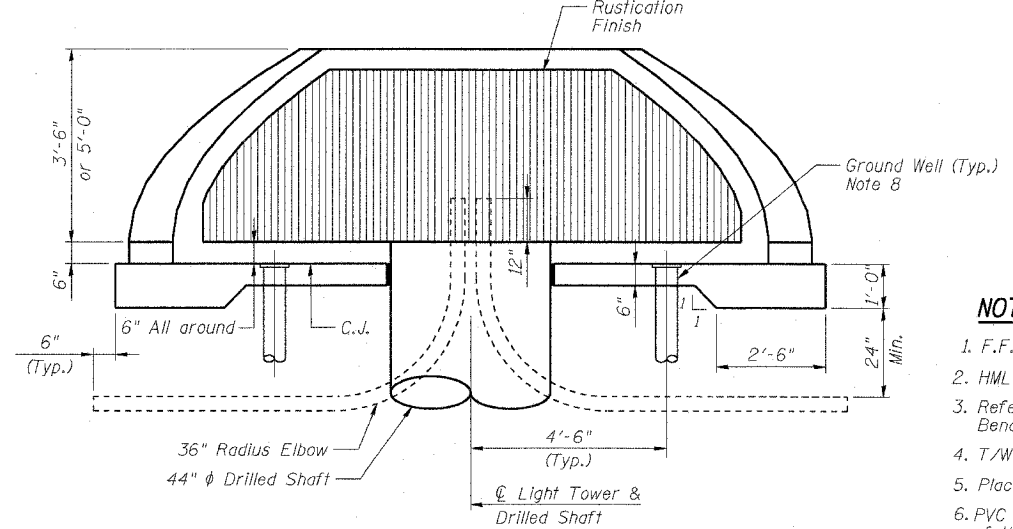


F.A.I. RT. NO.	SECTION	COUNTY	TOTAL SHEETS	SHEET NO.
90/94	2003-0311	COOK	976	54
STA.	TO STA.			
FED. ROAD DIST. NO. 1   ILLINOIS FED. AID PROJECT				

62583



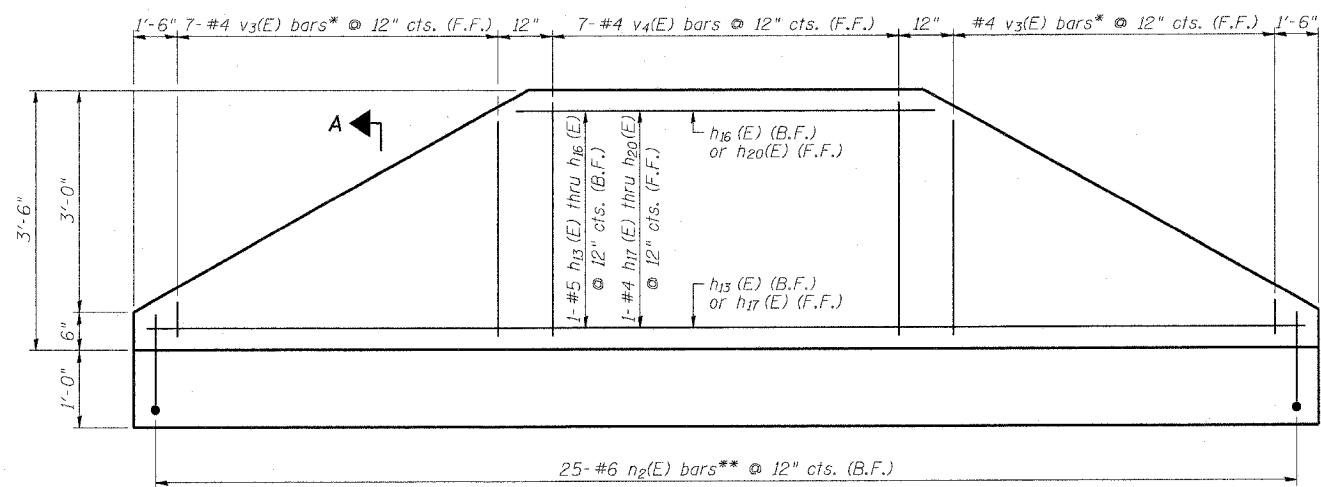
**PLAN VIEW**  
Place Bars w<sub>1</sub>(E) thru w<sub>5</sub>(E) @ 12\"/>



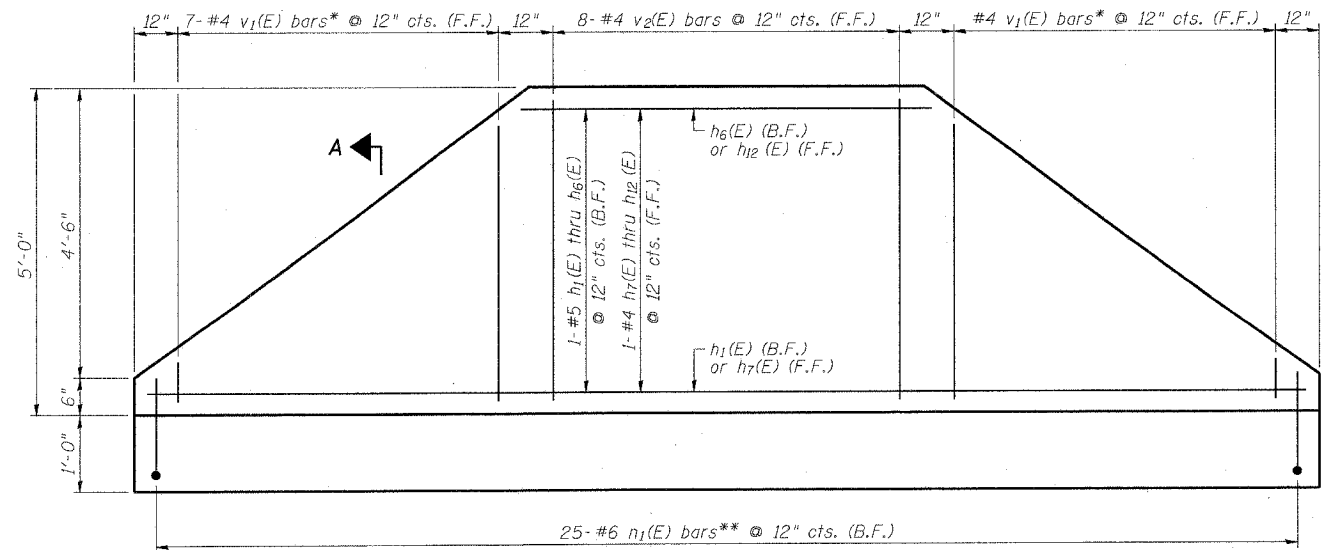
**ELEVATION VIEW**  
(HMLT not shown for clarity)

**NOTES**

- F.F. and B.F. denote Front Face and Back Face, respectively.
- HMLT denotes High Mast Light Tower.
- Refer to HMLT Service Pad & Retaining Wall Details 2 for Bar Bending Diagrams, Bill of Material, Bar Sections and Details.
- T/Wall slope is constant along the arc of any given radius.
- Place horizontal tails of n<sub>1</sub>(E) & n<sub>2</sub>(E) bars radially.
- PVC sleeves must be extended 6 inches beyond the edge of the concrete pad.
- PVC sleeve for CCTV camera power feed (future). Sleeve must be capped unless noted otherwise on the plans.
- Install ground wells 4'-6\"/>



**3'-6\"/>**



**5'-0\"/>**

BOWMAN, BARRETT & ASSOCIATES INC.  
CONSULTING ENGINEERS  
150 EAST RANDOLPH STREET SUITE 2650 CHICAGO, ILLINOIS 60601  
JOB NO. 668

REVISIONS	
NAME	DATE

ILLINOIS DEPARTMENT OF TRANSPORTATION  
F.A.I. 90/94 (DAN RYAN EXPRESSWAY)  
31st STREET TO I-57  
**HIGH MAST LIGHT TOWER SERVICE PAD  
& RETAINING WALL DETAILS 1**  
SCALE: NOT TO SCALE  
DATE: October 29, 2004  
DRAWN BY:  
CHECKED BY:

ME-13A 01/15/2004 01:59:58 PM