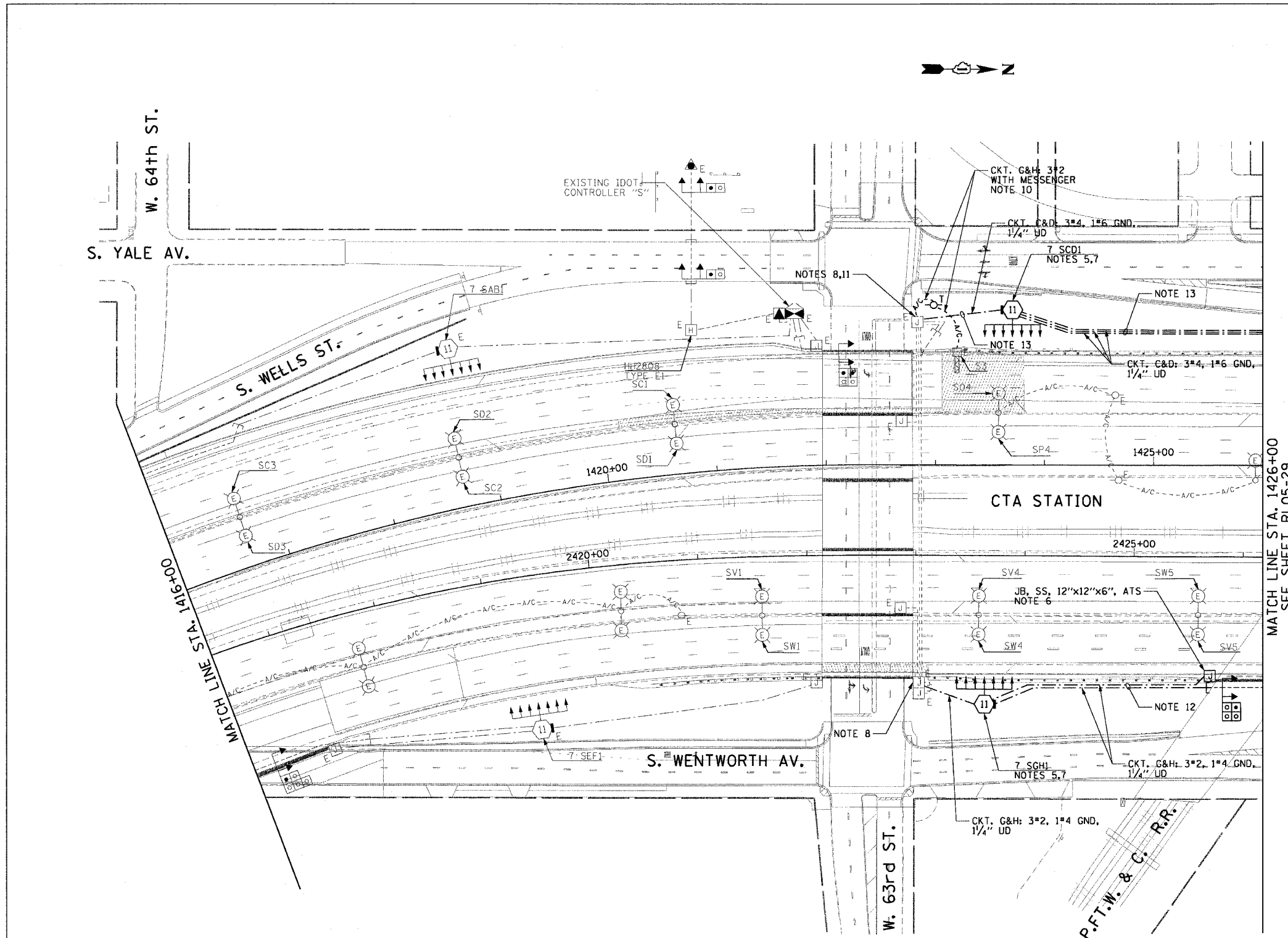


F.A.I. RT.	SECTION	COUNTY	TOTAL SHEETS	SHEET NO.
90/94	2003-0311	COOK	976	143
STA. 1416+00.00		TO STA. 1426+00.00		
FED. ROAD DIST. NO. 1		ILLINOIS FED. AID PROJECT		

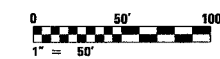
62583

**NOTES:**

- SEE DRAWINGS ME-01 AND ME-02 FOR ELECTRICAL SYMBOLS AND ABBREVIATIONS.
- COORDINATE ALL WORK WITH IDOT CONTRACT NO. 62693.
- UNLESS NOTED OTHERWISE, ALL ITEMS AND WORK SHOWN IN HEAVY LINE WEIGHT ON THIS DRAWING ARE PROPOSED ITEMS AND WORK.
- SEE DRAWING ES-04 FOR HIGH MAST LIGHT TOWER SCHEDULE.
- HIGH MAST TOWER FOUNDATION WILL BE INSTALLED BY OTHERS IN IDOT CONTRACT NO. 62693.
- JUNCTION BOX MOUNTED ON OVERPASS STRUCTURE FOR UNDERPASS LIGHTING POWER FEED MUST BE INSTALLED AS SHOWN ON DETAILS ME-06A AND ME-14C, UNLESS NOTED OTHERWISE. SEE DRAWING UL-26 FOR P.F.T.W. & C. RAILROAD UNDERPASS LIGHTING PLANS.
- THE CONDUIT FOR ALL GROUND MOUNTED HIGH MAST TOWERS MUST BE INSTALLED AS SHOWN ON DRAWING ME-13.
- SPLICE NEW LIGHTING CIRCUIT CABLES TO THE CORRESPONDING EXISTING LIGHTING CIRCUITS LOCATED WITHIN THE EXISTING JUNCTION BOX.
- RUN PARALLEL RACEWAYS IN COMMON TRENCH. THE FINAL INSTALLATION LOCATIONS OF THE LIGHTING RACEWAYS MUST BE COORDINATED WITH THE RACEWAYS SHOWN ON THE SURVEILLANCE PLANS.
- PROVIDE A TEMPORARY POWER FEED TO THE EXISTING SIGN TRUSS STRUCTURE LIGHTING UNITS. SEE DRAWING ME-25 FOR TEMPORARY POWER FEED TO SIGN STRUCTURE DETAILS.
- CONTRACTOR MUST DRILL AN ACCESS HOLE ON THE BOTTOM OF THE EXISTING JUNCTION BOX FOR THE TEMPORARY AERIAL CABLES. PROVIDE A WEATHERTIGHT SEAL WHERE THE AERIAL CABLES ENTER THE JUNCTION BOX.
- ALL UNIT DUCT BETWEEN HIGH MAST LIGHT TOWERS 7 SGH1 AND 7 SGH2 MUST BE INSTALLED A MAXIMUM OF 30'-0" FROM EDGE OF PAVEMENT TO AVOID CONFLICT WITH FUTURE IDOT CONTRACT NO. 62301.
- ALL UNIT DUCT BETWEEN THE WEST 63rd ST. ABUTMENT AND STA. 1427+77 MUST BE INSTALLED AT A MINIMUM TRENCH DEPTH OF 5'-0" TO AVOID CONFLICTS WITH FUTURE IDOT CONTRACT NO. 62303.



MATCH LINE STA. 1426+00  
SEE SHEET RL05-29



RL05-28

**CTE ENGINEERS**  
CONSOER TOWNSEND ENVIRONMENTAL ENGINEERS, INC.  
303 EAST WACKER DRIVE, SUITE 600  
CHICAGO ILLINOIS 60601-5202, PHONE: (312) 938-0300

REVISIONS		ILLINOIS DEPARTMENT OF TRANSPORTATION F.A.I. 90/94 (DAN RYAN EXPRESSWAY) 31st STREET TO I-57
NAME	DATE	
		ROADWAY LIGHTING PLANS PROPOSED IMPROVEMENTS 2005
SCALE: 1"=50'		DRAWN BY: CJM
DATE: October 29, 2004		CHECKED BY: WDS

m:\p0468\electrical\entr\28\stn\contract 2\2005\10202820\_05.dwg 11/19/2004 09:44 PM