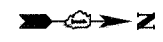
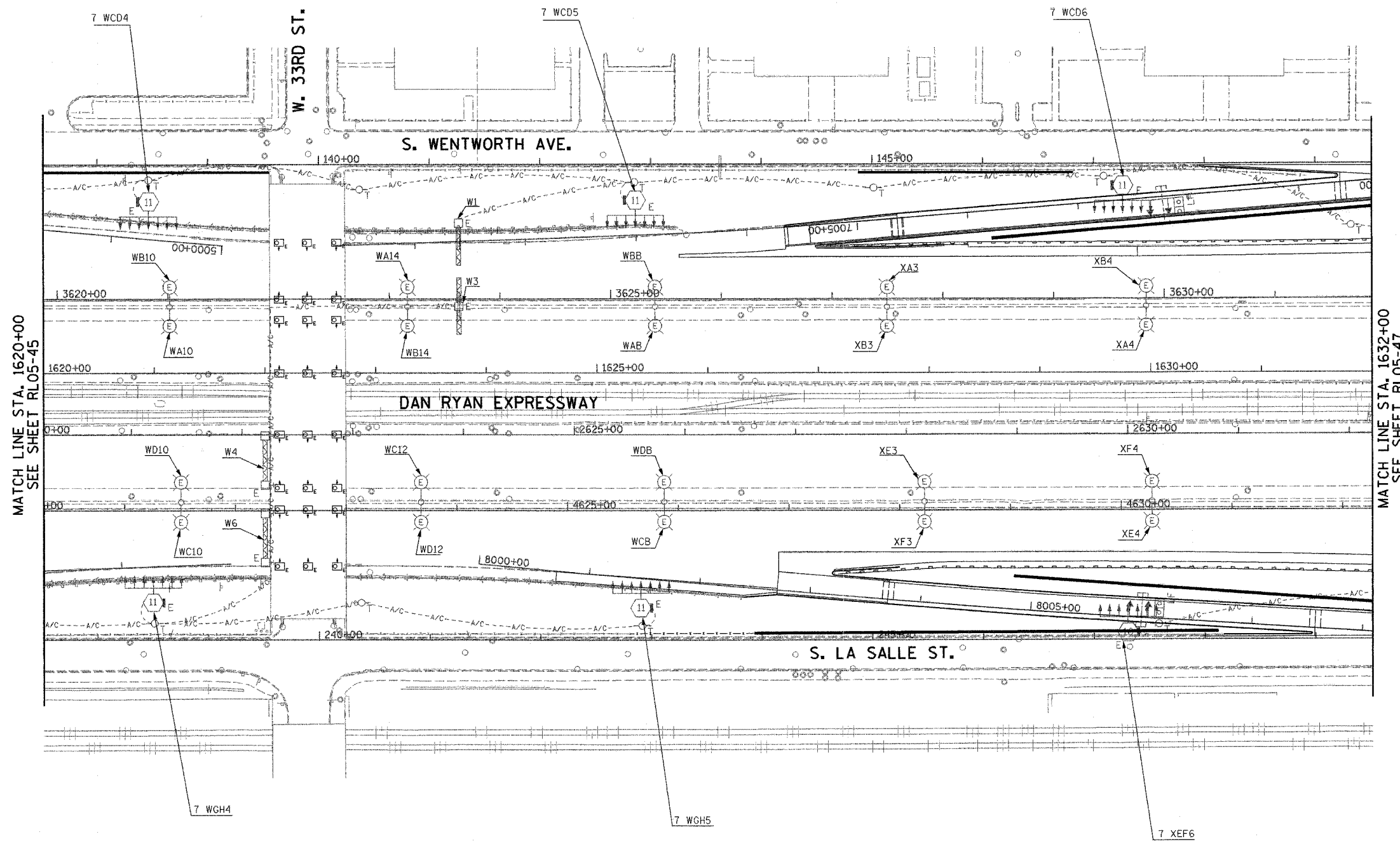


F.A.I. RTE.	SECTION	COUNTY	TOTAL SHEETS	SHEET NO.
94/90	2003-0311	COOK	976	157
STA. 1620+00		TO STA. 1632+00		
FED. ROAD DIST. NO.	ILLINOIS	FED. AID PROJECT		
62583				



NOTE:  
 1. SEE DRAWINGS ME-01 AND ME-02 FOR ELECTRICAL SYMBOLS AND ABBREVIATIONS.

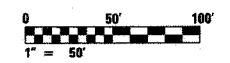


MATCH LINE STA. 1620+00  
SEE SHEET RL05-45

MATCH LINE STA. 1632+00  
SEE SHEET RL05-47

RL05-46

**KAM ENGINEERING, INC.**  
 CONSULTING ENGINEERS  
 707A Davis Road, Suite 205  
 Elgin, Illinois 60123-1369



REVISIONS	
NAME	DATE

ILLINOIS DEPARTMENT OF TRANSPORTATION  
 F.A.I. 94/90 (DAN RYAN EXPRESSWAY)  
 31st STREET TO I-57

**ROADWAY LIGHTING PLANS  
 PROPOSED IMPROVEMENTS 2005**

SCALE: 1"=50'  
 DATE: OCTOBER 29, 2004  
 DRAWN BY: BL  
 CHECKED BY: SM

07/15/2004 11:59:39 AM C:\p03\proj\2003-0311\Lighting\RL05-46.dwg