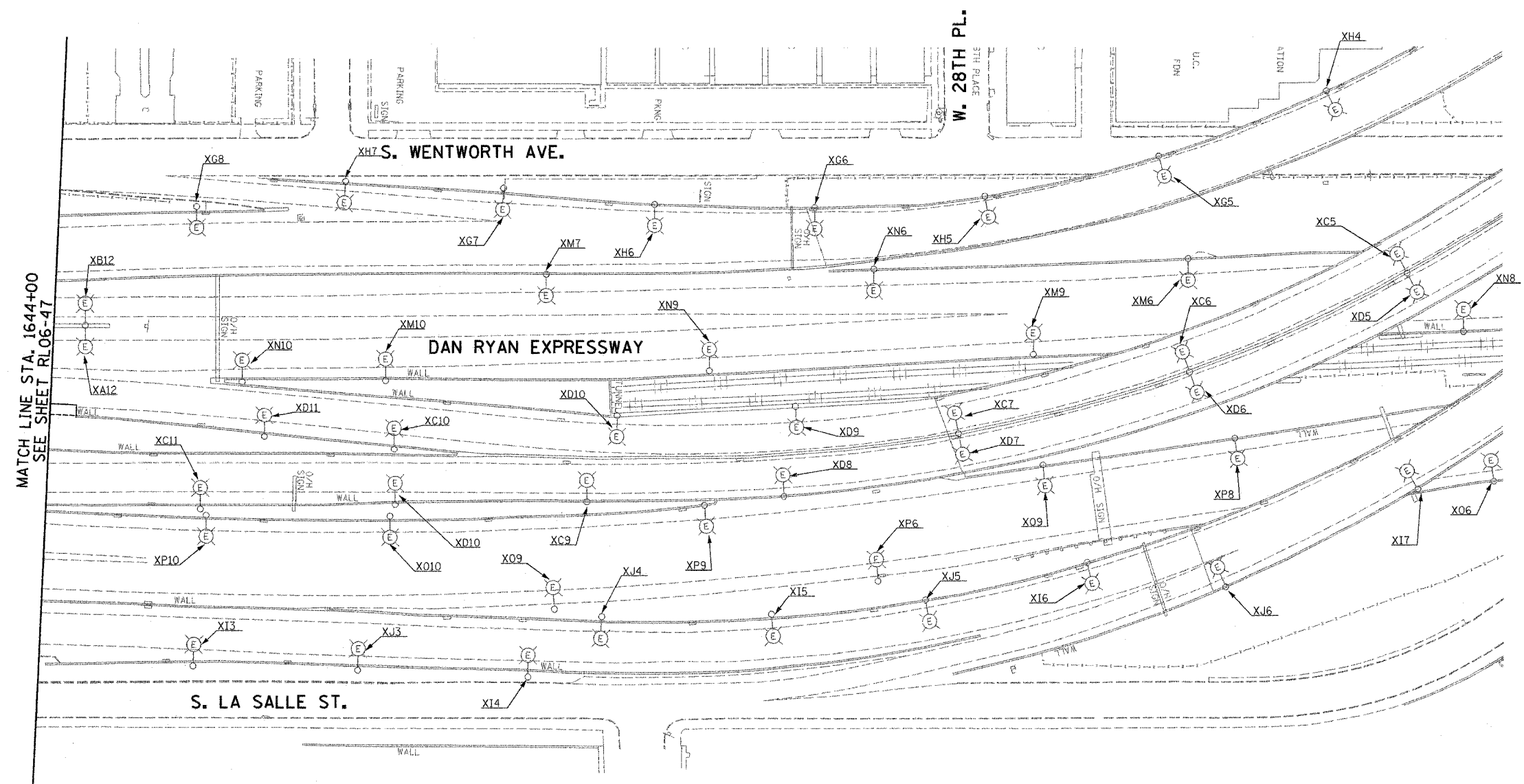


F.A.I. RTE.	SECTION	COUNTY	TOTAL SHEETS	SHEET NO.
94/90	2003-031I	COOK	976	209
STA. 1644+00	TO STA.			
FED. ROAD DIST. NO.	ILLINOIS	FED. AID PROJECT		
62583				



**NOTES:**  
SEE DRAWINGS ME-01 AND ME-02 FOR ELECTRICAL SYMBOLS AND ABBREVIATIONS.



MATCH LINE STA. 1644+00  
SEE SHEET RL06-47

RL06-48

**K&E** KAM ENGINEERING, INC.  
CONSULTING ENGINEERS  
707A Davis Road, Suite 205  
Elgin, Illinois 60123-1369



REVISIONS	
NAME	DATE

ILLINOIS DEPARTMENT OF TRANSPORTATION  
F.A.I. 94/90 (DAN RYAN EXPRESSWAY)  
31st STREET TO I-57

**ROADWAY LIGHTING PLANS  
PROPOSED IMPROVEMENTS 2006**

SCALE: 1"=50'  
DATE: OCTOBER 29, 2004  
DRAWN BY: BL  
CHECKED BY: SM

02/06/03 PM  
10/15/2004