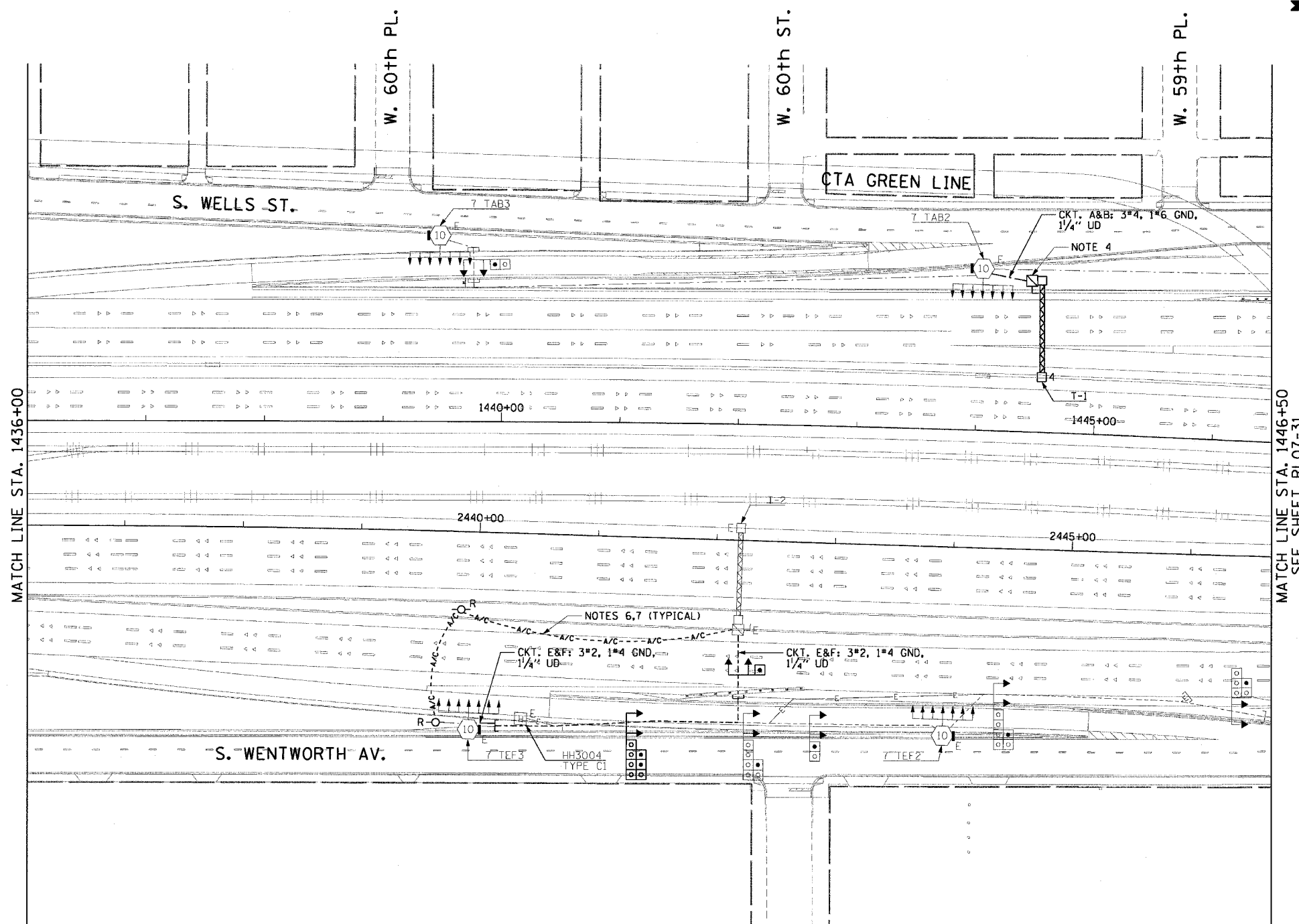


F.A.I. RTE.	SECTION	COUNTY	TOTAL SHEETS	SHEET NO.
90/94	2003-0311	COOK	976	238
STA. 1436+00.00		TO STA. 1446+50.00		
FED. ROAD DIST. NO. 1		ILLINOIS FED. AID PROJECT		

62583

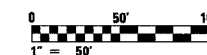
NOTES:

- SEE DRAWINGS ME-01 AND ME-02 FOR ELECTRICAL SYMBOLS AND ABBREVIATIONS.
- COORDINATE ALL WORK WITH IDOT CONTRACT NOS. 62301 AND 62303.
- UNLESS NOTED OTHERWISE, ALL ITEMS AND WORK SHOWN IN HEAVY LINE WEIGHT ON THIS DRAWING ARE PROPOSED ITEMS AND WORK.
- SEE IDOT STANDARD DRAWINGS FOR ELECTRIC CONNECTION TO SIGN STRUCTURE DETAILS.
- ALL CONCRETE ENCASED DUCTBANKS SHOWN ON THIS DRAWING WILL BE INSTALLED BY OTHERS IN A SEPARATE CONTRACT, AND WILL BE CONSIDERED AN EXISTING CONDITION FOR THIS CONTRACT.
- EXISTING TEMPORARY AERIAL CABLES TO BE REMOVED WILL BE INCLUDED FOR PAYMENT WITH THE "WOODEN POLE REMOVAL" PAY ITEM. ABANDON ANY EXISTING CONDUIT UTILIZED FOR THE TEMPORARY FEED IN PLACE.
- THE TEMPORARY POWER FEED TO THE SIGN STRUCTURE MUST REMAIN IN SERVICE UNTIL THE PERMANENT POWER FEED IS INSTALLED, TESTED, AND ACCEPTED BY THE ENGINEER.
- THE FINAL INSTALLATION LOCATIONS OF THE LIGHTING RACEWAYS MUST BE COORDINATED WITH THE RACEWAYS SHOWN ON THE SURVEILLANCE PLANS.



MATCH LINE STA. 1436+00

MATCH LINE STA. 1446+50
SEE SHEET RL07-31



RL07-30

CTE ENGINEERS
 CONSOER TOWNSEND ENVIRONMENTAL ENGINEERS, INC.
 303 EAST WACKER DRIVE, SUITE 600
 CHICAGO, ILLINOIS 60601-5202, PHONE: (312) 938-0300

REVISIONS	
NAME	DATE

ILLINOIS DEPARTMENT OF TRANSPORTATION
 F.A.I. 90/94 (DAN RYAN EXPRESSWAY)
 31st STREET TO I-57
 ROADWAY LIGHTING PLANS
 PROPOSED IMPROVEMENTS 2007

SCALE: 1"=50' DRAWN BY: CJM
 DATE: October 29, 2004 CHECKED BY: WDS

11/19/2004 04:59:11 PM