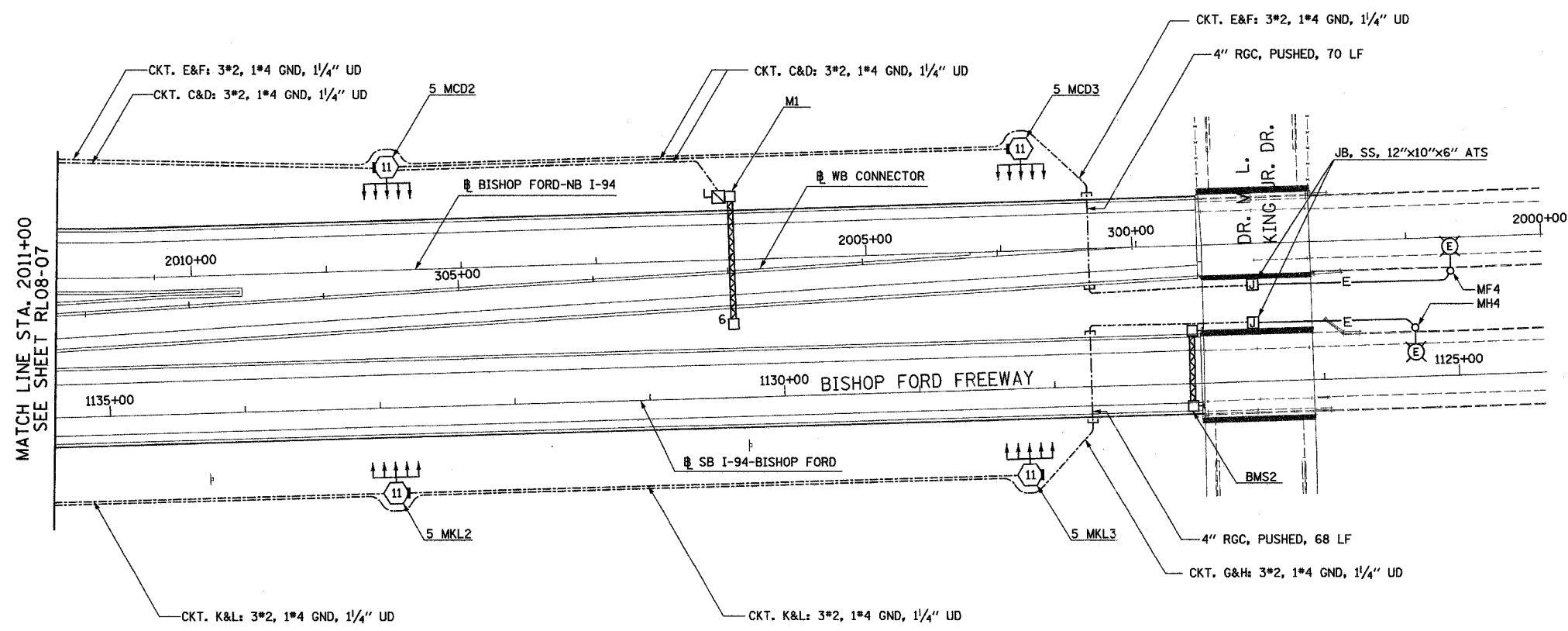


F.A.I. RTE.	SECTION	COUNTY	TOTAL SHEETS	SHEET NO.
90/94	2003-03II	COOK	976	264
STA. 2011+00	TO STA. 2000+00			
FED. ROAD DIST. NO.	ILLINOIS	FED. AID PROJECT		

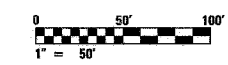
62583



- NOTES:
- SEE DRAWINGS ME-01 AND ME-02 FOR ELECTRICAL SYMBOLS AND ABBREVIATIONS.



MATCH LINE STA. 2011+00  
SEE SHEET RL08-07



RL08-08

**SINGH** 300 W. ADAMS ST.  
CHICAGO, IL 60606  
SINGH & ASSOCIATES, INC. TEL: (312) 629-0240  
CONSULTING ENGINEERS FAX: (312) 629-8449

REVISIONS	
NAME	DATE

ILLINOIS DEPARTMENT OF TRANSPORTATION  
F.A.I. 90/94 (DAN RYAN EXPRESSWAY)  
31st STREET TO I-57  
  
ROADWAY LIGHTING PLANS  
PROPOSED IMPROVEMENTS 2008  
  
SCALE: 1"=50'  
DATE: OCTOBER 29, 2004  
DRAWN BY: VG  
CHECKED BY: TM

3:3905 FM  
10/14/2004